

THE O'DAY 39



O'DAY 39

**EUROPEAN DESIGN.
AMERICAN
CONSTRUCTION.
WORLDLY COMFORTS.**

One look tells you that there has never before been an O'Day like the O'Day 39.

The hull design and deck layout are unmistakably European, with a low, sleek trunk cabin rising from the foredeck; wide, unclut-

tered, cambered decks for easy mobility when the boat is heeled; and a tall, double spreader masthead sloop rig.

The powerful, low wetted surface hull provides a long waterline and wide beam, making the O'Day 39 a very large boat for under 40 feet. The origins of the boat are French: brilliant young French Naval Architect Phillippe



Highly maneuverable in close quarters

Briand's Sun Fizz design for O'Day's sister company: Jeanneau, Europe's

Very spacious main salon with many handholds



largest boatbuilder. More than 300 of the Sun Fizz have been sold since introduction in 1980.

The O'Day 39 is an adult or family boat. Three separate, private double cabins provide tranquility for intimate pursuits. The cabins are located apart from each other, with a second head and shower available as an option in one aft cabin. The dinette table easily serves six, the navigator's table handles full-size charts without folding to postage stamp size, and the galley works well at anchor or in a seaway offshore.

A high performance hull combined with an easily-managed sailplan.

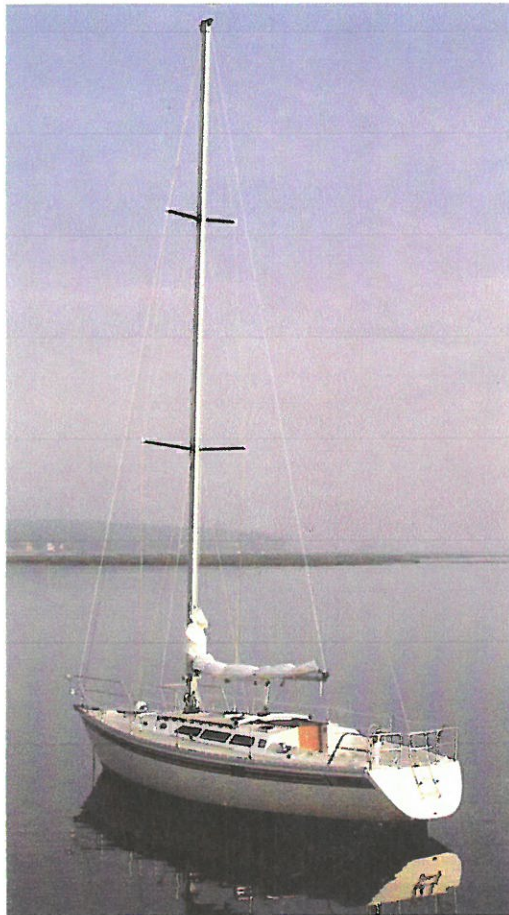
The O'Day 39 hull is a development of fin-keel, spade rudder design evolving into the 1980's. By reducing wetted surface, extending the waterline and building the boat to medium displacement standards, the boat is easily driven in all but ghosting conditions with a 681 sq. ft. sailplan, featuring a moderate foretriangle. This means that headsails are smaller, lighter and more easily handled. The mainsail can be quickly shortened through slab



Mid-boom sheet and traveler, optional opening port in hull

reefing. The reef lines run inside the boom and are secured by line stoppers at the inboard end of the boom.

The standard hardware and equipment found on the O'Day 39



Double spreader rig, powerful hull

also serves to make sailhandling easier for a family or even a couple with a little sailing experience: a 30" Edson steering system is standard; Barlow sheet winches are correctly angled on recessed bases molded into the deck and coaming; Barlow main and jib halyard winches are mast-mounted while the mainsheet – which is led through an adjustable cabin top traveler – runs to the forward end of the cockpit and a Barlow winch. And, all winches are two

speed. Add the optional self-tailing winch packages and the O'Day 39 is a shorthanded passagemaker.

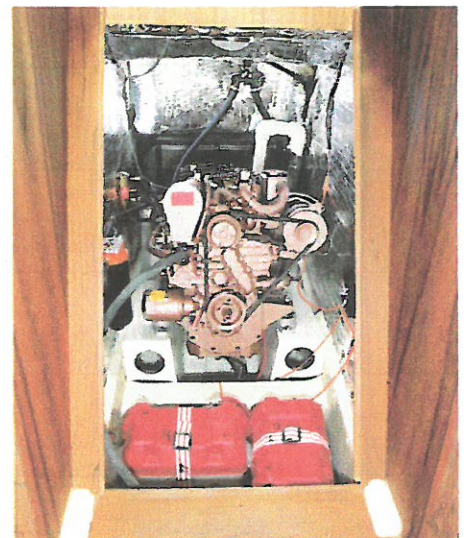
All of this talk of powerful hull, easily-handled foresails and shorthanded passagemaking is true: two

Sun Fizz sloops with modified rig were entered in the two-man trans-atlantic race 1981. They finished in Newport, RI first and third among all production boats entered, and in the top quarter of a fleet that included multihulls and exotic racing machines.

A deck and cockpit that boggle the imagination.

An overhead view of the O'Day 39 shows a wide foredeck for ease of handling sails or ground tackle. There's plenty of room at the mast inside the shrouds for halyard, or reefing work, and an immense 10 ft. long cockpit that's over 6 feet wide! Beneath the cockpit is a lockable locker that will hold a ten person liferaft! Cockpit seats are contoured, while the coamings and deck are canted to provide comfortable seating to weather when the boat is heeling. Decks are two-tone with molded-in non-skid

pattern. Around the entire deck from bow to stern quarter is a slotted aluminum toe rail and aluminum gunwale guard. Each cockpit sail locker is so large that a six footer can stand chest

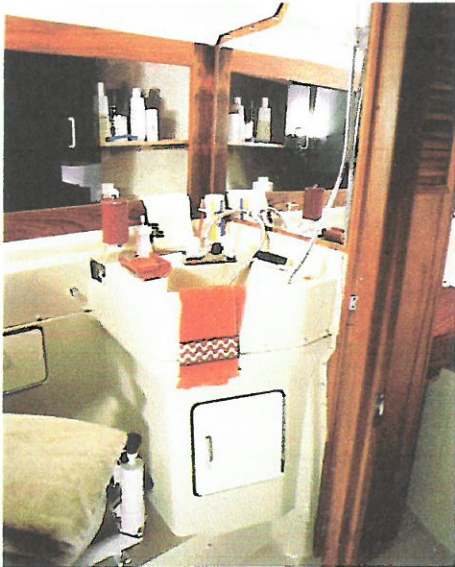


Generous engine access under companionway steps

deep in it. The volume is sufficient to carry five headsails and assorted sheets, guys, buckets, safety gear and more!

The O'Day 39 is nothing short of huge below.

Including two pilot berths and the dinette settees, the O'Day 39 can sleep ten adult-sized people.



Well-organized head features molded vanity and basin

With three separate cabins, three couples can enjoy everything that a sailing vacation should offer, but sometimes doesn't.

Owners will be torn deciding which of the three cabins to claim for themselves. Forward is the extra wide "V" berth over 6'3" long. It has its own bureau and cabinets, and its own separate door to the head. Aft, the two double berths are mirror images of each other. The port aft cabin also has its own storage locker and a seat for use while shaving, putting on make-up, etc. To starboard, a second head with vanity, shower and linen storage is optional; or, order the standard version with more locker space. There is additional storage in a large hanging locker forward of the dinette, under and behind the settees, and in drawers beneath the navigator's seat and table.



Visibility from cockpit to bow is unobstructed

Structural design and integrity as impressive as the rest of the boat.

As well as being easy to sail, incredibly comfortable and spacious, the O'Day 39 is immensely strong. Inside the hull is the backbone of strength: the multi-level unified grid pan and integral rig support system. The pan is a one piece molded part that extends from the bow area to the sail lockers aft. It is the basis for all berths and the cabin sole; and prevents wracking and twisting forces from

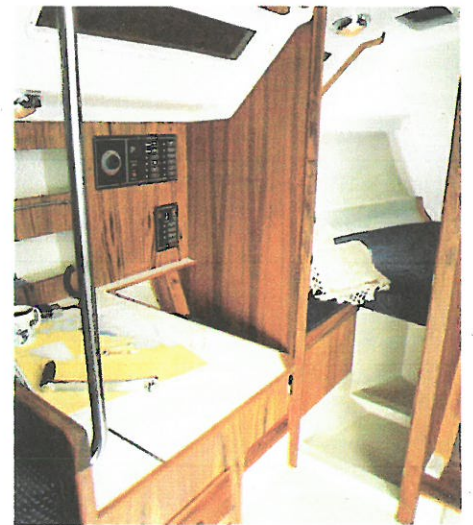


Port aft cabin seat and locker, deep double sinks

affecting the hull and deck, while tying in the bases of the Navtec rod chainplate anchors. It is quite possibly the strongest production sailboat of its size built in the United States.

With so much to offer, the O'Day 39 will change the direction of yacht design. No other boat of this size offers so much at such a reasonable price. The quality of the construction, the comfort, and the sailing sophistication built in throughout the boat are apparent the minute you step aboard. The value is there as well. O'Day Yachts have continued to sell well through the sluggish economy of the early 1980's, proof positive that a new O'Day has dawned since we began building small boats a quarter century ago.

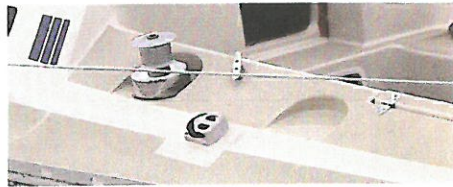
O'Day 39. There's nothing else like it.



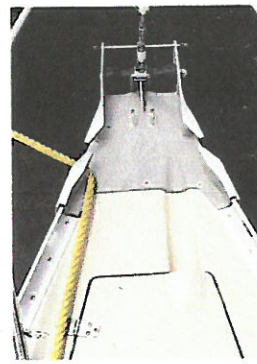
Stainless steel grab rail for additional deck support



Aluminum toe rail and rub rail, double lifelines and double rail pulpits, Edson pedestal steering with guard, two-tone decks all standard.



Self-draining life raft well, keel flares, raft and emergency equipment accessible. May be locked using standard closures.



Winches mount in recessed bases reinforced from below, coamings are angled for comfortable seating when heeled.

Anchor well is lockable, stem casting has integral chocks, double anchor rode rollers with lock pin, two bails for jib tacks.



Two large, deep sail lockers hold 6' oars, sail bags, life jackets; a six-foot man stands chest-deep. Aft seat locker is storage for optional propane.

All boats built by Bangor Punta Marine are constantly being reviewed and improved. As a result, standard equipment and options are subject to change at any time. See your dealer for the latest specifications.

O'DAY 39 STANDARD FEATURES

HULL AND DECK

- Hand laminated fiberglass hull.
- Hand laminated fiberglass deck with plywood and balsa core.
- Below water thru-hull fittings are bronze with brass ball valve seacocks.
- External, epoxy coated, cast-iron keel.
- Hull/deck connection is bolted and fiberglassed.
- Extruded aluminum toe rail with cast stanchion sockets; stainless steel 24" stanchions with double lifelines.
- Back-up plates on cleats, pulpits, and stanchions.
- Double rail bow and stern pulpits.
- Sternhead fitting is cast aluminum, with double anchor rollers.
- Translucent hatch on foredeck, over main cabin, and over head.
- Barlow #27 2 speed chrome primary winches with cleats.
- Barlow #19 2 speed chrome main-sheet winch with cleat.
- Genoa gear with tracks.
- Mainsheet traveler on cabin top.
- Pedestal steering.
- Life raft well in cockpit with drain.
- Translucent sliding companionway hatch with molded seahood, and solid teak vented penboards.
- 6 opening ports.
- Anchor locker in foredeck with lockable retainer.
- Two-tone deck colors molded in.
- Curved helmsman seat open to molded lazarette bin.
- Teak cabin top grab rails.

SPARS AND RIGGING

- Isomat mast and boom; double spreader; double lower shroud. Keel stepped rig.
- Internal main and jib halyards; wire with spliced rope tails.
- Barlow #19 two-speed chrome main halyard winch.
- Barlow #23 two-speed jib halyard winch.
- Mainsail with flattening reef and two shortening reefs; working jib.
- Masthead light; bow light; foredeck light.
- Reef and 3:1 outhaul internal in boom.

INTERIOR

- Teak bulkheads.
- V-berth with fabric covered 5" foam cushion.
- Marine head with 15 gallon holding tank and deck discharge.
- Molded head vanity.
- Large Plexiglas head mirror.
- Pressure hot and cold water.
- 110V shore power.
- Shower sump pump.

- Teak grate on sole.
- 2 pilot berths with cushioned lee-boards.
- Contoured cushion backrest. Removable for access to storage. 5" tufted fabric covered settee cushions.
- Teak overhead hand rails in main cabin.
- Double drop-leaf table on stainless steel leg.
- Curtains on fixed ports.
- Stainless steel double sinks.
- Hinged top over two-burner stove.
- Icebox drain pump.
- 2 stainless steel grab posts.
- Curved cushion nav seat.
- Hull lined with foam-backed fabric in aft cabins.
- V-berth covered with 5" fabric covered cushions.
- 3 hanging lockers.
- Teak companionway ladder with angled steps for secure footing.
- Companionway ladder hinged for access to engine.
- Solid teak plywood penboards with lock.

MECHANICAL, ELECTRICAL AND PLUMBING

- Universal 44 HP, 4 cylinder fresh-water cooled diesel engine.
- 1 1/2" bronze shaft with two-blade propeller.
- 40 gallon aluminum fuel tank with electric gauge.
- Thirteen interior cabin lamps, one chart light, and one engine room lamp.
- Two 95 amp batteries in plastic boxes.
- Complete electrical panel with battery switch, branch line breakers for 12V and 110V system, power-on lights battery volt meter, 110V reverse polarity indicator.
- Number coded 12-volt wiring.
- 50' power cord for 110V dockside power.
- International running lights.
- 110 U.S. gallons fresh water.
- Manual bilge pump with cockpit access.
- Six gallon water heater connected to engine heat exchanger and 110V system.
- Self-priming water pressure pump with in-line filter.
- Lightning ground system. (No lightning ground system provides complete protection.)

O'DAY 39 OPTIONS

- **Boom Vang** - 4:1 purchase boom vang with integral cam cleat for boom and mast. (Shipped uninstalled.)
- **Bow Cowl Vent** - 4" diameter flexible cowl vent with chromed, brass-deck plate.
- **Compass** - Ritchie SP-5 or equivalent mounted in steering pedestal.
- **Cradle** - Heavy wood shipping/storage cradle designed for the O'Day 39.

- **Electric Bilge Pump** - Submersible electric bilge pump mounted in the keel sump. Control switch is on the 12-volt circuit breaker panel.
- **Extra Head, Shower, and Vanity in Starboard Aft Stateroom** - Second head installed in the starboard stateroom in lieu of hanging locker and seat. Head includes mariner toilet connected to 15 gallon seamless plastic holding tank; fold-away teak vanity with molded sink, overboard drain, pressure hot and cold water; mirrored teak locker, shower, toothbrush and glass holder, toilet tissue holder; bifold louvered teak door between head and aft berth.
- **Ice Box** - 8 cu. ft. ice box with 3 1/2" of polyurethane foam insulation; cabinet with 3 drawers installed in lieu of standard chart table. Flat top serves as a chart table.
- **Overboard Discharge Head** - Addition to the standard head installation, which allows the holding tank to be discharged overboard in uncontrolled waters.
- **Mainsail Cover** - Blue zipper cover for mainsail when sail is left on the boom. The cover protects the sail from sun and weather.
- **Opening Ports in Aft Staterooms** - Beckson 5 x 12 opening port installed in hull in lieu of fixed ports in aft staterooms.
- **Salt-Water Pump in Galley** - Manual pump faucet in the galley with thru-hull and shutoff. Delivers sea or lake water to the galley.
- **Stainless Steel Mast Pulpit** - 24" high stainless pulpit around sides and front of mast. Provides secure area for crew working around spar.
- **Alcohol Stove with Oven** - Two-burner stainless steel stove with porcelain-lined oven; three-gallon, alcohol tank with pump (in lieu of standard stove).
- **Propane Stove with Oven** - Two-burner stainless steel stove with porcelain-lined oven; two 4 1/4 pound propane tanks mounted on aft deck; electric, solenoid operated safety valve with switch mounted over the galley (in lieu of standard stove). The L.P.G. system has a heat sensor which shuts the stove off when the cabin temperature reaches 135°F.
- **Translucent Hatch over Aft Staterooms** - Two aluminum frame Plexiglas hatches, one mounted over each aft stateroom for additional light and ventilation.
- **Transom Boarding Ladder** - Stainless steel swim/boarding ladder installed on transom. Folds up into stern rail when not in use.
- **Barlow Winch Handle** - 10" chromed bronze, single-grip winch handle (1 supplied with standard boat).
- **Winches - Self-Tailing** - Two #27ST in lieu of standard #27 (primary)
One #24ST in lieu of standard #19 (mainsheet).

Specifications shown in this catalog (standards, options, etc.) are subject to change without notice. Some photos may show optional or special equipment and accessories used as photographic props. Bangor Punta Marine builds O'Day boats from 14' to 39' in three distinct lines: Daysailers and Weekenders (Javelin, O'Day 15, O'Day Day Sailer, and O'Day 19); Trailerable Cruisers (the O'Day 22, 23, and 25); Yachts (the O'Day 28, 30, 34, 37 and 39).

Free brochures are available on each of these three lines from dealers or from Bangor Punta Marine. Full-size architectural drawings are available directly from Bangor Punta Marine on Cruisers and Yachts (the 22 through 39) at a cost of \$5 per set per boat.

O'Day Boats are built by



A Division of Bangor Punta Corporation
P.O. Box 991, Fall River, MA 02722

Cat. No. 982-4
© Copyright 1982 Bangor Punta Marine

Printed in U.S.A.