



MARLOW-HUNTER, LLC

Operator's Manual

MH37



Thank You!
From the Marlow-Hunter Team

Dear Marlow-Hunter Owner,

Congratulations and welcome to the Marlow family! As a Marlow-Hunter owner, you will enjoy the quality and the attention to detail for which Marlow boats are renowned. The Marlow organization and your dealer are committed to your service and total satisfaction.

This Operator's Manual will acquaint you with the proper operation and maintenance of your new Marlow-Hunter, whether in port or at sea, with a heavy emphasis on boating safety, our primary concern.

The new boat Warranty Registration Form you signed at the time of delivery will be sent to us by your dealer. This registration begins the two year warranty and establishes your contact information in our system.

As you already know, we work with the highest quality equipment manufacturers to supply various components installed on your boat. To receive full warranty coverage on all the individual components, such as engines, electronics and appliances, be sure to also complete their registration process. Most, if not all, manufacturers provide online registration. As an alternative, complete and return the respective manufacturer's warranty cards included in your digital or hard copy owner's manual packet. Please remember all the information contained in the OEM (Original Equipment Manufacturer) manuals supersedes the information contained in this manual.

Finally, if you are new to boating, be certain to learn the proper rules of seamanship to ensure the safety of your passengers. We recommend reading books such as Chapman's Piloting, Seamanship and Small-Boat Seamanship Manual for useful information concerning this aspect of boating. Attend a safe boating course offered by the United States Coast Guard Auxiliary, United States Power Squadron, or any enterprise experienced in conducting safe boating courses.

Thank you for choosing Marlow-Hunter. We are confident your new boat will provide you and your family with years of enjoyable boating.

*The Marlow-Hunter Team,
Marlow-Hunter, LLC*

Welcome to the Marlow-Hunter Family

A Proud Heritage / A Strong Future

Marlow-Hunter carries on from one of America's oldest privately held boating companies. In August 2012, Hunter Marine Corporation became Marlow-Hunter, LLC and is continuing the great tradition started almost 40 years ago. David Marlow, owner and founder of Marlow Yachts, has stepped into executive leadership for the Hunter line of sailboats and the reintroduction of the Mainship line of cruisers. As a result, Marlow-Hunter benefits both from decades of his personal experience, common sense, drive for excellence, understanding of the customer and love for all things boating as well as decades of craftsmanship, innovation and dedication of an existing production team. We are excited about the future and the opportunity to continue the heritage of Hunter and to produce each new boat better than the last.

Your New Hunter

Your new Hunter 37 stands alone in its class. Nothing compares to its elegance, comfort, convenience and ease of handling. Conceptually, we have taken the required and desired from the past and melded it with tomorrow and sprinkled the whole with style. Specifically, our design, engineering, manufacturing and service teams are united in pride to provide you the rich pleasure of Hunter ownership. Every feature, every piece of equipment and its placement has been engineered to provide you the best advantage on the water. Your Hunter 37 is a gem.

How to Use this Manual

We suggest initially reading your operator's manual from beginning to end when you first receive your new boat. By doing this, you will gain a quick overall perspective of your boat's features and controls as well as a basis for locating more detailed and specific information. This manual weaves together words, drawings and pictures to convey the clearest understanding of the components of your new Marlow-Hunter.

Table of Contents & Glossary

For quick reference, a table of contents is located in the beginning of this manual and references specific page numbers for the concepts, instructions and reference material. Also, a glossary is located in the final portion of this manual to clarify any unfamiliar terms.

Safety Warnings and Symbols

Your safety is our highest priority. Please carefully read the Boating Safety chapter in this manual. In it, you will find an explanation of the caution, warning, and danger symbols used throughout the manual. These symbols highlight situations that are potentially harmful and provide helpful information for safe boating.

For questions regarding your Hunter or this manual, contact Customer Service at:

Marlow-Hunter, LLC
Route 441, Post Office Box 1030
Alachua, FL, USA 32616
Phone: (386) 462-3077
Fax: (386) 462-4077
e-mail: aftersales@marlow-hunter.com
(8am to 5pm EST) 1-800-771-5556

Operator's Manual Chapters

- 
- 1. Introduction**
 - 2. Documents and Forms**
 - 3. Warranty**
 - 4. Boating Safety**
 - 5. Fuel System**
 - 6. Underwater Gear**
 - 7. DC Electric Systems**
 - 8. AC Electric Systems**
 - 9. Water Systems**
 - 10. Sanitation and Waste Systems**
 - 11. Engines and Transmissions**
 - 12. Sails & Rigging**
 - 13. Getting Underway**
 - 14. Maintenance**
 - 15. Glossary**

How do I prevent Carbon Monoxide Buildup? Pg. 4.4

What do I do in case of a fire? Pg. 4.11

How do I fuel my boat? Pg. 5.3

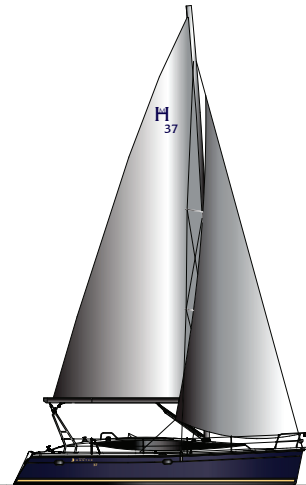
How do I remove my battery? Pg. 7.3

How do I connect shore power? Pg. 8.2

How do I disconnect the shore power? Pg. 8.2

How do I start my generator power? Pg. 8.5

How do I shut down my generator? Pg. 8.5



FAQ Quick Reference Guide

How do I operate my air conditioner? Pg. 8.5

How do I fill my fresh water tank? Pg. 9.1

How do I sanitize my water? Pg. 9.2

How do my bilge pumps work? Pg. 10.2

How do I rig my boat? Pg. 12.6

How do I install my mainsail? Pg. 12.8

How do I reef my sails? Pg. 12.9

How do I start my engines? Pg. 13.3

How do I fix scratches? Pg. 14.2

What periodic maintenance should I perform? Pg. 14.8

How do I lift and store my boat? Pg. 14.9

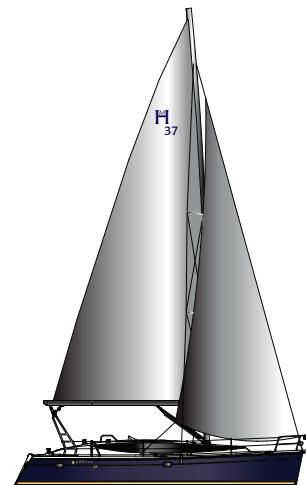


TABLE OF CONTENTS

Section	Description	Page
---------	-------------	------

1.	Introduction	
1.1	The Manual Packet	1.1
1.2	Owner/Operator Responsibilities	1.1
1.3	Dealer's Responsibilities	1.2
1.4	Additional Sources of Information	1.2
1.5	Original Equipment Manufacturers' (OEM) Manuals	1.3
1.6	Warranties	1.3
1.7	Hull Identification Number (HIN)	1.3
1.8	Manufacturer's Certifications	1.3
1.9	Service Parts and Repair	1.4

2.	Documents and Forms	
2.1	Pre-Delivery Service Record	2.1
2.2	Vessel Information Form	2.1
2.3	Preliminary Care and Maintenance Checklist	2.1
2.4	Float Plan	2.1
2.5	USCG Recreational Boating Accident Report	2.2
2.6	Vessel Inventory Forms	2.2
2.7	Miscellaneous Forms	2.2
	Pre-Delivery Service Record Document	2.3
	Vessel Information Document	2.4
	Preliminary Care and Maintenance Checklist Document	2.5
	Float Plan Document	2.11
	USCG Recreational Boating Accident Report Document	2.12
	Vessel Inventory Documents	2.18
	Miscellaneous Forms Documents	2.22

3.	Limited Warranty	
	Phase One of the Limited Two-Year Warranty	3.4

Section	Description	Page
---------	-------------	------

	Phase Two of the Limited Two-Year Warranty	3.4
	Limited Five-Year Hull Structure and Bottom Blister Warranty	3.5
	Restrictions Applicable to Warranties	3.6
	Warranty Registration	3.7
	Transfer of Limited Warranties	3.7
	Owner Information Card Document	3.8
	Warranty Registration Form	3.9
	Acknowledgement of Transfer of Ownership Sample Document	3.10
	Graphical Explanation of Warranty Coverage	3.11

4.	Boating Safety	
4.1	Hazard Alerts	4.1
4.2	General Safety Issues	4.1
4.3	Carbon Monoxide Hazard	4.3
4.4	Other Potential Hazards	4.9
4.5	Fire	4.11
4.6	Distress Signals	4.12
	Lightning Storm Warning	4.15
	Specifications	4.16
	Standard Features	4.17
	Exterior Description Illustration	4.18
	Interior Arrangement Illustration	4.19
	Deck Hardware Layout Illustration	4.20
	Deck Hardware List	4.21
	Available Standard Options	4.22

5.	Fuel Systems	
5.1	Fuel Tank	5.1
5.2	Fuel Supply Lines and Hoses	5.2
5.3	Fuel Valves	5.2
5.4	Fuel Filters	5.3
5.5	Fueling Your Boat	5.3

TABLE OF CONTENTS

Section	Description	Page
5.6	LPG System	5.4
	Troubleshooting	5.8
	Fuel Safety Checklist for Boarding	5.9
	Fuel System Layout	5.10
	LPG System Layout	5.11

6.	Underwater Gear	
6.1	Mechanical Propulsion Components	6.1
6.2	Steering Components	6.3
6.3	Intakes and Discharges	6.5
6.4	Monitoring Equipment	6.6
6.5	Anchoring and Windlass	6.6
6.6	Keel	6.7
	Troubleshooting	6.8
	Intakes/Discharges Below Waterline Illustration	6.9
	Thru-Hulls Above Waterline - Starboard Side Illustration	6.10
	Thru-Hulls Above Waterline - Port Side Illustration	6.10

7.	DC Electric Systems	
7.1	DC Power System and Component Overview	7.1
7.2	DC Power Supply and Control Components	7.2
7.3	DC System Components and Operation	7.7
7.4	Other DC System Components	7.13
7.5	General Maintenance	7.14
	Troubleshooting	7.15
	DC System Major Component General Layout Illustration	7.16
	Interior/Exterior Lighting Layout Illustration	7.17
	DC Outlet Layout Illustration	7.18

Section	Description	Page
---------	-------------	------

8.	AC Electric Systems	
8.1	AC Power System Overview	8.1
8.2	AC Power Supply Equipment and Components	8.1
8.3	AC System Components and Operation	8.8
	Troubleshooting	8.11
	AC System Major Component General Layout Illustration	8.12
	AC Outlet Layout Illustration	8.13
	Optional Air Conditioning Ducting Layout Illustration	8.14

9.	Water Systems	
9.1	Fresh Water Tanks and Fills	9.1
9.2	Pumps	9.2
9.3	Pick-ups, Valves and Strainers	9.3
9.4	Water Heater	9.5
	Troubleshooting	9.7
	Fresh Water System Layout Illustration	9.8
	Option Air Conditioning Plumbing Layout Illustration	9.9
	Optional Generator Plumbing Layout Illustration	9.10
	Manual Toilet Raw Water Layout & Heat Exchanger Layout Illustration	9.11

10.	Waste System	
10.1	Drains and Discharges	10.1
10.2	Pumps	10.2
10.3	Engine and Generator Waste	10.4
10.4	Head System	10.5
10.5	Holding Tank	10.6
10.6	Blower	10.7

TABLE OF CONTENTS

Section	Description	Page
	Troubleshooting	10.8
	Bilge/Sump Pump & Drain System Layout Illustration	10.9
	Air Conditioning Waste Water Layout Illustration	10.10
	Engine & Optional Generator Exhaust System Layout	10.11
	Black Water Plumbing Layout Illustration	10.12
	Engine Compartment Blower Layout Illustration	10.12

11.	Engines and Transmissions	
11.1	Engine and Transmission	11.1
11.2	Engine Fluids	11.5
11.3	Engine Operations	11.5
11.4	Engine Exhaust	11.7
11.5	Maintenance	11.7
	Troubleshooting	11.8

12.	Sails and Rigging	
12.1	Mast	12.1
12.2	Standing Rigging	12.2
12.3	Boom	12.2
12.4	Mainsail	12.2
12.5	Headsails	12.2
12.6	Running Rigging	12.3
12.7	Rigging the Boat	12.6
12.8	Sail Reefing & Stowing	12.9
12.9	Supporting Hardware	12.12
	General Rig Components	12.14
	Mainsail / Jib Specifications Illustration	12.15

Section	Description	Page
	Standing Rigging Specifications Illustration & Table	12.16
	Standing Rigging Layout Illustration	12.17
	Running Rigging Specifications Table	12.18
	Running Rigging Lines From Mast Step - Standard Rig Illustration	12.19
	Running Rigging Lines From Mast Step - Furling Rig Illustration	12.19
	Mainsheet & Boom Outhaul Layout Illustration	12.20
	Traveler Lines Layout (With Mainsheet) Illustration	12.21
	Vang Layout (Conventional & Solid) Illustration	12.22
	Furling Jib Layout Illustration	12.23
	Optional Spinnaker Layout Illustration	12.24
	Generalized Reefing Layout Illustration	12.25
	Lazy Jack Layout Illustration	12.26
	Stack-Pack Sail Cover Installation Illustration	12.27

13.	Getting Underway	
13.1	Before Boarding	13.1
13.2	Boarding Your Boat	13.1
13.3	Starting the Engines	13.2
13.4	Getting Underway	13.3
13.5	Returning to Port	13.5
13.6	Emergency Operations	13.5

14.	Maintenance	
14.1	Tools / Parts / Materials	14.1
14.2	Exterior	14.1
14.3	Interior	14.5

Operator's Manual

14.4	Mechanical Systems and Components	14.7
14.5	Periodic Maintenance	14.8
14.6	Storage and Lifting	14.9
14.7	Fitting Out After Storage	14.11
	Routine Maintenance	14.13
	Sling Locations Illustration	14.15

15.	Glossary	15.1
-----	----------	------



MARLOW-HUNTER, LLC

Chapter 1

Introduction

MH37



This Page Intentionally Left Blank

To convey a basic introduction to your boat, this chapter is organized into the following sections:

1. The Manual Packet
2. Owner/Operator Responsibilities
3. Dealer's Responsibilities
4. Additional Sources of Information
5. Original Equipment Manufacturers' (OEM) Manuals
6. Hull Identification Number
7. Manufacturer's Certifications
8. Service, Parts and Repair

1.1 The Manual Packet

This Operator's Manual, along with the OEM (Original Equipment Manufacturers) manuals, is provided to assist you in operating your boat and using its various systems and equipment safely. It provides:

- Basic safety information
- Descriptions of many of your boat's features
- Explanations of the equipment on your boat
- The fundamentals on the use of that equipment
- The fundamentals on the use of your boat.

This Operator's Manual provides various drawings and technical documentation to assist in locating your boat's devices and equipment. **However, please note that while every effort is made to maintain consistency between these technical references and production, efforts to improve the vessel designs may date some of the information found herein.**

The information found in this Operator's Manual may only summarize more detailed information found elsewhere in the OEM manuals. These summaries are intended to be a convenient reference for daily use. OEM manuals take precedence over the information found in this Operator's Manual.

This manual is not intended to provide a course in boating safety, navigation, anchoring or docking your boat. Generally speaking, operating a boat requires more skill, knowledge and awareness than what is necessary to operate a car or truck. Consequently, responsible boat operators should pursue all avenues necessary to become knowledgeable and experienced in all facets of boat ownership and operational safety.

1.2 Owner/Operator Responsibilities

Whether in digital or hard copy format, please keep this manual in a dry, secure and readily accessible location on your boat at all times! Transfer it to the new owner if you decide to sell the boat.

Whether this is your first boat or an unfamiliar model, please insure that you obtain handling and operating experience before assuming command. For your safety and the safety of your passengers, you must:

- Take a course in Boating Safety;
- Get instruction or aid in the safe and proper handling of your boat;
- Familiarize yourself and your passengers of the locations and use of all safety and essential operating equipment.
- Understand and follow the rules of the waterways.
- Learn how to navigate a boat in all sea and weather conditions;
- Register your boat. Contact state boating authorities or your dealer for registration requirements.

Boating Safety courses provide owners and operators with the opportunity to gain knowledge and experience in a variety of skills:

- Navigation
- Seamanship and boat handling
- Rules of the Waterway
- Knowledge of federal, state, and local regulations
- Weather prediction
- Safety at sea
- Survival in bad weather
- Respect for others on the water
- First aid
- Radio communication
- Distress signals
- Rendering assistance to others
- Use of lifesaving equipment
- Pollution control
- Knowledge of the boat and its systems
- Seaworthiness
- Leaving or approaching a dock mooring
- Anchoring and weighing anchor
- Beaching/shallow water operations

Introduction

- Towing/being towed
- Handling mooring lines and tying up
- Procedures for emergencies including fire, flooding, collision, medical emergencies, etc.

Be aware, even though your boat is categorized properly, the sea and wind conditions corresponding to the design categories A, B, or C (as set by the Recreational Craft Directive) (see Fig. 1.1) can range from strong gale to severe conditions where only a competent, fit and trained crew handling a well maintained boat can safely operate.

DESIGN CATEGORIES

Sea and wind conditions for which a boat is assessed by the International Standard to be suitable, provided the craft is correctly handled in the sense of good seamanship and operated at a speed appropriate to the prevailing sea state.

Design Category A ("ocean")

Category of boats considered suitable to operate in seas with significant wave heights above 4 m and wind speeds in excess of Beaufort Force 8, but excluding abnormal conditions, e.g. hurricanes.

Design Category B ("coastal")

Category of boats considered suitable to operate in seas with significant wave heights up to 4 m and winds of Beaufort Force 8 or less

Design Category C ("inshore")

Category of boats considered suitable to operate in seas with significant wave heights up to 2 m and a typical steady wind force of Beaufort Force 6 or less.

Design Category D ("sheltered waters")

Category of boats considered suitable to operate in waters with significant wave heights up to and including 0,30 m with occasional waves of 0,5 m height, for example from passing vessels, and a typical steady wind force of Beaufort 4 or less.

REF: EN ISO 12217

Figure 1.1

Finally, we welcome your comments or suggestions concerning this manual. Did you find the information helpful? Was the information delivered in a clear and precise manner? Was the information thorough enough to help you with your new boat? Please contact Customer Service at aftersales@marlow-hunter.com if you have any questions or comments.

1.3 Dealer's Responsibilities

In addition to conducting a pre-delivery check and service of your boat, your dealer should provide:

1. A description and demonstration of the safety systems, features, instruments, and controls of your boat;
2. An orientation in the general operation and mechanical systems of your boat;
3. A copy of the Product Delivery Service Record form completed by you and the dealer during your inspection of the boat;
4. A review of all warranty information and how to obtain warranty service;
5. A complete set of owner's manuals (digital or hard copy).

If you do not receive these materials, forms, or information, or you have any questions, contact your dealer or Marlow-Hunter at www.marlow-hunter.com.

1.4 Additional Sources of Information

In North America, contact one of the following for information on boating courses:

- U.S. Coast Guard Auxiliary
- U.S. Power Squadron
- Canadian Power and Sail Squadrons
- Red Cross
- State Boating Offices
- Yacht Clubs

Introduction

- Boat U.S. Foundation

Outside of North America, contact your dealer, or your government boating agency for assistance.

Marlow-Hunter is pleased to supply you with; and strongly recommends that you read the following:

Piloting and Seamanship
(Chapman)
Motor Yacht and Sailing
P.O. Box 2319, FDR Station
New York , NY 10002

Additionally, Marlow-Hunter recommends that you purchase and read the following:

Yachtsman Handbook
by Tom Bottomly
Motor Yacht and Sailing
P.O. Box 2319, FDR Station
New York, NY 10002

The Complete Book of Boat Maintenance and Repair
by Dave Kendall
Doubleday and Co.
Garden City, NY 11530

Pleasure Yachting and Seamanship
U.S. Coast Guard Auxiliary
306 Wilson Road Oaklands
Newark, DE 19711

1.5 Original Equipment Manufacturers' (OEM) Manuals

Marlow-Hunters feature various pieces of equipment and components from other manufacturers installed on your boat. Examples include engines, pumps, generators, etc. Most OEMs provide operation and maintenance manuals for your boat's equipment. Keep OEM manuals together with your Marlow-Hunter Operator's Manual in a safe and accessible place. Be sure to transfer them to the new owner if you sell your boat.

NOTE: If information in this Operator's Manual differs from that found in the OEM manuals, the OEM manuals take precedence.

1.6 Warranties

For U.S. and non-EU compliant countries, your Marlow-Hunter warranty info can be found in the Limited Warranty chapter in this manual.

For international owner's, your Marlow-Hunter warranty can be found in your CE compliant Owner's Manual.

Nearly all OEM equipment has its own limited warranty. Warranty information and registration procedures for these components are found on the manufacturer's websites or OEM manuals digitally included with Marlow-Hunter's digital Operator's Manual. Locate and read these individual warranties and organize them for easy, future reference.

1.7 Hull Identification Number (HIN)

The "Hull Identification Number", located on the starboard aft side of your boat, is the most important identifying factor of your boat and must be included in all correspondence, orders and warranty claims. Failure to include this information creates delays.

Hull Number Format: US-MHLYYXXXDXZZ

"US" - country origin, "MHL" - Manufacturer, "YY" - model number, "XXX" - hull number, "D" - manufacture start month code, "X" - manufacture year code, "ZZ" - model year

Also of importance are the engine part numbers and serial numbers. When corresponding or ordering parts, please include these numbers in your communications. Refer to the engine OEM manuals for serial number locations and record them for future reference.

1.8 Manufacturer's Certifications

As a boat manufacturer, Marlow-Hunter builds our products to the guidelines established under the Federal Boat Safety Act of 1971. This act was promulgated by the U.S. Coast Guard having the authority to enforce such guidelines on boat manufacturers selling products in the United States. Marlow-Hunter ensures that all of it's products comply with these guidelines.

The National Marine Manufacturers Association (NMMA) provides Marlow-Hunter with a third party certification. The NMMA is an organization that represents the marine

industry and assists manufacturers, boat dealers, marinas, repair yards and component suppliers in areas of legislation, environmental concerns, marine business growth, and state and federal government agency interaction. The third party certification that Marlow-Hunter participates in, uses well known Standards and Recommended Practices of the ABYC, American Boat and Yacht Council.

We at Marlow-Hunter participate extensively in the ABYC, which is all non-profit, and develops and publishes voluntary standards and recommended practices for boat on equipment design, construction, service and repair. We utilize all applicable ABYC standards in the construction of Marlow-Hunter boats.

Finally Marlow-Hunter sells their products worldwide, and, as such, must conform to the various rules and regulations required by other countries. Most notably are the European ISO (International Organization for Standardization) standards which require the application of the CE (Common European) mark. This mark, much like the NMMA certification here in the U.S., gives you, the boat owner, specific information concerning your boat.

1.9 Service, Parts and Repair

When your boat needs service, parts, or repair, contact your dealer or Marlow-Hunter at www.marlow-hunter.com to find a service/parts location. To locate repair and parts facilities for the OEM equipment installed on your boat, refer to the respective OEM manual for that component.



MARLOW-HUNTER, LLC

Chapter 2

***Documents
and
Forms***

MH37



This Page Intentionally Left Blank

This chapter introduces and includes the following documents and forms that will be important in the ownership and operation of your vessel:

1. Pre-Delivery Service Record
2. Vessel Information Form
3. Preliminary Care and Maintenance Checklist
4. Float Plan
5. USCG Recreational Boating Accident Report
6. Vessel Inventory Forms
7. Miscellaneous Forms

Many of these forms contain lists of items and recommendations that we believe should be incorporated into your own ongoing list of preventative maintenance items and safety check points. THIS LIST SHOULD NOT BE CONSIDERED A COMPLETE SERVICE MANUAL OR THE ONLY ITEMS ON YOUR BOAT IN NEED OF ROUTINE MAINTENANCE, INSPECTION OR ATTENTION.

You will find that we address commonly found optional equipment items installed on Marlow-Hunter boats, as well as most standard equipment from Marlow-Hunter. Owner's need to familiarize themselves with individual equipment manuals on all such items, especially after-market purchases or optional equipment installed by your dealer or Marlow-Hunter. This should insure that you are following the manufacturer's recommendations for proper maintenance and up-keep.

Again, to reemphasize, we strongly recommend that all owners complete a Power Squadron course followed with a complementary boat inspection before leaving the dock. To locate a Power Squadron in your area please visit www.usps.org.

In addition, reviewing and familiarizing yourself with the Chapman's Piloting Manual is also highly recommended for every boat owner. This manual contains demonstrations for safety drills which should be practiced routinely, dealing with adverse conditions, general boat handling and recommended safety equipment. Our opinion is that no boat owner should operate a boat without first reviewing this manual and without having ready access to it while boating.

2.1 Pre-Delivery Service Record

Your Marlow-Hunter dealer will complete a Pre-Delivery Service Record form (Fig. 2.1) before you take delivery

of your boat. It is the dealer's responsibility to both you and Marlow-Hunter to give your boat a final inspection prior to delivery. The purpose of this inspection is to assure proper adjustment and operation of the entire vessel. Your dealer should provide you and Marlow-Hunter a copy of the Pre-Delivery Inspection Report at the time of delivery. Store this document in a safe place. Do not keep it aboard your boat.

If this form is not fully completed, Marlow-Hunter will not pay warranty costs (see the Warranty chapter in this operator's manual for further information) for items that should have been covered in the pre-delivery service inspection and recorded on the Pre-Delivery Inspection Report.

2.2 Vessel Information Form

This form (Fig. 2.2) is convenient for helping to identify specific information regarding your boat. We recommend you place a copy on the boat and another ashore allowing quick reference.

2.3 Preliminary Care and Maintenance Checklist

Use these checklists (Fig. 2.3) to help you cover the various facets of operating your boat. These checklists will help you standardize and familiarize your review of the boat's equipment and components and provide the basis for an enjoyable and safe boating experience.

2.4 Float Plan

This form (Fig. 2.4) is useful by providing a record of your destination, departure and return times, boat description, passenger list, and other information about the trip you have planned. At the bottom of the form is space for listing emergency phone numbers in case your return is delayed past the expected time. It also has space for indicating information about the person filling the report. Leave the completed form ashore with a responsible person. We recommend you make several copies of this form each boating season to make sure you have a good supply.

2.5 USCG Recreational Boating Accident Report

No one likes to think about having a boating accident, but boating accidents do happen. You must file an accident report (Fig. 2.5) after a boating accident just as you must file an accident report after an automobile accident.

You must file this report with the U.S. Coast Guard within 10 days if boat or property damage totals \$2,000 or more and within 48 hours if an accident results in one of the following:

1. Death
2. A person disappears
3. Personal injury requiring medical treatment beyond first aid

State statutes determine whether you must file an accident report in this case. An accident report must be filed if the damage exceeds a threshold dollar value as established by the states; the threshold is generally \$100-\$200. Refer to Boating Safety Resource Center at www.uscgboating.org to verify the threshold for a particular state.

NOTE: State and local agencies may also have accident reporting requirements. Check with local enforcement agencies or with your dealer regarding local requirements.

2.6 Vessel Inventory Forms

These forms (Fig. 2.6) are itemized to help organize and document your gear and equipment. Forms exist for emergency equipment, spare parts, light bulbs and general listing.

2.7 Miscellaneous Forms

Finally, inserted at the end of this section are several documents (Fig. 2.7) you may find helpful. These sample forms are designed to help your organization in dealing with your new boat. Please familiarize yourself with these forms; they can be very useful.

Documents and Forms

MARLOW-HUNTER, LLC
P.O. BOX 1030 – ALACHUA, FL 32616

PRE-DELIVERY SERVICE RECORD

IMPORTANT: This completed report is required for processing of claims for warranty adjustment. Please forward immediately.

DEALER NAME			OWNER NAME		
ADDRESS			ADDRESS		
CITY		STATE/ZIP	CITY		STATE/ZIP
HULL #	YEAR	SIZE	ENG #	ENGINE MAKE	

BEFORE LAUNCH PROCEDURE:

	DEALER	OWNER
1. Prop Size _____ Shaft Size _____	_____	_____
2. Prop Rotation _____	_____	_____
3. Prop installed properly with cotter pin in shaft	_____	_____
4. Shaft turns freely	_____	_____
5. Shaft aligned in shaft log tube	_____	_____
6. Shaft alignment in relation to strut	_____	_____
7. Engine intake thru hull clear and installed properly	_____	_____
8. Pet-cocks closed on engine	_____	_____
9. Rudder swings freely – no binding or hard spots (check with wheel)	_____	_____
10. Emergency tiller steering system, complete operational check with owner	_____	_____
11. Primary steering system, complete operational check	_____	_____
12. Cockpit seat hatches lift smoothly	_____	_____
13. Companionway sliding hatch and door works smoothly	_____	_____
14. Check keel bolts for tightness	_____	_____
15. Hook up and tighten battery cables	_____	_____
16. Check hose clamps on engine pickup, engine exhaust, vanity drain, galley drain, fresh water system, toilet hoses and bilge pump – A/C – genset	_____	_____
17. Electrical equipment operational: () Running lights () Cabin lights () Anchor light () Steaming light () Stern light () Courtesy lights	_____	_____
18. Check bilge pumping system – operational	_____	_____
19. VHF radio operational	_____	_____
20. Mast wire tube properly sealed	_____	_____
21. Check optional dripless packing spring tension & set screws	_____	_____

BOAT IN WATER:

22. Check for leaks: rudder post, shaft log, stuffing box, strut bolts and keel bolts	_____	_____
23. Check for thru-hull fitting leaks: engine pickup, galley sink drain, toilet pickup, toilet discharge, knot/depth, A/C, refrigerator	_____	_____
24. Check windows and deck hardware for leaks	_____	_____
25. Check opening ports and hatches for leaks	_____	_____
26. Check rub rail and deck joints for leaks	_____	_____
27. 110 dockside cord and receptacles OK	_____	_____
28. Toilet operates OK, intake open, outlet open, pumps OK	_____	_____
29. Pressure water system operates OK (let pressure stand for 15 minutes to see if pump goes on)	_____	_____
30. Hot water heater operation OK	_____	_____
31. Check stove system for leaks per manufacturer's instructions	_____	_____
32. With fuel tank full, no leaks at fill pipe, overflow vent or any fuel line connections or gauge	_____	_____
33. Drawers work smoothly	_____	_____
34. Doors work smoothly	_____	_____
35. Engine aligned .004 or less	_____	_____
36. Check and tighten all engine mount attachments	_____	_____
37. Check and tighten all engine flange and coupling bolts	_____	_____

BEFORE STARTING ENGINE:

38. Throttle control cable travel and brackets OK	_____	_____
39. Clutch control cable travel and brackets OK	_____	_____
40. Crank case oil level at full mark	_____	_____
41. Transmission oil level at full mark	_____	_____
42. Engine shut off OK	_____	_____
43. Engine water pickup OK	_____	_____
44. Bleed air out of fuel line	_____	_____
45. Check heat exchanger fluid level and overflow bottle	_____	_____

AFTER STARTING ENGINE:

	DEALER	OWNER
46. Oil pressure OK	_____	_____
47. Water flow out of exhaust	_____	_____
48. Check fuel line connections for leaks	_____	_____
49. No engine water or oil leaks	_____	_____
50. Idling speed OK, Max RPM OK	_____	_____
51. Gear shifts work properly – forward, reverse, neutral	_____	_____
52. Instruments register properly	_____	_____
53. Check stuffing box drip rate (3-4/minute)	_____	_____
54. Purge optional dripless packing assembly	_____	_____
55. Hour meter reading properly	_____	_____

OPTIONAL GENERATOR ENGINE:

56. Crank case oil level at full mark	_____	_____
57. Engine water pickup open	_____	_____
58. Check heat exchanger fluid level and overflow bottle if supplied	_____	_____
59. Bleed air out of line	_____	_____
60. Check flow out exhaust	_____	_____
61. Hour meter reading properly	_____	_____

RIGGING:

62. Mast steaming light OK	_____	_____
63. Spreaders properly secured	_____	_____
64. Shrouds and stays right length	_____	_____
65. Main and jib halyards right length	_____	_____
66. Jib fits properly	_____	_____
67. Main fits and operates properly	_____	_____
68. Topping lift, out haul, reefing system installed properly	_____	_____
69. Install windex	_____	_____
70. Main sheet and blocks OK	_____	_____
71. Jib sheet and blocks OK	_____	_____
72. Winch handles fit and winches smooth	_____	_____
73. Rigging properly tuned and pinned	_____	_____
74. Furling system operational	_____	_____
75. Traveler arch ground wire installed	_____	_____

FINAL CHECK:

76. All accessory equipment on board	_____	_____
77. All loose gear on board	_____	_____
78. Owner's manual on board	_____	_____
79. Warranty registration form completed and signed	_____	_____
80. Owner familiarized with operation and warranty policy	_____	_____
81. Boat properly cleaned, interior and exterior	_____	_____
82. Owner advised to complete component warranty cards	_____	_____
83. All plexiglass hatches and ports free of scratches	_____	_____
84. All interior wood free of dents, dings and scratches	_____	_____
85. Interior cushions, bedding & curtains clean and free of defects	_____	_____
86. Exterior gelcoat free of defects	_____	_____
87. Fee of water intrusion above and below the water line	_____	_____
88. All electronic equipment calibrated and operational	_____	_____
89. Exterior wood free of defects	_____	_____
90. Life lines adjusted and secure	_____	_____

Dealer Signature: _____ Date: _____

I have received, read and understand completely the Marlow-Hunter Limited Warranty for my boat.

Owner Signature: _____ Date: _____

DEALER COMMENTS (Refer to check list by item #)

Remove 2nd & 3rd Copies and Forward Form Intact.

DISTRIBUTION: Original – Marlow-Hunter Service Dept., Canary – Owner, Pink – Dealer
FORM #300-16/0112

Documents and Forms

VESSEL INFORMATION

Name		Hailing Port	
I.D. Number		Radio Call Signal	
Owner's Name		Telephone Number ()	
Address			
Builder		Model	
Year	Length	Draft	Beam
Height	Weight	Hull Color	Trim Color
Propeller Size(s)		Rotation	
Vessel Construction Material			
Engine Make(s)		Engine Model(s)	
Serial Number(s)		Number of Cylinders (per)	
Oil Type Winter		Summer	Capacity
Fuel Tank(s) Capacity		Water Tank(s) Capacity	
Waste Tank Capacity		LPG Gas Capacity	
Hot Water Tank Capacity		Generator Make/Model	Generator Oil Capacity
Transmission Type	Transmission Model		Transmission Fluid/Oil Capacity
Steering Type		Steering Model	Steering Fluid/Oil Capacity
Insurance Company		Telephone Number ()	
Address			
Policy Number		Agent	

Preliminary care and maintenance checklist

Some items listed below pertain to optional equipment and may or may not be applicable on your boat. A qualified Technician should be used if you are not completely confident in your ability to make repairs or inspections.

Out of Water Inspection

Pre-launch inspection

- Sacrificial zinc anodes installed (if applicable)
- Propeller installed with keyway, nuts and cotter pin
- Propeller shaft turns freely and without excess wobble (if applicable)
- Strut and shaft log free of corrosion (if applicable)
- Rudder swings easily & correct with wheel direction
- Rudder and post inspected for cracks and/or concealed damage (may require removing rudder)
- Auxiliary tiller handle properly aligned, fits securely and operational
- All thru-hulls and valves below water line inspected for corrosion, labeled and closed until after launch
- Bottom paint in satisfactory condition
- Hull freshly cleaned and waxed (free of gelcoat damage)
- Mooring, safety lines and fenders onboard and in good condition
- House & engine start batteries installed and filled with correct electrolyte levels
- House & engine start battery boxes secured
- All battery terminals clean and wires secured
- Engine block & transmission drains closed
- Transducer in place
- Hose clamps on all systems below water line tight
- Keel bolts tight and clean
- Exhaust hose attached and secured
- Boat is free of internal and external water leaks above water line
(Failure to stop water intrusion could result in permanent damage or deterioration of structural coring materials and internal wiring and cause mildew and molding)

Mast Assembly

- Review manufacturer's manual for operation and maintenance
- Spreaders securely fastened
- Mast and spreaders free of corrosion and stress cracks
- Standing rigging and pins inspected for wear, tear, corrosion and cracking
- External wiring secured for anchor, steaming and deck lights
- Electronic wind indicator installed per manufacturers recommendation (if applicable)
- Manual wind indicator installed on masthead
- VHF antenna installed and connected
- Headsail furling system installed and inspected per manufacturer's recommendation
- Running rigging inspected for wear and tear
- Mast step stand-up blocks secured and operational
- Mainsail, jib sail and flaking system inspected for wear and tear (non-furling mast).
- In- mast system checked for smooth operation and overall condition of sails
- Specified pre-bend and diagonal tensions attained in mast
- Mast to deck wiring properly sealed with drip loop

Anchor System and Ground Tackle

- Anchor windlass (option) inspected per manufacturer's recommendation
- Anchor secured in bow roller assembly
- Spare anchor onboard and accessible (owner purchased)
(See Chapman's Manual for recommendations on anchors, anchor lines and drogues)
- Anchor line pays out and retrieves into anchor line storage without difficulty
- Bitter end of anchor line secured
- Anchor rode inspected and free of abrasions
- Anchor chain shackle is corrosion free and lock-wired at pin after secured to anchor
- Anchor locker drain is unplugged

Fuel System

- Tank fuel level indicator functioning properly
- Fuel clean and treated with engine manufacturer's recommended additives
- Primary and secondary (on engine) filters cleaned or replaced
- Fuel tank supply valves open
- Fuel tank vent clear from tank to atmosphere (hose has anti-siphoned loop in place at hull or deck side)

Steering System

- Inspect and service steering system according to manufacturer's recommendation
- Ensure the autopilot drive is not wet or exposed to water
- Clean and grease autopilot motor swivel joint
- Ensure compass light is operational

Primary Pumps Functional

- Electric bilge pumps and float switches (discharge hose has anti-siphon loop in place to prevent back flow)
- Fresh water pump
- Toilet flush pump
- Shower sump pump
- High water bilge alarm pump
- Manual bilge pump

Illumination and small electrical components check

- Bow light
- Cabin lights
- Stern light
- Deck light
- Instrument lamps
- Masthead light
- Anchor light
- Cockpit storage courtesy light
- Chart light
- Reading lights
- Distribution panel lights
- Smoke detectors operational

Documents and Forms

- ___ CO detectors operational
- ___ Engine compartment blower operational
- ___ Auto fire suppression system operational (engine compartment)
- ___ Shore power cord and adapter plug operational. (See manufacturer's manual for complete details.)
- ___ 110 or 220 VAC outlets operational - ground fault circuits functioning
- ___ 110 or 220 VAC inverter/battery charging systems functioning properly

Fresh Water Systems

- ___ Hot water heater drain shut
- ___ All spigots and hose bibs shut
- ___ All tank(s) flushed clean and free of debris and antifreeze
- ___ Water heater tank and lines flushed of antifreeze
- ___ All water lines and components purged of air and checked for leaks
- ___ Sinks and drains checked for leaks and adequate flow
- ___ Cockpit shower operational
- ___ Fresh water filters clean
- ___ Tank water level indicator systems operating- labeling and tank valve selection correspond

Head and Holding Tank Systems

- ___ Vent clear from tank to atmosphere
- ___ Filled with fresh water (electric head)
- ___ Toilets flush to holding tanks properly
- ___ Waste level indicating system properly functioning
- ___ No leaks at any hose fitting within the system

Galley Systems

- ___ Stovetop or oven operational (Refer to manufacturer's manual for proper operation and trouble shooting.)
- ___ Gimbals latch secure and operational
- ___ Microwave operational
- ___ Refrigerator operational and proper temperature attained
- ___ Freezer operational and proper temperature attained
- ___ Icebox drains properly
- ___ Icebox drain plugs installed
- ___ USCG waste disposal-warning poster onboard or in owner's package
- ___ LPG tank filled, installed and connected to regulator; inspect Gas system for leaks after 3 minutes
(Should a leak be detected immediately close the main valve exit boat and seek professional assistance for a thorough inspection.)
- ___ LPG storage locker drain open and tank storage area free of debris

Topside Inspection

- ___ Swim platform operates properly
- ___ Cockpit cushions cleaned and installed
- ___ Canvas properly cleaned and installed
- ___ Rubrail properly secured to hull
- ___ Load bearing hardware securely fastened; this includes but is not limited to cleats and handrails
- ___ Lifeline fittings tight and secure
- ___ Sliding hatch drains free of debris

Documents and Forms

- ___ Companionway drop-ins fit properly in companionway and storage rack
- ___ Plexiglas hatches and ports adjusted and cleaned.
(Cleaners and polishers specifically for Plexiglas can be purchased from most marine supply stores.)
- ___ Traveler arch securely fastened and grounded
- ___ Hatches, ports, windcreens and windows adjusted and cleaned
- ___ External teak cleaned and oiled (Teak decking cleaned with mild soap and water.)
- ___ External railings cleaned with soap and water then hand polished using automotive wax
- ___ All deck fill caps sealed properly and have retainer chains intact (except Waste Pump-out)
- ___ Dorade vents or sealing caps installed
- ___ Topsides surface clean and free of gelcoat damage

Interior Inspection

- ___ Drop-in hatches (bunk and floors) in place and fit securely
- ___ Interior steps and grab rails secured
- ___ Bilges clean and free of debris
- ___ Opening port and hatch screens in place
- ___ Blinds / privacy curtains, shades and interior cushions cleaned, installed and secured
- ___ Head door opens, shuts and latches properly
- ___ Ensure all wires and connection on distribution panels are tight (should be professionally inspected)
- ___ Television / DVD operational
- ___ Stereo / CD operational
- ___ Chapman's Manual onboard and readily available
- ___ Safety gear onboard readily available and up to date.
(See Chapman's Manual and US Coast Guard website at < www.uscg.mil >for details.)
- ___ Boat operator's manual /.OEM manuals onboard

In Water Inspection

Dockside inspection of Engine, pre-start sequence and operating system

- ___ Review engine manual for maintenance requirements and proper starting procedure
- ___ All engine mounting bolts in place and properly torque (per engine manual)
- ___ Crankcase oil at full mark (per engine manual)
- ___ Transmission fluid / oil at full mark (per engine manual)
- ___ Coolant mix ratio proper - heat exchanger and expansion tanks full (per engine manual)
- ___ Seawater intake valve open and no leaks
- ___ Air bled from fuel lines and system
- ___ No fuel leaks at any fittings
- ___ Throttle linkages smooth and operational
- ___ Shutdown system operational
- ___ USCG Oil Discharge warning poster in place
- ___ Exhaust elbows and hoses tight
- ___ Starting sequence and alarms correct
- ___ Oil pressure acceptable (per engine manual)
- ___ Coolant temperature acceptable (per engine manual)
- ___ Alternator DC output at rated rpm (per engine manual)
- ___ Correct idle rpm (per engine manual)
- ___ Water discharged with exhaust
- ___ Hour meter operational

- Fuel level indicators operational
- Throttle cable tension set properly
- Shifter operation correct
- Neutral safety start switch operational
- No inboard exhaust gas leaks
- No fuel / oil / water leaks on engine
- Engine box installed and secured

Dockside inspection of Generator, pre-start sequence and operating system

- Review and follow manufacturer's manual for operation and maintenance
- Seawater strainer water-tight and clean
- No leaks in fuel system - Fuel filters clean
- Lube oil at full mark
- Coolant level full - proper mix ratio with water (per generator manual)
- Seawater discharge overboard with exhaust gas
- No inboard water or exhaust gas leaks
- Proper voltage output to distribution panel (per generator manual)
- Ship / shore power transfer panel function properly
- Starter battery box secured
- Starter battery cable connections clean and tight
- Starter battery electrolyte level proper

Climate Control System

- Review and follow manufacturer's manual for operation and maintenance
- Seawater strainer water tight and clean
- Seawater pump air purged and operational
- Seawater flow adequate fwd and aft
- Fwd system functions properly in all modes of operation
- Aft system functions properly in all modes of operation
- No seawater leaks in system components and lines
- No condensation leaks to deck or liner
- Air return/intake filters clean and clear
- 110 or 220 VAC shore power wired correctly at dock
- Remote control panels operate correctly
- Condensation drains open

Pre-departure Checklist

- Check bilge for extra water
- Check weather conditions and tides
- Check food supply
- Foul weather gear
- Linen, sleeping bags
- Fuel
- Water
- Sunscreen and sunglasses
- Tools
- Docking and anchoring gear
- Check radio operation
- Navigation charts and instruments

Documents and Forms

- ___ Float plan to a friend or Coast Guard
- ___ Fuel for Stove
- ___ Cooking and eating utensils
- ___ Oil level, tight V-belts
- ___ Check for loose electrical connections in the engine compartment
- ___ Secure loose tools or equipment in the engine compartment so as to not get fouled in the engine.
- ___ AC systems off, electrical cord stowed
- ___ Doors and drawers secure
- ___ Check steering lock to lock
- ___ No lines or obstructions near propeller or bow
- ___ Check mast for rigging irregularities and tightness
- ___ Halyards and sheets are ready to run
- ___ Anchor ready to run
- ___ Lifelines are tight
- ___ Turn on water lines
- ___ Stow all loose gear
- ___ Open engine cooling water thru intake valve

Post Sailing Checklist

When leaving your boat at the dock for more than a short time, it is a good idea to review the following checklist to make sure everything is in order. This will help protect the various components of your boat and add considerably to their attractiveness and usable life.

- ___ Flake or furl mainsail and cover or remove and bag.
- ___ Remove and stow all portable deck hardware such as snatch blocks, winch handles, etc.
- ___ Secure the boom to the topping lifts and set it firmly amidships with the main sheet purchase.
(It is also a good idea to rig a line from the steering wheel or tiller to a convenience cleat to keep the rudder from swinging back and forth with the motion of the water or employ the wheel brake if so equipped.)
- ___ Attach the shackle ends of all halyards to convenient fittings and take up slack. Find a location leading away from the mast to keep the halyard from slapping the mast.
- ___ Coil and stow all lines in line lockers
- ___ Cover the winches and steering pedestal when leaving the boat for several days or more
- ___ Close all fuel lines and seacocks
- ___ Switch off the electrical system
- ___ Pump out the bilge
- ___ Check air vents, secure ports and hatches, swab the deck, and clean deck stainless, particularly if you have operated in salt water.

Documents and Forms

Float Plan

Name of Operator _____ Age _____

Address _____

Phone _____

Boat Make _____ Model _____

Length _____ Hull Color _____ Deck Color _____

Registration No. _____ Home Port _____

Radio frequencies _____

Equipment on Board, PFDs, Flares, Anchor _____

Fuel Capacity _____ Water Capacity _____

Distinguishing Features _____

Departed from _____

Date _____ Time _____

Destination _____

Stops _____

Estimated time of Arrival: Date _____ Time _____

Name, age, address and phone number of other persons on board:

Documents and Forms

DEPARTMENT OF HOMELAND SECURITY U.S. Coast Guard RECREATIONAL BOATING ACCIDENT REPORT			OMB Control Number: 1625-0003 Expires: 9/30/2014
<p>INSTRUCTIONS: Use "Report required because" section below to determine if a report is required for your accident. If required, please have each vessel owner or operator involved in the accident submit a report to their state reporting authority. Each boat operator/owner involved in an accident should submit a separate report. For each question below, please provide answers if applicable and if known; otherwise leave blank. Privacy Act Notice: Authority- 46 U.S.C. 6102 and 33 CFR 173 & 174 authorize the collection of information on boating accidents. Purpose-The Coast Guard uses this information for statistical purposes, chiefly to inform the public, to measure the Program's efforts, and to regulate issues relating to boating safety. Routine Uses-The Coast Guard shares this information within the agency, and if state and federal law permit it, to the public.</p>			
REPORT SUBMISSION			
<p>Report required because (select all that apply):</p> <p><input type="checkbox"/> At least one person in this accident <i>died</i>: If so, how many? _____</p> <p><input type="checkbox"/> At least one injured person in this accident <i>required or was in need of treatment beyond first aid</i>: If so, how many? _____</p> <p><input type="checkbox"/> At least one person in this accident <i>disappeared</i> and has not yet been recovered: If so, how many? _____</p> <p><input type="checkbox"/> All boat and other property <i>damage</i> (e.g., fishing/hunting gear) caused by this accident <i>totaled</i> (or <i>likely totaled</i>) \$2,000 or more:</p> <p style="padding-left: 40px;">Approximate value of damage to <i>your</i> boat: \$ _____</p> <p style="padding-left: 40px;">Approximate value of damage to <i>your</i> other property: \$ _____</p> <p><input type="checkbox"/> Your or another <i>boat</i> in this accident was (or <i>likely was</i>) a <i>total loss</i></p> <p>Report submitted by (select all that apply):</p> <p><input type="checkbox"/> Boat Operator (required if possible)</p> <p><input type="checkbox"/> Boat Owner (if operator unable, or same as operator)</p> <p><input type="checkbox"/> Other (describe): _____</p>		<p>To be submitted within:</p> <p>48 hours (if <i>injury, disappearance or death</i>)</p> <p>10 days (if <i>boat/property damage only</i>)</p> <p>To be submitted to: (Local State Reporting Authority)</p> <p>Phone: _____</p> <p><small>You may submit any comments concerning the accuracy of the burden estimate or any suggestions for reducing the burden to: Commandant (CG-5422), U.S. Coast Guard, Washington, DC 20593-0001 or Office of Management and Budget, Paperwork Reduction Project (1625-0003), Washington, DC 20503. Questions relating to the collection of this data should be sent to the Coast Guard.</small></p>	
		For State Agency Use Only	
		First Name	Last Name
		Phone: _____	
First Name	Last Name	Phone	Primary Cause of Accident
ACCIDENT SUMMARY			
<p>WHEN</p> <p>Date: _____ Time: _____ am <input type="checkbox"/> pm <input type="checkbox"/> (mm/dd/yyyy) (select one)</p>		<p>ACCIDENT DESCRIPTION: Briefly describe this accident (attach extra pages if necessary)</p>	
<p>WHERE</p> <p>Body of Water Name _____</p> <p>Location (on water) description _____</p> <p>Nearest city/town _____</p> <p>County: _____ State: _____</p>			
<p>YOUR BOAT – PEOPLE</p> <p># people on board (including operator): _____</p> <p># people being towed (e.g., on tubes, skis): _____</p> <p># people wearing lifejackets (on board or towed): _____</p>		<p>DAMAGE TO YOUR BOAT: Briefly summarize any damage to your boat</p>	
<p>OTHER BOATS INVOLVED IN ACCIDENT</p> <p># of other boats involved: _____</p>			
		<p>DAMAGE TO YOUR OTHER PROPERTY: (NOT BOAT) Briefly summarize any damage to your other property (not boat)</p>	

Documents and Forms

For each question below, please provide answers IF APPLICABLE AND IF KNOWN, otherwise leave blank.													
YOUR BOAT													
BOAT IDENTIFICATION													
Your Boat Name:						Manufacturer:							
Model Name:						Model Year:							
Registration #:						Documentation #:							
Hull Identification # (HIN)						Rented: <input type="checkbox"/> Yes <input type="checkbox"/> No							
SIZE ESTIMATES													
Length: ft.				Depth from transom (stern) to keel (bottommost point): ft. in.				Beam width at widest point: ft.					
HULL MATERIAL													
Type of Hull Material (select one)													
Fiberglass			Wood			Rubber/vinyl/canvas			Other (describe):				
Aluminum			Steel			Plastic							
BOAT TYPE													
Boat Type (select one)						Available Propulsion (select all that apply)							
Cabin motorboat		Inflatable		Canoe		Personal watercraft (PWC) (e.g., Wave Runner™, Jet Ski™, Sea-Doo™)		Propeller		Air thrust			
Open motorboat		Houseboat		Rowboat				Sail		Other (describe):			
Auxiliary sail		Sail (only)		Air boat				Manual					
Pontoon boat		Kayak						Water jet					
ENGINE													
# Engines			Engine type and horsepower (select one)						Fuel type (select all that apply)				
Manufacturer			Outboard		Sterndrive (I/O)		Inboard		None		Gasoline	Diesel	Electric
			Total horsepower: hp										
SAFETY MEASURES													
Organizations that have conducted a vessel safety check (VSC) on board your boat within the past year (including carriage of safety equipment, e.g., lifejackets, anchor and line, fire extinguishers):													
US Coast Guard Auxiliary: VSC Decal? <input type="checkbox"/> Yes <input type="checkbox"/> No						Federal Agency (Name)							
US Power Squadrons: VSC Decal? <input type="checkbox"/> Yes <input type="checkbox"/> No						State Agency (Name)							
						Other Agency (Name)							
# Life jackets on board:			# Fire extinguishers on board:			Type of fire extinguishers (e.g., ABC):							
			# Fire extinguishers used:			Amount of fire extinguishers used:							
ACCIDENT DETAILS – EXTERNAL CONDITIONS													
WEATHER													
Overall weather was (select one)				It was (select one)		Visibility was (select one)			Wind was (select one)				
Clear		Raining		Day		Good			0 mph (none)				
Cloudy		Snowing		Night		Fair			Over 0, up to 12 mph (light)				
Foggy		Hazy				Poor			Over 12, up to 25 mph (moderate)				
Other (describe):				Approximate air temperature:		°F			Over 25, up to 55 mph (strong)				
									Over 55 mph (stormy)				
WATER													
Overall water conditions (select one):						Other water conditions:							
Up to 6 in. waves (calm)						Approximate water temperature:			°F				
Over 6 in., up to 2 ft. waves (choppy)						Strong current?			Yes		No		
Over 2 ft., up to 6 ft. waves (rough)						Hazardous waters? (e.g., rapid tidal flow, currents)			Yes		No		
Over 6 ft. waves (very rough)						Congested waters?			Yes		No		

Documents and Forms

For each question below, please provide answers IF APPLICABLE AND IF KNOWN, otherwise leave blank.

ACCIDENT DETAILS – ACTIVITIES AND OPERATIONS ON YOUR BOAT

OPERATOR/PASSENGER ACTIVITIES

Operator/passenger activities on *your* boat at time of accident:

Activities were (select one) Operator/Passenger activities (select all that apply)

Recreational	Fishing	Tubing	Starting engine
Commercial	Hunting	Water Skiing	Making repairs
	White water activity (e.g., rafting)	Relaxing	Other (list):

BOAT OPERATIONS

Your boat operations at time of accident (select all that apply)

Cruising (underway under power)	Drifting	Racing	Towing another vessel
Changing direction	At anchor	Rowing/paddling	Launching
Changing speed	Being towed	Docking/undocking	Tied to dock/mooring
Sailing	Other (list)		

ACCIDENT DETAILS – CONTRIBUTING FACTORS ON YOUR BOAT

CONTRIBUTING FACTORS

Indicate factors on *your* boat which may have contributed to this accident (select all that apply)

Alcohol use	Improper lookout	Dam/lock	Starting in gear
Drug use	Operator inattention	Force of wake/wave	Sharp turn
Excessive speed	Operator inexperience	Hazardous waters	Restricted vision (e.g., fog)
Improper anchoring	Language barrier	Heavy weather	Mission/inadequate aids to navigation (e.g., buoy, daymarker)
Improper loading	Navigation rules violation	Ignition of fuel or vapor	Inadequate on-board navigation lights
Overloading	Failure to vent	Hull failure	People on gunwale, bow or transom
Other (describe):			

ACCIDENT DETAILS – YOUR BOAT

MACHINERY/EQUIPMENT FAILURE

Failure of the following machinery/equipment on *your* boat contributed to this accident (select all that apply)

Engine	Onboard lights	Shift	Sound equipment (e.g., horn, whistle)
Electrical system	Seats	Radio	Auxiliary equipment
Fuel system	Steering	Fire extinguisher	Other (list):
Sail/mast	Throttle	Ventilation	
Onboard navigation aids (e.g., GPS)			

ACCIDENT DETAILS – EVENTS ON YOUR BOAT

ACCIDENT EVENTS

Types of events occurring to/on *your* boat during accident (select all that apply)

Collision with recreational boat	Flooding/swamping	Person fell overboard
Collision with commercial boat (e.g., tug, barge)	Fire/explosion – fuel	Person fell on/within boat
Collision with fixed object (e.g., dock, bridge)	Fire/explosion – non-fuel	Sudden medical condition
Collision with submerged object (e.g., stump, cable)	Carbon monoxide exposure	Person struck by boat
Collision with floating object (e.g., log, buoy)	Mishap of skier, tuber, wake boarder, etc.	Person struck by propeller or propulsion unit
Capsizing	Person left boat voluntarily	Person electrocuted
Grounding	Person ejected from boat (caused by collision or maneuver)	
Sinking	Other (describe)	

Documents and Forms

For each question below, please provide answers IF APPLICABLE AND IF KNOWN, otherwise leave blank.											
ACCIDENT DETAILS – YOUR BOAT- INJURED PEOPLE RECEIVING OR IN NEED OF TREATMENT BEYOND FIRST AID											
<i>Report only</i> injured people on, struck by, or being towed by <i>your boat</i> , receiving <i>or in need of</i> treatment beyond first aid. <i>Do not report</i> injured people on, struck by, or being towed by <i>another boat or no boat</i> (e.g., swimmers, people on a dock). <i>If more than one</i> injured person to report, attach additional copies of this page. <i>If none</i> , SKIP INJURED PEOPLE section.											
INJURED PERSON											
First Name				MI		Last Name					
Street											
City				State				Zip			
Phone				Date of Birth (mm/dd/yyyy)				Age			
INJURY DETAILS											
Injury caused when person (select all that apply)						Nature of most serious injury (select one)					
Struck the (e.g., boat, water):						Scrape/bruise		Dislocation			
Was struck by a (e.g., boat, propeller):						Cut		Internal organ injury			
Was exposed to carbon monoxide poisoning						Sprain/strain		Amputation			
Received an electric shock						Concussion/brain injury		Burn			
Other (describe):						Spinal cord injury		Other (describe):			
Person was wearing lifejacket?		Yes		No		Broken/fractured bone					
Person received treatment beyond first aid?		Yes		No		Body part of most serious injury (e.g., head, trunk, leg):					
Person was admitted to a hospital?		Yes		No							
ACCIDENT DETAILS – YOUR BOAT – DEATHS/DISAPPEARANCES											
<i>Only report</i> deaths/disappearances of people on, struck by, or being towed by <i>your boat</i> . If more than one death/disappearance to report, attach additional copies of this page. <i>If none</i> , SKIP DEATHS/DISAPPEARANCES section.											
PERSON WHO DIED/DISAPPEARED											
First Name				MI		Last Name					
Street											
City				State				Zip			
Phone				Date of Birth (mm/dd/yyyy)				Age			
DETAILS OF DEATH/DISAPPEARANCE											
Injury caused when person (select all that apply)						Nature of death/disappearance (select one)					
Struck the (e.g., boat, water):						Death – by drowning					
Was struck by a (e.g., boat, propeller):						Death – other likely cause (describe)					
Was exposed to carbon monoxide poisoning											
Received an electric shock						Disappeared and not yet recovered					
Other (describe):						Person was wearing lifejacket?		Yes		No	

Documents and Forms

For each question below, please provide answers IF APPLICABLE AND IF KNOWN, otherwise leave blank.					
ACCIDENT DETAILS – YOUR BOAT OPERATOR					
OPERATOR INSTRUCTION			OPERATOR SAFETY MEASURES		
Boating safety instruction completed <i>(select all that apply)</i>			On board, prior to accident, was operator wearing:		
None			A lifejacket?	Yes	No
State course			An engine cut-off switch <i>(Lanyard or wireless device)</i> if equipped?	Yes	No
USCG Auxiliary course			On board, prior to accident, was operator using:		
US Power Squadrons course				Alcohol?	Yes
Internet <i>(name of sponsoring organization)</i>			Drugs?	Yes	No
Other <i>(describe)</i>			Operator arrested for Boating Under the Influence?	Yes	No
			Weather reports consulted prior to accident?	Yes	No
OPERATOR EXPERIENCE					
Experience operating this type of boat <i>(select one)</i>					
0 to 10 hours	Over 10, up to 100 hours	Over 100, up to 500 hours	Over 500 hours		
ACCIDENT DETAILS – OTHER KEY PEOPLE					
Only report other key people <i>not already documented</i> as injured, died, disappeared or operator/owner of your boat. If more than two other key people to report, attach additional copies of this page.					
NAME/ADDRESS					
This other key person was a(n) <i>(select all that apply)</i>					
<input type="checkbox"/> Other boat operator <input type="checkbox"/> Other boat owner <input type="checkbox"/> Owner of other damaged property <input type="checkbox"/> Passenger on your boat <input type="checkbox"/> Witness					
First Name		MI	Last Name		
Street					
City		State	Zip	Phone	
Other boat name <i>(if any)</i>			Other boat registration # <i>(if any)</i>		
NAME/ADDRESS					
This other key person was a(n) <i>(select all that apply)</i>					
<input type="checkbox"/> Other boat operator <input type="checkbox"/> Other boat owner <input type="checkbox"/> Owner of other damaged property <input type="checkbox"/> Passenger on your boat <input type="checkbox"/> Witness					
First Name		MI	Last Name		
Street					
City		State	Zip	Phone	
Other boat name <i>(if any)</i>			Other boat registration # <i>(if any)</i>		

Documents and Forms

For each question below, please provide answers IF APPLICABLE AND IF KNOWN, otherwise leave blank.						
YOUR BOAT OPERATOR						
NAME/ADDRESS						
First Name	MI	Last Name				
Street						
City	State	Zip				
AGE/GENDER/PHONE						
Date of Birth <i>(mm/dd/yyyy)</i>	Age	Gender	Male	Female	Phone	
YOUR BOAT OWNER						
If same as <i>your boat operator</i> SKIP rest of YOUR BOAT OWNER section.						
NAME/ADDRESS/PHONE						
First Name	MI	Last Name				
Street						
City	State	Zip	Phone			
PERSON SUBMITTING THIS REPORT						
If same as <i>your boat operator</i> OR <i>owner</i> , SKIP rest of PERSON SUBMITTING THIS REPORT section.						
NAME/ADDRESS/PHONE/ROLE						
First Name	MI	Last Name				
Street						
City	State	Zip	Phone			
I was a(n) (select one)						
<input type="checkbox"/>	Other person on board <i>this</i> boat					
<input type="checkbox"/>	Accident witness <i>not</i> on board <i>this</i> boat					
<input type="checkbox"/>	Other (<i>describe</i>):					
SIGNATURE OF PERSON SUBMITTING THIS REPORT						
Your signature					Date (mm/dd/yyyy)	
<p>An Agency may not conduct or sponsor and a person is not required to respond to an information collection, unless it displays a currently valid OMB Control Number.</p> <p>The Coast Guard estimates that the average burden for this report form is 30 minutes. You may submit any comments concerning the accuracy of this burden estimate or any suggestions for reducing the burden to: Commandant (CG-5422), U.S. Coast Guard, Washington, DC 20593-0001 or Office of Management and Budget, Paperwork Reduction Project (1625-0003), Washington, DC 20503.</p>						

VESSEL INVENTORY- EMERGENCY EQUIPMENT

Date Purchased	Stowage Life	Description	Location on Board

The U.S. Coast Guard provides free to anyone a pamphlet titled "Federal Requirements for Recreational Boats"
 For more information go to www.uscg.mil.

VESSEL INVENTORY- SPARE PARTS

Date Purchased	Stowage Life	Description	Location on Board

The U.S. Coast Guard provides free to anyone a pamphlet titled "Federal Requirements for Recreational Boats"
For more information go to www.uscg.mil.



MARLOW-HUNTER, LLC

Chapter 3

Limited Warranty

MH37



This Page Intentionally Left Blank

Limited Warranty

Your boat comes with a prorated Two-Year Limited Warranty and a Five-Year Limited Hull Structure and Bottom Blister Warranty. The actual warranty is outlined in the subsequent pages of this chapter and is organized into the following sections:

1. General Information
2. Phase One of the Limited Two-Year Warranty
3. Phase Two of the Limited Two-Year Warranty
4. Limited Five-Year Hull Structure and Bottom Blister Warranty
5. Restrictions Applicable to Warranties
6. Warranty Registration
7. Transfer of Limited Warranties
8. Owner Information Card
9. Pre-Delivery Service Record (PDSR)
10. Warranty Registration Form
11. Sample Acknowledgment of Ownership Transfer
12. Graphical Explanation of Warranty Coverage



MARLOW-HUNTER, LLC
Each Better Than the Last

YOUR MARLOW-HUNTER LIMITED WARRANTY

Marlow-Hunter, LLC (“Hunter”) offers a prorated Limited Warranty on every boat sold and commissioned through an authorized Hunter dealer. A copy of this prorated Limited Warranty is included here, and in your Operator’s Manual. If for some reason you are not able to understand the terms of the prorated Limited Warranty, read, or view this document, please contact your local dealer for a replacement copy.

We stand behind the quality of your boat with the above and below mentioned warranty, which you should review. To insure the operation and validity of your prorated limited warranty, please complete the attached card and send it to Marlow-Hunter, LLC within ten (10) days of the purchase date. Section 15 of the U.S. Federal Boat Safety Act requires registration of a boat’s first owner. Maintain a copy of the completed owner card for your own reference.

The following prorated warranties apply to all 2015 Model Year boats produced by MARLOW-HUNTER, LLC:

Phase one of the LIMITED TWO-YEAR WARRANTY:

During the first year of ownership or remaining coverage period Hunter warrants to the first-use purchaser and any subsequent owner during this limited warranty period that any part manufactured by Hunter will be free of defects caused by faulty workmanship or materials for a period of twelve (12) months from the date of delivery to the first-use purchaser (see special conditions below) under normal use and service. During this period, as the sole and exclusive remedy, Hunter’s obligation under the warranty is limited to the repair or replacement of any such part deemed defective by Hunter. Reimbursement for warranty repairs are to be based on a reasonable number of hours and labor rate established by Hunter.

ALL HUNTER WARRANTS AUTOMATICALLY START NINE MONTHS AFTER THE BOAT LEAVES HUNTER.

Phase two of the LIMITED TWO-YEAR WARRANTY:

During the second year of ownership or remaining coverage period Hunter warrants to the first-use purchaser that any part manufactured by Hunter will be free of defects caused by faulty workmanship or materials. This additional twelve (12) months of coverage ends twenty four (24) months from the date of delivery to the first use purchaser under normal use and service or thirty three (33) months after the boat leaves Hunter. During this period, as the sole and

Limited Warranty

exclusive remedy, Hunter's obligation under the warranty is limited to the repair or replacement of any such part deemed defective by Hunter. Reimbursement for warranty repairs during the second year are to be based on a reasonable number of hours and at fifty percent of the labor rate established by Hunter.

LIMITED FIVE-YEAR HULL STRUCTURE AND BOTTOM BLISTER WARRANTY

Hunter warrants to the first-use purchaser and any subsequent owner during the limited warranty period that the hull of each boat will be free from structural defects in materials and workmanship for a period of five (5) years from the date of delivery to the first-use purchaser (see special conditions below) under normal use and service.

This limited warranty applies only to the structural integrity of the hull and the supporting pan/grid or stringer system. Hulls, pan/grid or stringers modified in any way or powered with engines other than the type and size installed or specified by Hunter are not covered by this limited warranty. As the sole and exclusive remedy, Hunter's obligation under the warranty is limited to repair or replacement of any such defective part.

ALL HUNTER WARRANTS AUTOMATICALLY START NINE MONTHS AFTER THE BOAT LEAVES HUNTER.

Hunter also warrants to the first-use purchaser and any subsequent owner during the warranty period that the boat will be free from gelcoat blistering on underwater surfaces of the hull, excluding the keel and rudder, for a period of five (5) years from the date of delivery to the first-use purchaser (see special conditions below) under normal use and service. During this period, Hunter will supply or reimburse an authorized Hunter dealer for labor required to repair a blistered underwater surface of the hull. The labor cost reimbursement will be based on the Labor Allowance Schedule established by Hunter from time to time, however if the repair is performed by a non-Hunter dealer, the repair cost must be authorized by Hunter in advance and be based on a reasonable number of hours as determined by Hunter. Hunter will not pay transportation, hauling, launching, bottom paint, storage, dockage, cradling rental, rigging and derigging, or other similar costs. It is recommended that the repair be done during a seasonal haul out for service or storage.

HUNTER EXPRESSLY DISCLAIMS THE IMPLIED WARRANTIES OF MERCHANTABILITY AND FITNESS. NEITHER HUNTER NOR THE SELLING DEALER SHALL HAVE ANY RESPONSIBILITY FOR LOSS OF USE OF A BOAT, LOSS OF TIME, INCONVENIENCE, COMMERCIAL LOSS, OR CONSEQUENTIAL DAMAGES.

ALL HUNTER WARRANTS AUTOMATICALLY START NINE MONTHS AFTER THE BOAT LEAVES HUNTER.

Limited Warranty

RESTRICTIONS APPLICABLE TO WARRANTIES

The following circumstances will void the bottom blister limited warranty:

- (1) If the gel-coat has been sanded, sandblasted, or subjected to abrasion or impact.
- (2) If the instructions provided in the Hunter Operator's Manual are not followed according to Hunter's required bottom preparation procedures.

These prorated Limited Warranties do not cover:

- (1.) Paint, sealants, adhesives, window glass, gelcoat, upholstery damage, plastic finishes, engines, engine parts, bilge pumps, stoves, blowers, pressure water pumps, propellers, shafts, rudders, controls, instruments, keels, hoses and equipment not manufactured by HUNTER. Any warranty made and issued by the manufacturer of such items will be, if and where available, provided to the first use purchaser.
- (2.) Problems caused by improper maintenance, storage, cradling, blocking, normal wear and tear, insect control, misuse, neglect, accident, corrosion, electrolysis or improper operation.
- (3) Boats used for hire, training, co-ownership fleets and/or fractional ownership programs and commercial activities including charter.

THESE LIMITED WARRANTIES ARE YOUR SOLE AND EXCLUSIVE REMEDIES AND ARE EXPRESSLY IN LIEU OF ANY AND ALL OTHER REMEDIES AND WARRANTIES EXPRESSED AND IMPLIED, INCLUDING THE WARRANTIES OF MERCHANTABILITY AND FITNESS FOR A PARTICULAR PURPOSE, WHETHER ARISING BY LAW, CUSTOM, CONDUCT, OR USAGE OF TRADE. SOME STATES DO NOT ALLOW LIMITATIONS ON HOW LONG AN IMPLIED WARRANTY LASTS, SO THE ABOVE LIMITATION MAY NOT APPLY TO YOU. IN THE EVENT THAT IMPLIED WARRANTIES ARE FOUND TO EXIST UNDER THE LAW OF A PARTICULAR STATE, NOTWITHSTANDING THE EXCLUSION CONTAINED HEREIN, THE DURATION OF ANY SUCH IMPLIED WARRANTY SHALL BE LIMITED TO THE DURATION OF THE APPLICABLE LIMITED WARRANTY STATED HEREIN. THE PURCHASER ACKNOWLEDGES THAT NO OTHER REPRESENTATIONS WERE MADE TO HIM OR HER WITH RESPECT TO THE QUALITY OR FUNCTION OF THE BOAT. ANY ORAL STATEMENT OR PRINTED MATERIAL ADVERTISING THE BOAT WHICH SPEAKS TO ANY PERFORMANCE CHARACTERISTIC OF THE BOAT OR ANY OF ITS COMPONENTS SHALL BE CONSIDERED AND CONSTRUED AS AN ESTIMATED DESCRIPTION ONLY AND SHOULD NOT BE RELIED UPON AS AN EXPRESS WARRANTY OR AS THE BASIS OF THE BARGAIN FOR THE BOAT OR ANY OF ITS COMPONENTS.

Limited Warranty

ANY CONSEQUENTIAL, INDIRECT OR INCIDENTAL DAMAGES WHICH MAY BE INCURRED ARE EXCLUDED AND PURCHASER'S REMEDY IS LIMITED TO REPAIRS OR REPLACEMENT OF ANY SUCH PART(S). SOME STATES DO NOT ALLOW THE EXCLUSION OR LIMITATION OF INCIDENTAL OR CONSEQUENTIAL OR INDIRECT DAMAGES, SO THE ABOVE LIMITATION OR EXCLUSION MAY NOT APPLY TO YOU. THIS WARRANTY GIVES YOU SPECIFIC LEGAL RIGHTS, AND YOU MAY ALSO HAVE OTHER RIGHTS WHICH VARY FROM STATE TO STATE.

WARRANTY REGISTRATION

These limited warranties shall not be effective unless the HUNTER Warranty Registration Form and Pre-Delivery Service Record, which are furnished with each new boat, are filled out completely and returned to HUNTER within ten (10) days of delivery.

Return of the Warranty Registration Form to HUNTER, signed by both Dealer and Owner, is critical. Warranty coverage cannot be initiated until the completed form is received at HUNTER.

All repairs and/or replacements will be made by an authorized Hunter dealer, or at the option of Hunter, at the Hunter plant. If the repairs are of such a nature that the warranty work must be performed at the HUNTER plant, transportation costs to and from the HUNTER plant shall be paid by the owner. The labor cost reimbursement will be based on a Labor Allowance Schedule established by HUNTER and where not applicable, on a reasonable number of hours as determined by HUNTER. Any repairs and replacements must be approved in advance by an authorized HUNTER service representative.

You should also complete the warranty registration for your engine, stove, head, electric water pump and other accessories, if applicable. Warranty information and registration procedures for these components are found within manufacturers' websites or the manufacturers' manuals digitally included with Hunter's digital Operator's Manual.

TRANSFER OF LIMITED WARRANTIES

The limited warranties will be transferred to a subsequent purchaser of the boat if:

- (1) A notice of the transfer of ownership of the boat is given by the subsequent purchaser in writing to Hunter within thirty (30) days of the transfer.
- (2) The notice shall include the name, address, email address and telephone number of the subsequent purchaser, the date of purchase, the hull number and the name of the seller of the boat.

MARLOW-HUNTER, LLC

OWNER INFORMATION CARD

THE HULL IDENTIFICATION NUMBER IS ON THE STARBOARD AFT SIDE OF THE HULL OR TRANSOM. THIS NUMBER MUST BE PROVIDED IN ALL NECESSARY CORRESPONDENCE.

HULL NO. _____

DATE DELIVERED TO OWNER _____

YACHT NAME _____

OWNER NAME _____

STREET ADDRESS _____

CITY _____ STATE/COUNTRY _____ ZIP CODE _____

HOME PORT _____

ENGINE MODEL _____ SERIAL NO. _____ PROP SIZE _____

DEALER _____ PHONE _____

STREET ADDRESS _____

CITY _____ STATE/COUNTRY _____ ZIP CODE _____

CUSTOMER SERVICE / WARRANTY

Limited Warranty

MARLOW-HUNTER, LLC
P.O. BOX 1030 – ALACHUA, FL 32616

PRE-DELIVERY SERVICE RECORD

IMPORTANT: This completed report is required for processing of claims for warranty adjustment. Please forward immediately.

DEALER NAME			OWNER NAME		
ADDRESS			ADDRESS		
CITY		STATE/ZIP	CITY		STATE/ZIP
HULL #	YEAR	SIZE	ENG #	ENGINE MAKE	

BEFORE LAUNCH PROCEDURE:

- | | DEALER | OWNER |
|---|--------|-------|
| 1. Prop Size _____ Shaft Size _____ | _____ | _____ |
| 2. Prop Rotation _____ | _____ | _____ |
| 3. Prop installed properly with cotter pin in shaft | _____ | _____ |
| 4. Shaft turns freely | _____ | _____ |
| 5. Shaft aligned in shaft log tube | _____ | _____ |
| 6. Shaft alignment in relation to strut | _____ | _____ |
| 7. Engine intake thru hull clear and installed properly | _____ | _____ |
| 8. Pet-cocks closed on engine | _____ | _____ |
| 9. Rudder swings freely – no binding or hard spots (check with wheel) | _____ | _____ |
| 10. Emergency tiller steering system, complete operational check with owner | _____ | _____ |
| 11. Primary steering system, complete operational check | _____ | _____ |
| 12. Cockpit seat hatches lift smoothly | _____ | _____ |
| 13. Companionway sliding hatch and door works smoothly | _____ | _____ |
| 14. Check keel bolts for tightness | _____ | _____ |
| 15. Hook up and tighten battery cables | _____ | _____ |
| 16. Check hose clamps on engine pickup, engine exhaust, vanity drain, galley drain, fresh water system, toilet hoses and bilge pump – A/C – genset | _____ | _____ |
| 17. Electrical equipment operational:
() Running lights () Cabin lights () Anchor light
() Steaming light () Stern light () Courtesy lights | _____ | _____ |
| 18. Check bilge pumping system – operational | _____ | _____ |
| 19. VHF radio operational | _____ | _____ |
| 20. Mast wire tube properly sealed | _____ | _____ |
| 21. Check optional dripless packing spring tension & set screws | _____ | _____ |

AFTER STARTING ENGINE:

- | | DEALER | OWNER |
|---|--------|-------|
| 46. Oil pressure OK | _____ | _____ |
| 47. Water flow out of exhaust | _____ | _____ |
| 48. Check fuel line connections for leaks | _____ | _____ |
| 49. No engine water or oil leaks | _____ | _____ |
| 50. Idling speed OK, Max RPM OK | _____ | _____ |
| 51. Gear shifts work properly – forward, reverse, neutral | _____ | _____ |
| 52. Instruments register properly | _____ | _____ |
| 53. Check stuffing box drip rate (3-4/minute) | _____ | _____ |
| 54. Purge optional dripless packing assembly | _____ | _____ |
| 55. Hour meter reading properly | _____ | _____ |

OPTIONAL GENERATOR ENGINE:

- | | DEALER | OWNER |
|--|--------|-------|
| 56. Crank case oil level at full mark | _____ | _____ |
| 57. Engine water pickup open | _____ | _____ |
| 58. Check heat exchanger fluid level and overflow bottle if supplied | _____ | _____ |
| 59. Bleed air out of line | _____ | _____ |
| 60. Check flow out exhaust | _____ | _____ |
| 61. Hour meter reading properly | _____ | _____ |

RIGGING:

- | | DEALER | OWNER |
|---|--------|-------|
| 62. Mast steaming light OK | _____ | _____ |
| 63. Spreaders properly secured | _____ | _____ |
| 64. Shrouds and stays right length | _____ | _____ |
| 65. Main and jib halyards right length | _____ | _____ |
| 66. Jib fits properly | _____ | _____ |
| 67. Main fits and operates properly | _____ | _____ |
| 68. Topping lift, out haul, reefing system installed properly | _____ | _____ |
| 69. Install windex | _____ | _____ |
| 70. Main sheet and blocks OK | _____ | _____ |
| 71. Jib sheet and blocks OK | _____ | _____ |
| 72. Winch handles fit and winches smooth | _____ | _____ |
| 73. Rigging properly tuned and pinned | _____ | _____ |
| 74. Furling system operational | _____ | _____ |
| 75. Traveler arch ground wire installed | _____ | _____ |

FINAL CHECK:

- | | DEALER | OWNER |
|---|--------|-------|
| 76. All accessory equipment on board | _____ | _____ |
| 77. All loose gear on board | _____ | _____ |
| 78. Owner's manual on board | _____ | _____ |
| 79. Warranty registration form completed and signed | _____ | _____ |
| 80. Owner familiarized with operation and warranty policy | _____ | _____ |
| 81. Boat properly cleaned, interior and exterior | _____ | _____ |
| 82. Owner advised to complete component warranty cards | _____ | _____ |
| 83. All plexiglass hatches and ports free of scratches | _____ | _____ |
| 84. All interior wood free of dents, dings and scratches | _____ | _____ |
| 85. Interior cushions, bedding & curtains clean and free of defects | _____ | _____ |
| 86. Exterior gelcoat free of defects | _____ | _____ |
| 87. Fee of water intrusion above and below the water line | _____ | _____ |
| 88. All electronic equipment calibrated and operational | _____ | _____ |
| 89. Exterior wood free of defects | _____ | _____ |
| 90. Life lines adjusted and secure | _____ | _____ |

BOAT IN WATER:

- | | DEALER | OWNER |
|---|--------|-------|
| 22. Check for leaks: rudder post, shaft log, stuffing box, strut bolts and keel bolts | _____ | _____ |
| 23. Check for thru-hull fitting leaks: engine pickup, galley sink drain, toilet pickup, toilet discharge, knot/depth, A/C, refrigerator | _____ | _____ |
| 24. Check windows and deck hardware for leaks | _____ | _____ |
| 25. Check opening ports and hatches for leaks | _____ | _____ |
| 26. Check rub rail and deck joints for leaks | _____ | _____ |
| 27. 110 dockside cord and receptacles OK | _____ | _____ |
| 28. Toilet operates OK, intake open, outlet open, pumps OK | _____ | _____ |
| 29. Pressure water system operates OK (let pressure stand for 15 minutes to see if pump goes on) | _____ | _____ |
| 30. Hot water heater operation OK | _____ | _____ |
| 31. Check stove system for leaks per manufacturer's instructions | _____ | _____ |
| 32. With fuel tank full, no leaks at fill pipe, overflow vent or any fuel line connections or gauge | _____ | _____ |
| 33. Drawers work smoothly | _____ | _____ |
| 34. Doors work smoothly | _____ | _____ |
| 35. Engine aligned .004 or less | _____ | _____ |
| 36. Check and tighten all engine mount attachments | _____ | _____ |
| 37. Check and tighten all engine flange and coupling bolts | _____ | _____ |

BEFORE STARTING ENGINE:

- | | DEALER | OWNER |
|--|--------|-------|
| 38. Throttle control cable travel and brackets OK | _____ | _____ |
| 39. Clutch control cable travel and brackets OK | _____ | _____ |
| 40. Crank case oil level at full mark | _____ | _____ |
| 41. Transmission oil level at full mark | _____ | _____ |
| 42. Engine shut off OK | _____ | _____ |
| 43. Engine water pickup OK | _____ | _____ |
| 44. Bleed air out of fuel line | _____ | _____ |
| 45. Check heat exchanger fluid level and overflow bottle | _____ | _____ |

Dealer Signature: _____ Date: _____

I have received, read and understand completely the Marlow-Hunter Limited Warranty for my boat.

Owner Signature: _____ Date: _____

DEALER COMMENTS (Refer to check list by item #)

Remove 2nd & 3rd Copies and Forward Form Intact.

DISTRIBUTION: Original – Marlow-Hunter Service Dept., Canary – Owner, Pink – Dealer
FORM #300-16/0112

Limited Warranty

WARRANTY REGISTRATION



MARLOW-HUNTER, LLC
P.O. BOX 1030, HWY. 441
ALACHUA, FL 32615
(386) 462-3077 Fax (386) 462-4077

Year _____ Engine Model & Serial # _____

Model _____ Generator Model & Serial # _____

Hull # _____

Date Delivered to Dealer _____ Date Delivered to Customer _____

OWNER

Street _____ E-mail Address _____

City & State _____ Zip Code _____

Phone: Home _____ Work _____ Fax _____

Boat Name _____ Location of Boat (Zip-code only) _____

DEALER

Dealer Code _____

Street _____ Dealer Salesperson _____

City & State _____ Zip Code _____

Phone _____ Fax _____

FINAL CHECK OUT:

- OWNER FAMILIARIZED WITH HUNTER WARRANTY & OWNERSHIP RESPONSIBILITIES.
- OWNER FAMILIARIZED WITH DEALERSHIP WARRANTY AND SERVICE POLICIES.
- OWNER RECEIVED THE HUNTER OWNER'S MANUAL, ENGINE AND ACCESSORY MANUALS.
- OWNER RECEIVED & APPROVED PRE-DELIVERY SERVICE RECORD.

I understand that it is my responsibility to have read and familiarized myself with the contents of the Marlow-Hunter Owner's Manual, the various engine and component manuals, and the Marlow-Hunter Limited Warranty.

OWNER'S SIGNATURE _____ DATE _____

BOAT INSPECTION – OWNER FAMILIARIZED WITH THE OPERATION OF:

- | | | |
|---|--|--|
| <input type="checkbox"/> FUEL SYSTEM | <input type="checkbox"/> ENGINE AND DRIVE SYSTEM | <input type="checkbox"/> STEERING SYSTEM |
| <input type="checkbox"/> WATER SYSTEM | <input type="checkbox"/> SAFETY SYSTEMS | <input type="checkbox"/> MAINTENANCE & UPKEEP |
| <input type="checkbox"/> AC/DC ELECTRICAL SYSTEM | <input type="checkbox"/> OPERATION OF WASTE SYSTEM | <input type="checkbox"/> HANDLING & OPERATION |
| <input type="checkbox"/> STANDING & RUNNING RIGGING | <input type="checkbox"/> STOVE OPERATION | <input type="checkbox"/> OWNER SPECIFIED OPTIONS |

I understand that it is my responsibility to read and familiarize myself with the contents of the Marlow-Hunter Owner's Manual, the various engine and component manuals, and the Marlow-Hunter, LLC Limited Warranty. The Marlow-Hunter, LLC Limited Warranty gives you specific rights. You may also have other rights which vary from state to state. To activate your warranty, please complete this form and return it to MARLOW-HUNTER, LLC. within 10 days of delivery.

OWNER'S SIGNATURE _____ DATE _____

DEALER'S SIGNATURE _____ DATE _____

WHITE – MARLOW-HUNTER

YELLOW-DEALER

PINK-OWNER

10/2012

Limited Warranty

November 6, 2013

Mr. John Smith
1456 Joy Street
Sarasota, FL 34266

Dear Mr. Smith,

Thank you for providing written notice of transfer of ownership. We are pleased you have selected a Hunter sailboat and we will make every effort to assure Hunter ownership will be a satisfying experience for you.

Based on the information you have provided, we are pleased to notify you of the expiration dates of the limited warranties.

- The limited two-year New Boat warranty expires (d) _____.
- The limited five-year Hull Structure and Bottom Finisher warranty expires (d) _____.

Should you require assistance at any time during ownership, we encourage you to contact your Hunter dealer or to call us directly at 336-462-3077.

Please confirm the information at the bottom of the page and advise us if any corrections are required.

Customer Service Manager

Hull No: _____ Model: _____

Telephone: (H) _____ (C) _____

Date of Purchase: _____

Purchased From:

Name: _____

Address: _____

City/State: _____ Zip: _____

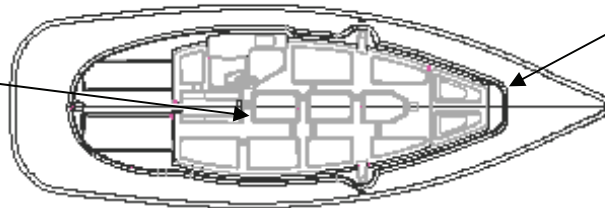
() Private Owner

() Dealer

Limited Warranty

GRAPHICAL EXPLANATION OF WARRANTY COVERAGE - KEEL BOATS

Internal fiberglass pan and fiberglass grid system are covered by the five-year limited warranty.



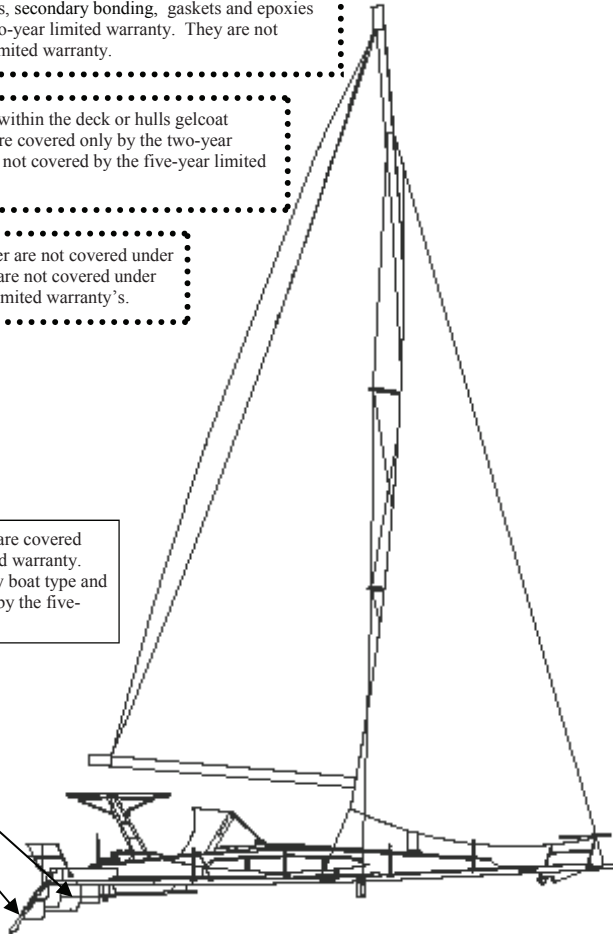
All fiberglass tabbing, overlays, epoxy and secondary bonding are covered only by the two-year limited warranty. They are not covered by the five-year limited warranty.

Footnote 1. All wooden bulkheads, modular components, floors, floor supports, paneling, trim, coring materials, faceplates, countertops, fiberglass tabbing, overlays, secondary bonding, gaskets and epoxies are covered only by the two-year limited warranty. They are not covered by the five-year limited warranty.

Footnote 2. Voids located within the deck or hulls gelcoat surface or build laminate are covered only by the two-year limited warranty. They are not covered by the five-year limited warranty.

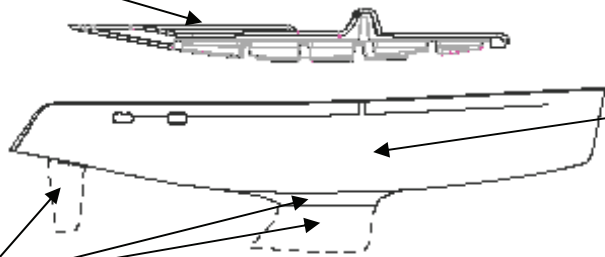
Footnote 3. Keel and rudder are not covered under the blister warranty. They are not covered under the two-year or five-year limited warranty's.

Deck and deck floor-pans are covered only by the two-year limited warranty. Floor-pan sizes will vary by boat type and size. They are not covered by the five-year limited warranty.



Internal fiberglass pan and fiberglass grid system are covered by the five-year limited warranty.

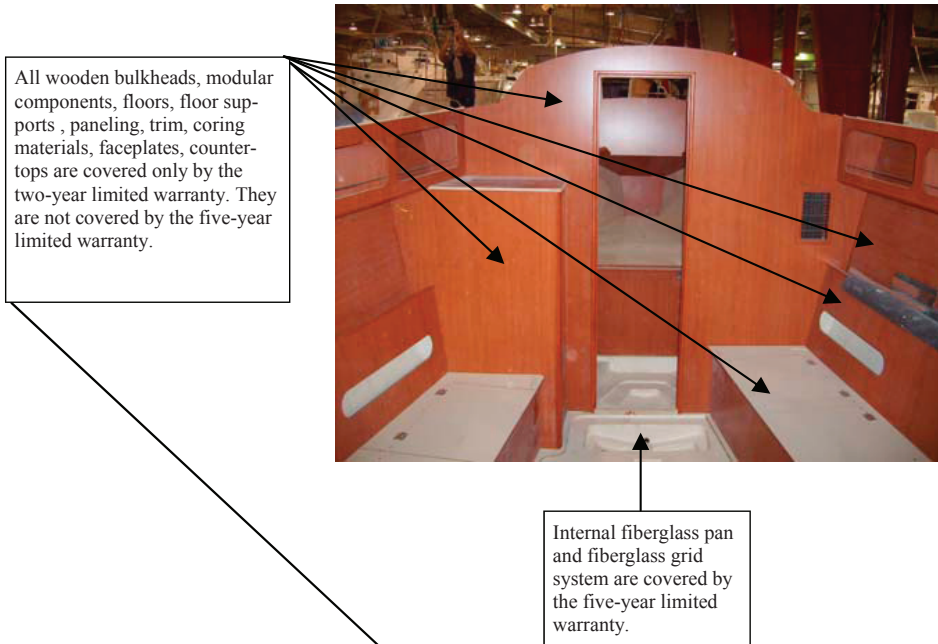
Rudder and keel are excluded from all warranties. Keel leaks at the attachment point are excluded from all warranties.



The fiberglass hull component is covered by the five-year limited warranty. Installed items such as (but not limited to) ports, shafting, thru-hulls, vents and struts are not covered by the five-year limited warranty. The rudder and keel are excluded from all warranties.

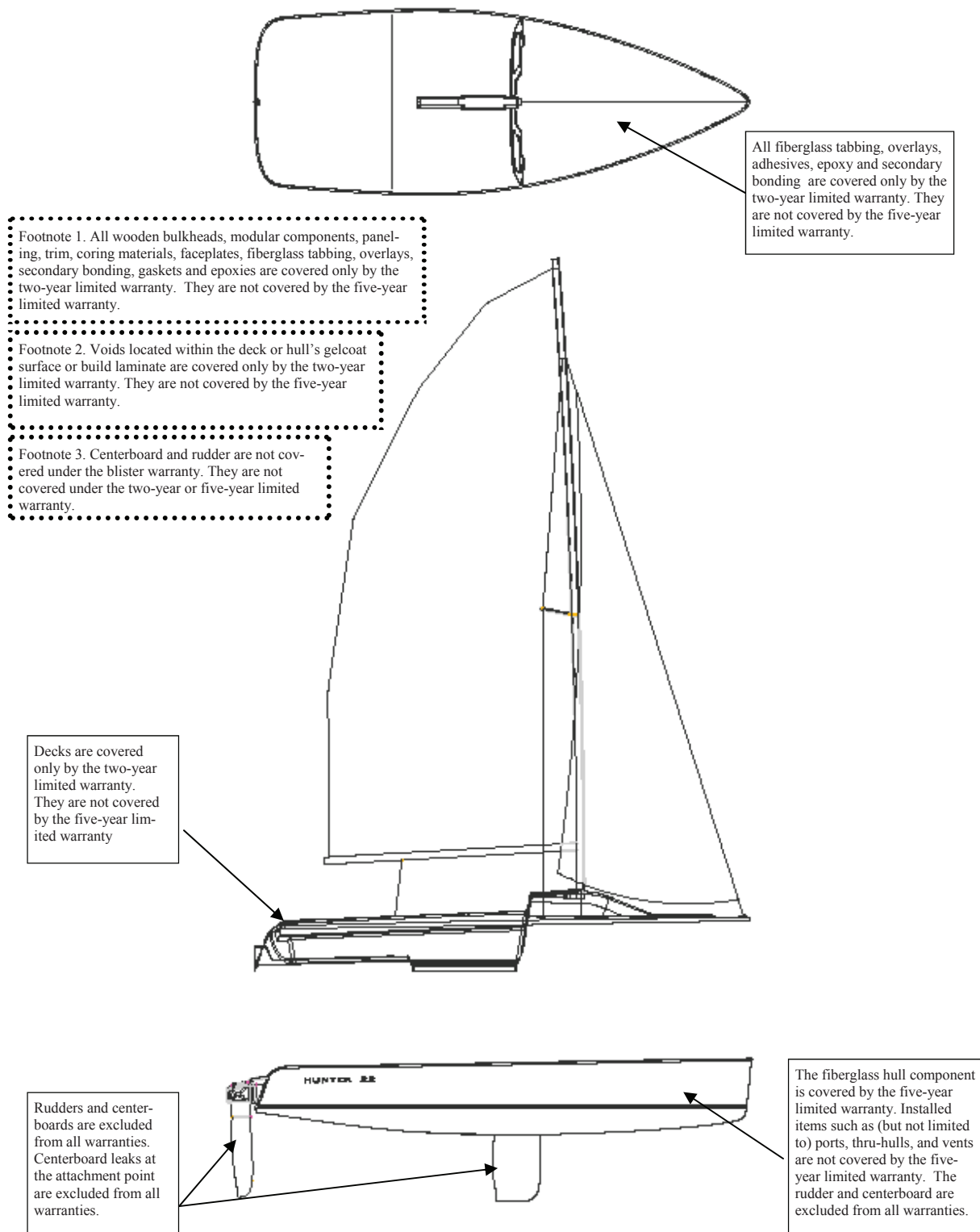
Limited Warranty

GRAPHICAL EXPLANATION OF WARRANTY COVERAGE - KEEL BOATS



Limited Warranty

GRAPHICAL EXPLANATION OF WARRANTY COVERAGE—TRAILERABLES



Limited Warranty

GRAPHICAL EXPLANATION OF WARRANTY COVERAGE—TRAILERABLES

All wooden bulkheads, modular components, supports, paneling, trim, coring materials and faceplates are covered only by the two-year limited warranty. They are not covered by the five-year limited warranty.



All fiberglass tabbing, overlays, secondary bonding, gaskets and epoxies are covered only by the two-year limited warranty. They are not covered by the five-year limited warranty.

