

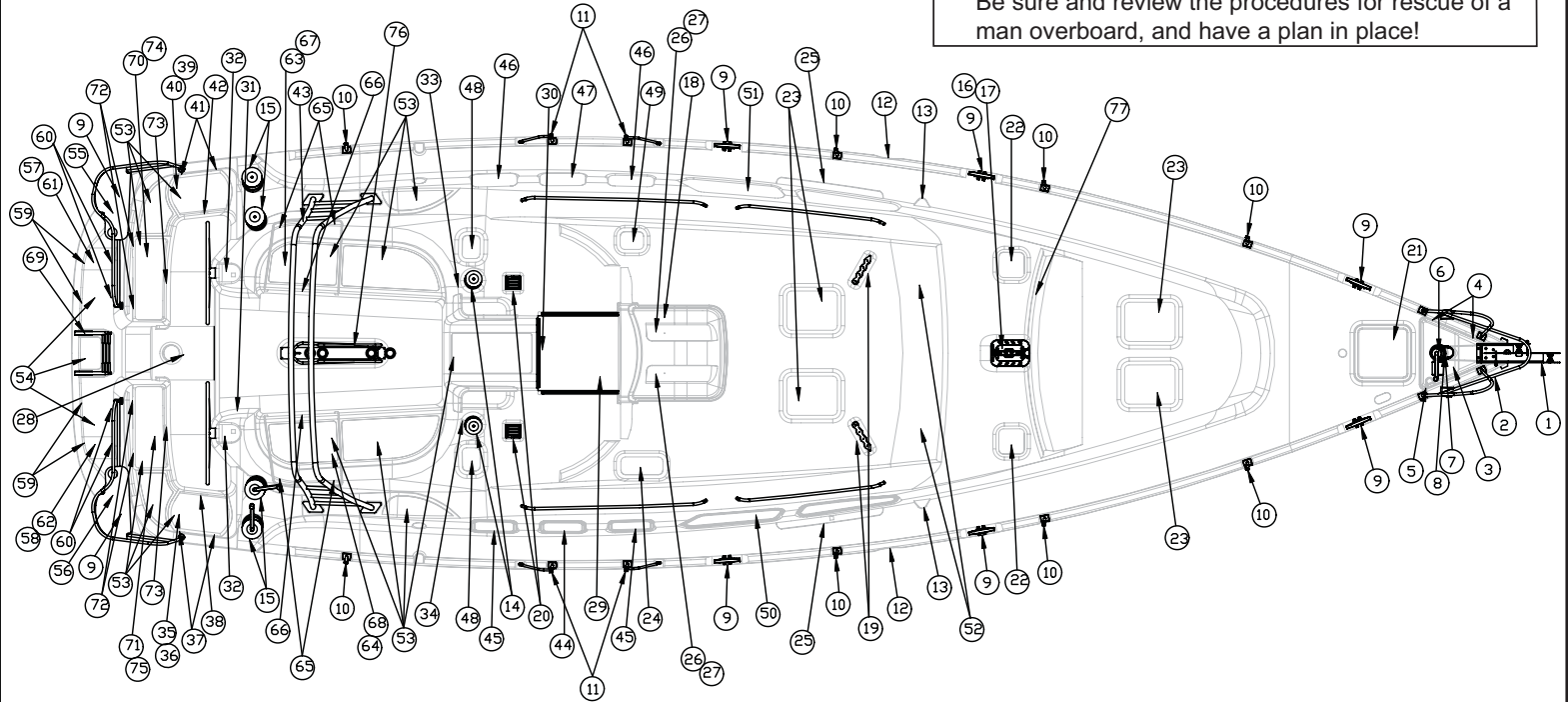
H49 DECK HARDWARE LIST

Hunter 49 Deck Hardware

⚠ CAUTION ⚠

Always be aware of your surroundings when on the deck!
Area's of the deck may be very slippery when wet.
This could result in a fall, or a "Man Overboard"!
Be sure and review the procedures for rescue of a man overboard, and have a plan in place!

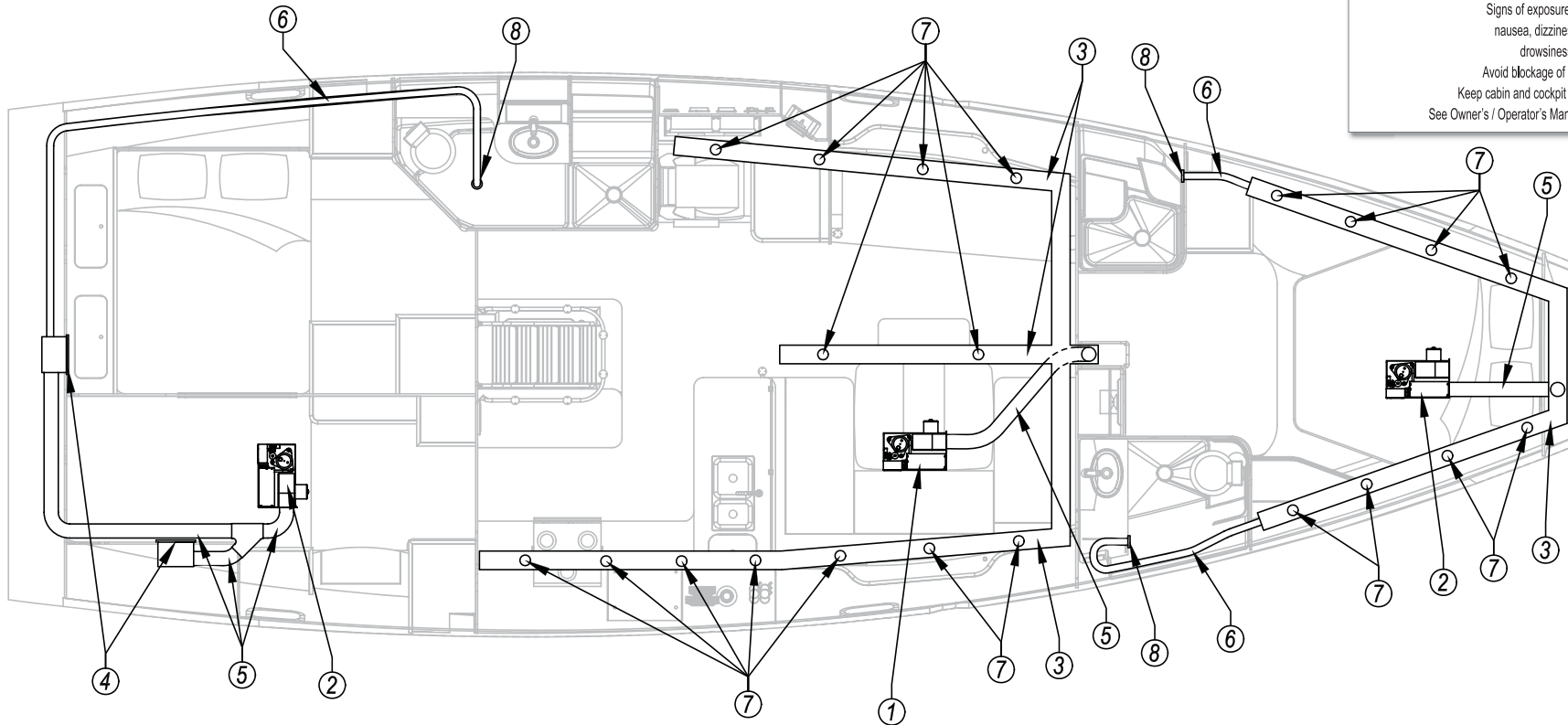
Item Label	Qty	Description
1	1	Bowroller Assembly
2	1	Bowrail with 4 stanchion bases
3	1	Anchorlid (RTM part)
4	2	Anchorlid Hinges
5	1	Anchorlid latch with striker plate
6	1	Windlass
7	1	Anchorwell U-Bolt
8	1	Anchorwell Cleat
9	8	Cleats
10	8	2-line Stanchion with base
11	4	Gate Stanchion with base
12	2	Outer Chainplate
13	2	Inner Chainplate
14	2	Size 44 Winch
15	4	Size 54 Winch
16	1	Mast Step
17	1	Compression Post
18	1	Seahood (small part)
19	2	Deck Organizers
20	2	Sheettoppers
21	1	Size 60 Hatch (smoked)
22	2	Size 10 Hatch (frosted)
23	4	Size 54 Hatch (smoked)
24	1	Size 41 Hatch (smoked)
25	4	Jib Track Lead System (1tm)
26	2	Dorade Vent
27	2	Dorade deck plate
28	1	Quad Cover
29	1	Companionway Slider Asm
30	1	Companionway Drop-Board Asm
31	1	Engine Panel
32	2	Steering System
33	1	Line Locker - port (RTM part)
34	1	Line Locker - stbd (RTM part)
35	1	LPG Locker liner (small part)
36	1	LPG Locker lid (RTM part)
37	2	LPG Hinges
38	1	LPG Lid Latch
39	1	Storage Locker Liner (small part)
40	1	Storage Locker Lid (RTM part)
41	2	Storage Locker lid hinges
42	1	Storage Locker lid latch
43	1	Arch
44	1	Size 3 Portlight (smoked opening)
45	2	Size 1 Portlight (smoked opening)
46	2	Size 1 Portlight (frosted opening)
47	1	Size 3 Portlight (frosted opening)
48	2	Size 03 Hatch (smoked)
49	1	Size 03 Hatch (frosted)
50	1	Custom Portlight STBD (fixed)
51	1	Custom Portlight Port (fixed)
52	2	Windshield custom plexiglass (STBD/Port)
53	1	Cockpit Flexiteak
54	1	Transom Flexiteak
55	1	Sternrail - port
56	1	Sternrail - stbd
57	1	Transom Lid - port (RTM part)
58	1	Transom Lid - stbd (RTM part)
59	4	Locker Lid Hinges
60	4	Locker Lid Latches
61	1	Transom storage liner - port (small part)
62	1	Transom storage liner - stbd (small part)
63	1	Gullwing Locker Lid - port (RTM part)
64	1	Gullwing Locker Lid - stbd (RTM part)
65	4	Locker Lid Hinges
66	2	Locker Lid Hatch
67	1	Gullwing Storage Liner - port (small part)
68	1	Gullwing Storage Liner - stbd (small part)
69	1	Transom Swim Ladder (16" wide)
70	1	Helm Seat Locker Lid - port (RTM part)
71	1	Helm Seat Locker Lid - stbd (RTM part)
72	4	Locker Lid Hinges
73	2	Locker Lid Latch
74	1	Helm Seat Storage Liner - port (small part)
75	1	Helm Seat Storage Liner - stbd (small part)
76	1	Cockpit Table Assembly
77	1	Self-Tacking Jib Track Assembly



Hunter 49 Ventilation (Air Conditioning)

! DANGER !

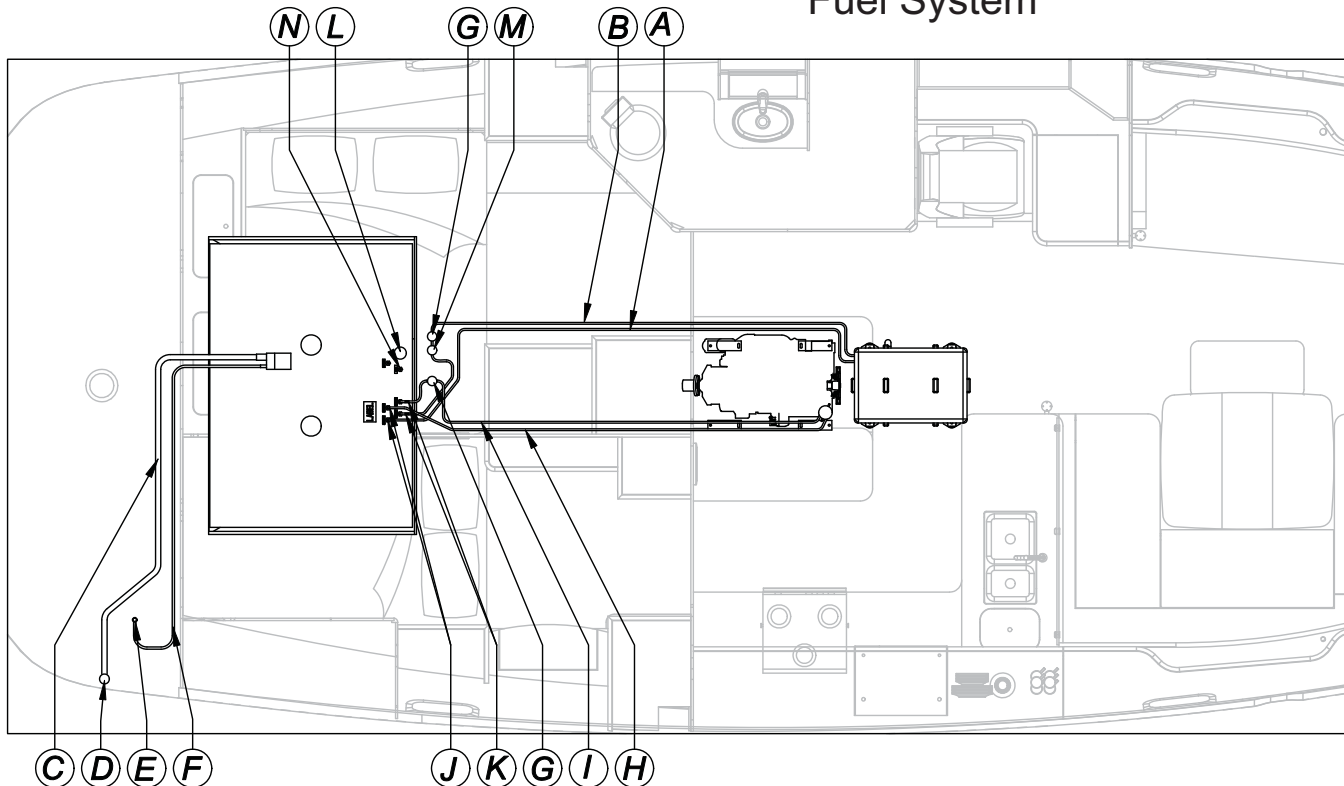
Direct exposure to Carbon Monoxide will cause brain damage or death!
Carbon Monoxide is colorless, odorless, and dangerous!
All engines, generators, and open flame appliances produce Carbon Monoxide!
Signs of exposure include nausea, dizziness and drowsiness!
Avoid blockage of exhausts!
Keep cabin and cockpit well ventilated!
See Owner's / Operator's Manuals for more details!



- | | |
|----------------------------------|--------------------|
| 1. 18K BTU AIR CONDITIONER | 5. 5"(12.7cm) DUCT |
| 2. 10K BTU AIR CONDITIONER | 6. 2"(5.08cm) DUCT |
| 3. HARD DUCT CHANNEL | 7. 3"(7.62cm) VENT |
| 4. 5"(12.7cm) X 10"(25.4cm) VENT | 8. 2"(5.08cm) VENT |



Hunter 49 Fuel System



- | | |
|--|---|
| A GENERATOR RETURN FUEL LINE 1/4" (.66cm) | H ENGINE FUEL RETURN LINE 5/16" (.79cm) |
| B GENERATOR FUEL SUPPLY LINE 1/4" (.66cm) | I ENGINE FUEL SUPPLY LINE 5/16" (.79cm) |
| C FUEL FILL HOSE 1-1/2" (3.8cm) | J ENGINE AND GENERATOR FUEL RETURN PORTS |
| D FUEL FILL (ON DECK) | K FUEL CUTOFF VALVES |
| E FUEL VENT (ON DECK) | L FUEL LEVEL SENSOR |
| F FUEL VENT HOSE 5/8" (1.6cm) | M GENERATOR FUEL PUMP |
| G FUEL FILTER/WATER SEPARATOR | N OPTIONAL HEATER FUEL SUPPLY LINE |

⚠ DANGER ⚠

California Proposition 65 Diesel Engine Exhaust and some of its components are known by the state of California to cause cancer, birth defects, and other reproductive harm.

Leaking fuel is a fire and explosion hazard. Avoid serious injury or death from fire or explosion.

NO SMOKING

Keep both sight gauge valves closed except when checking fuel level.

Do not mistake the water fill, waste pumpout, or even a rod holder for the Fuel Fill, ensure you are placing fuel in the correct deck fitting.

Before starting the engines, open the engine compartment and check for fuel smell.

*If you smell fuel, do not start the engine; get everyone off the boat and get trained help to find and fix the problem.

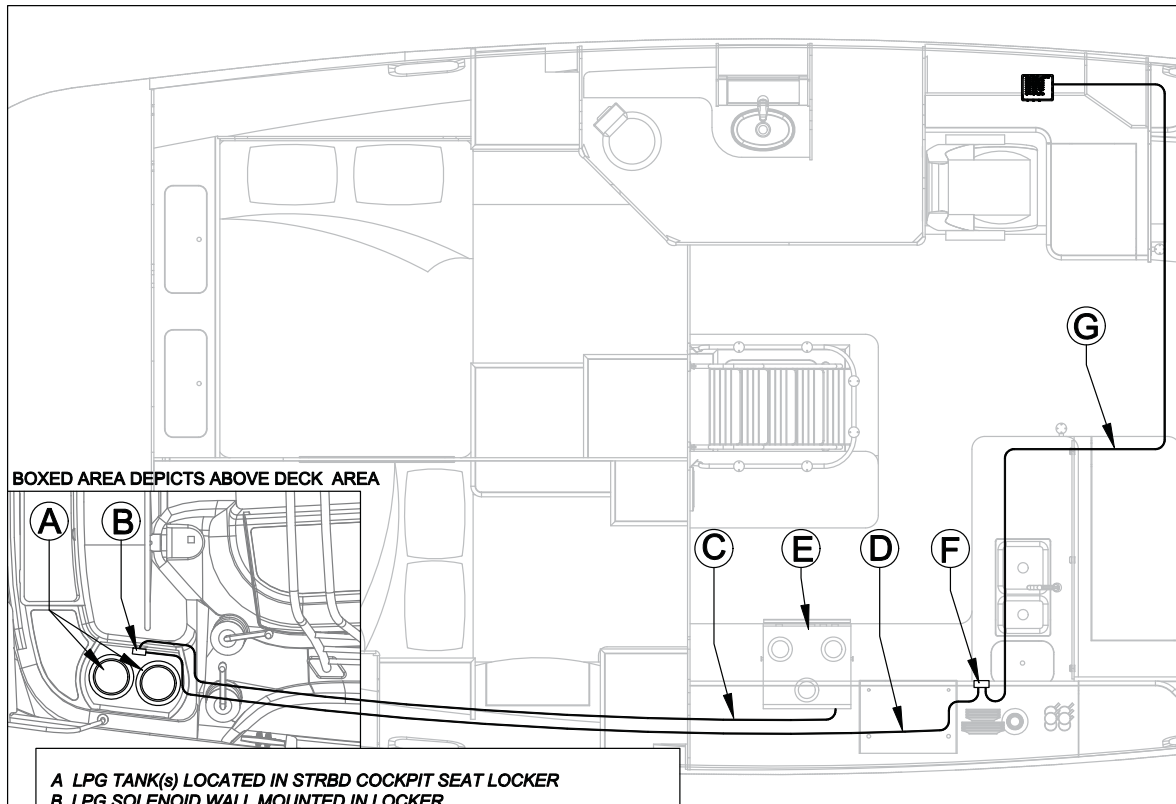
⚠ CAUTION ⚠

The "Fuel System" chapter 5, and "Boating Safety" chapter 4 both contain important fuel related information. Take the time to read all the fuel related information in your Operator's Manual, Owner's Manual, as well as the O.E.M. manuals.

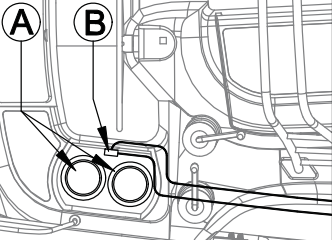


Hunter 49

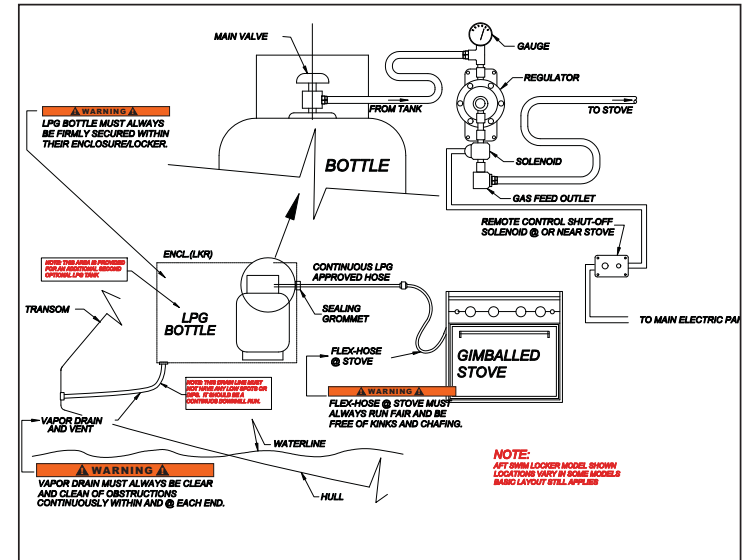
LPG(Liquified Petroleum Gas) Lines Layout



BOXED AREA DEPICTS ABOVE DECK AREA

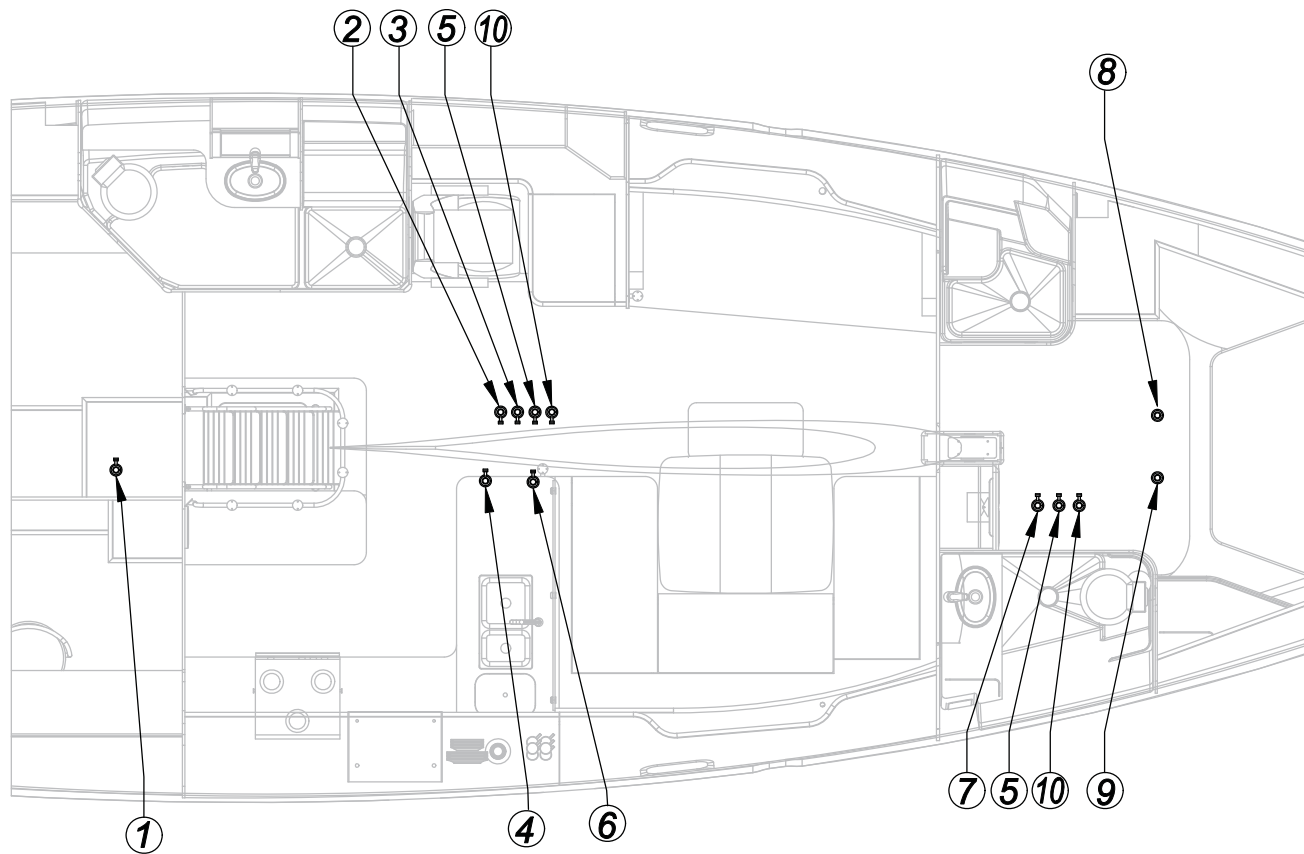


- A LPG TANK(S) LOCATED IN STRBD COCKPIT SEAT LOCKER
- B LPG SOLENOID WALL MOUNTED IN LOCKER
- C RUBBER GAS LINE HOSE (COPPER IN CERTAIN REGIONS)
- D POWER LINE FROM LPG CONTROL SWITCH
- E GIMBALLED STOVE
- F REMOTE CONTROL SHUT-OFF LOCATED IN GALLEY FACE
- G POWER FROM DC DISTRIBUTION BOX TO REMOTE SWITCH



Hunter 49

Bottom Thru Hulls

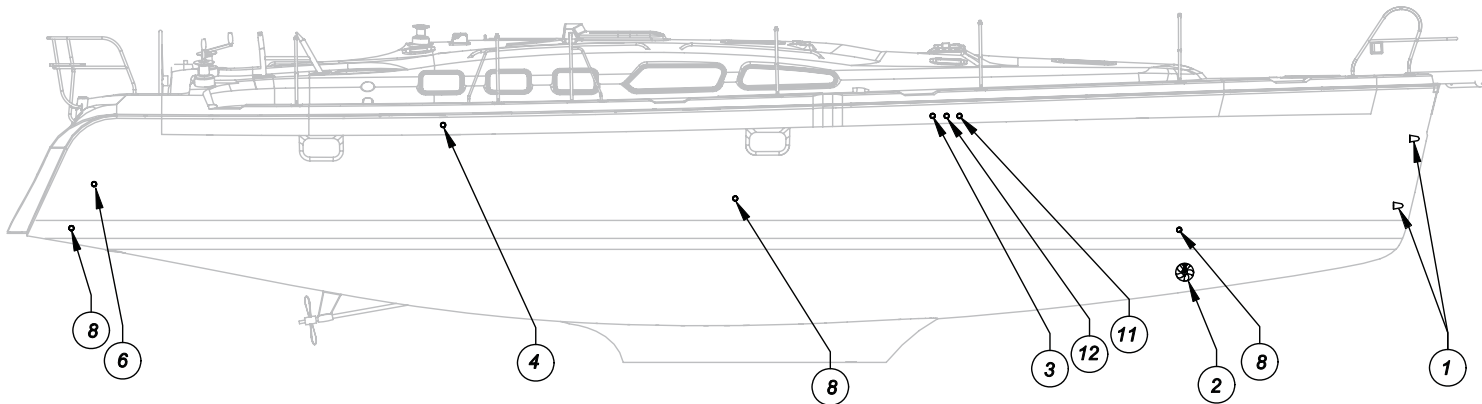


1. GENERATOR EXHAUST DISCHARGE
2. ENGINE PICK UP
3. GENERATOR PICK UP
4. GALLEY/AFT VANITY DISCHARGE
5. MACERATOR DISCHARGE
6. AIR CONDITIONER PICK UP
7. FWD VANITY DISCHARGE
8. KNOT TRANSDUCER
9. DEPTH TRANSDUCER
10. OPT OVERBOARD WASTE DISCHARGE

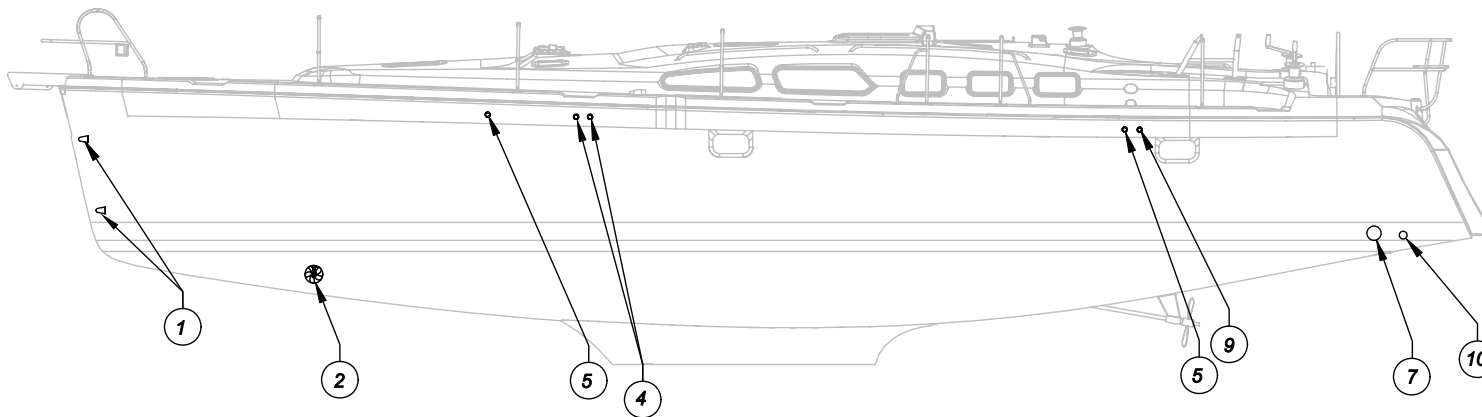


Hunter 49

Thru Hulls Port and Stbd

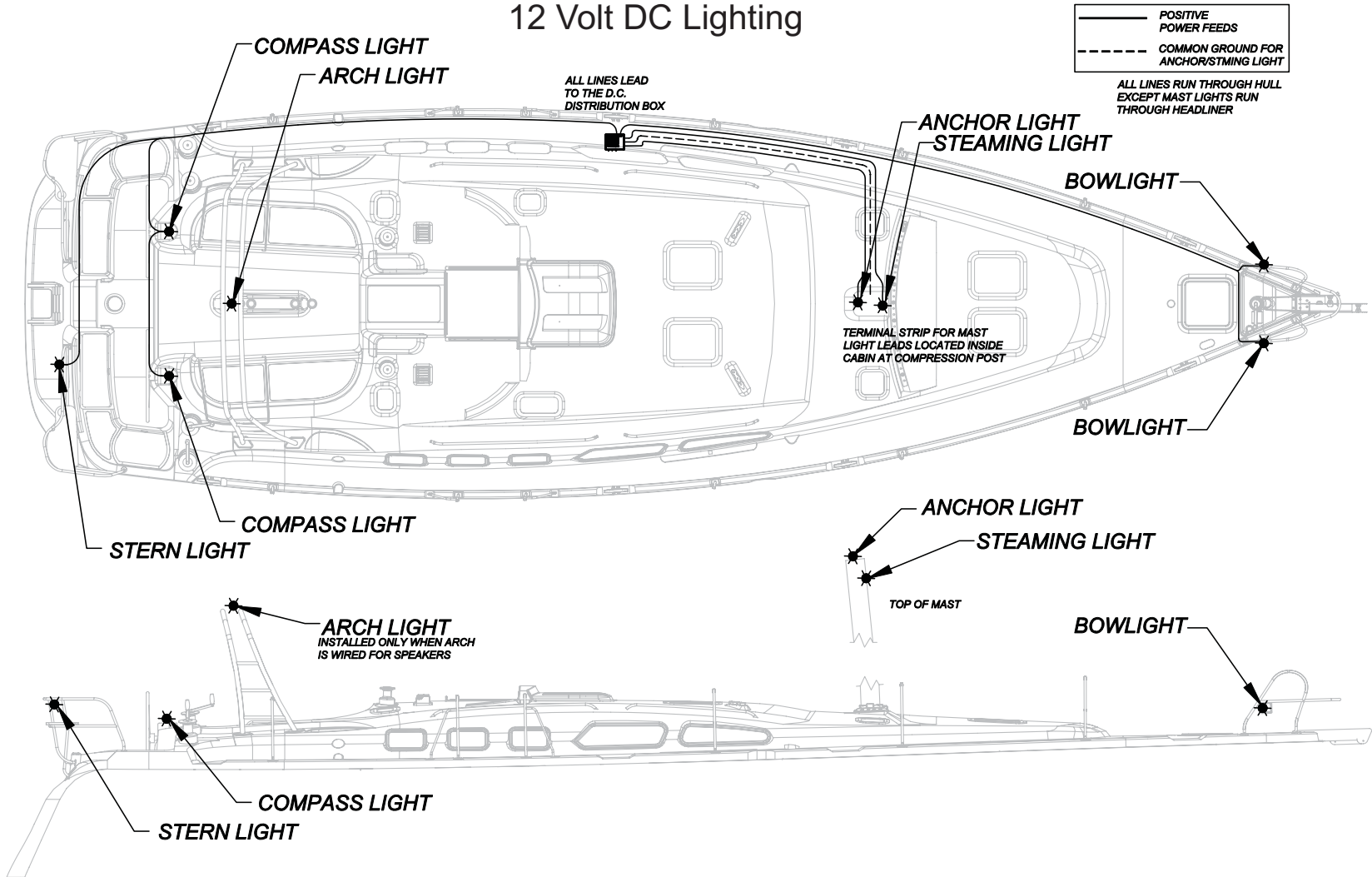


1. ANCHORWELL DRAIN
2. BOWTHRUSTER (OPT)
3. H2O HEATER DISCHARGE
4. H2O TANK VENT
5. WASTE TANK VENT
6. LPG DRAIN VENT
7. ENGINE EXHAUST
8. AIR CONDITIONING DISCHARGE
9. AFT SUMP PUMP DISCHARGE
10. GENERATOR EXHAUST
11. BILGE PUMP DISCHARGE
12. FWD SUMP PUMP DISCHARGE



Hunter 49

12 Volt DC Lighting



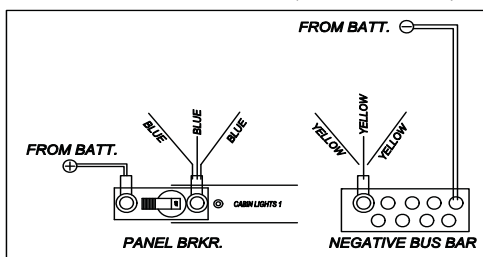
Hunter 49

12 Volt DC Deck Lighting

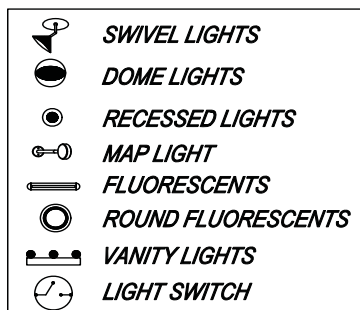
CAUTION

Always be aware of your surroundings when on the deck. Area's of the deck may be very slippery when wet. This could result in a fall, or a "Man Overboard"!

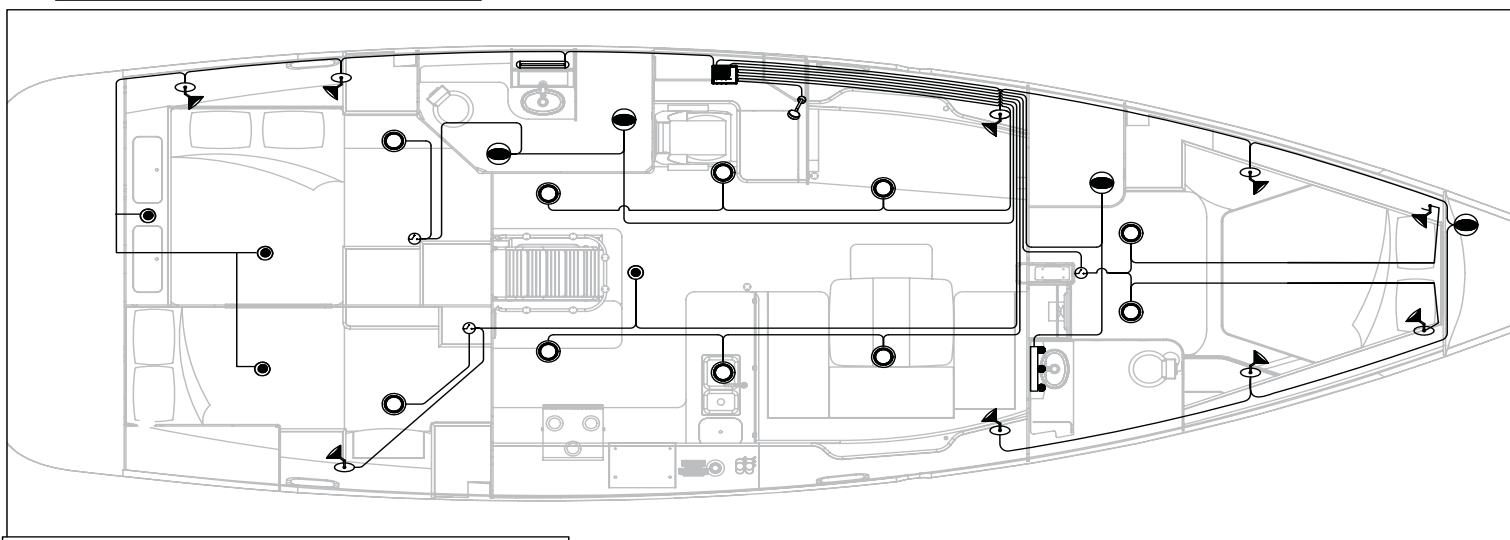
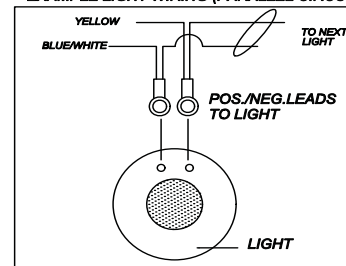
EXAMPLE SWITCH PANEL WIRING (PARALLEL CIRCUITS)



EACH CIRCUIT IN PARALLEL. BLUE (LOAD TO BREAKER) AND YELLOW NEGATIVE TO NEGATIVE BUS BAR (SEE EX.)



EXAMPLE LIGHT WIRING (PARALLEL CIRCUIT)

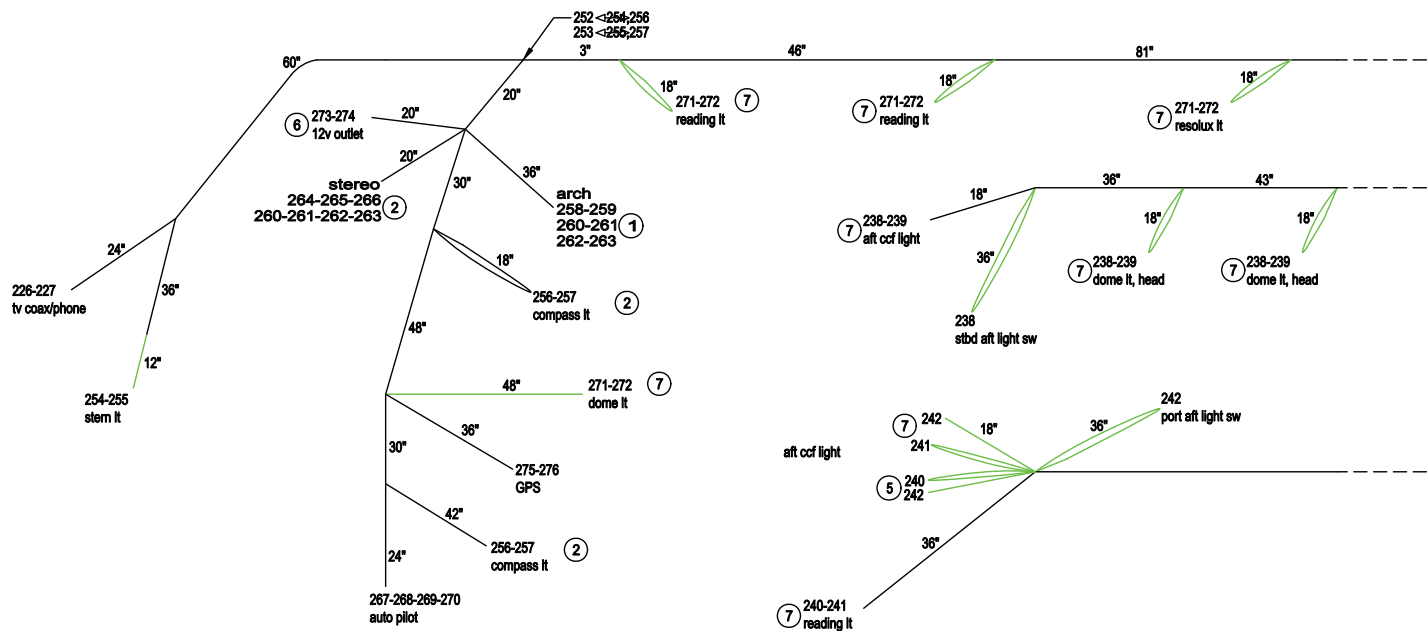


A TO ARCH LIGHT (PROVIDED WITH COCKPIT STEREO OPTION)
 B DISTRIBUTION BOX



Hunter 49 DC Hull Harness

NOTE: CONDUIT COMPLETELY EXCEPT AS SHADED.



CONN. D1	WIRE #	CONN. D2	WIRE #	CONN. ARCH	WIRE #
1	250	1	200	1	258
2	245	2	273	2	259
3	246	3	229	3	260
4	247	4	231	4	261
5	243			5	262
6	238			6	263
7	240				
8	264				
9	266				
10	271				
11	258	CONN. D1	Deutsch DT 12-pin, female housing w/male pins		
12	252	CONN. D2	Deutsch DTP 4-pin, female housing w/male pins		
		ARCH	Deutsch DT 6-pin, female housing w/male pins		

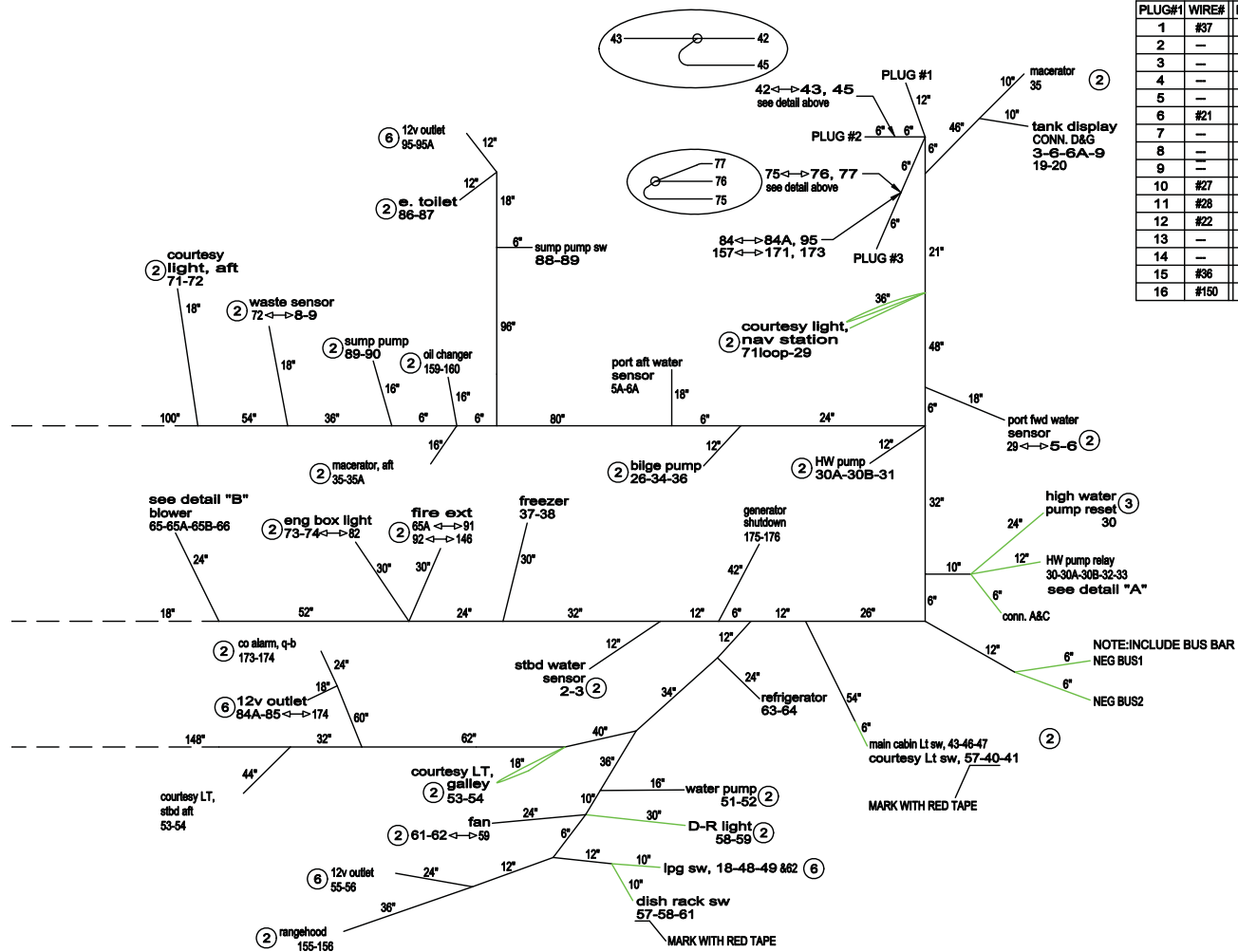
CONNECTOR TYPES

- LEGEND -
- 1 - SEE CONNECTOR LIST
 - 2 - BARREL (BUTT SPLICE)
 - 3 - #10 RING TERMINAL
 - 4 - 1/4" RING TERMINAL
 - 5 - CLOSED-END CONNECTOR
 - 6 - 1/4" QUICK CONNECT
 - 7 - BULLET PLUG

NOTE: RG-6 COAX CABLE INSTALLED WITH MALE TYPE-F CONNECTORS.

Hunter 49

DC Hull Harness (cont)



PLUG#1	WIRE#	PLUG#2	WIRE#	PLUG#3	WIRE#
1	#37	1	#42	1	#86
2	—	2	#40	2	#71
3	—	3	#41	3	#73
4	—	4	#46	4	#75
5	—	5	#45	5	#76
6	#21	6	—	6	#77
7	—	7	#51	7	#88
8	—	8	#53	8	#78
9	—	9	#55	9	#80
10	#27	10	#63	10	—
11	#28	11	—	11	#84
12	#22	12	—	12	—
13	—	13	—	13	—
14	—	14	#155	14	#157
15	#36	15	#65	15	—
16	#150	16	—	16	—

NEG BUS1

- 2-5-5A-8-20
- ③ 25-31-34-35A-38
- 47-49-50-52-54
- ④ 70

NEG BUS2

- 56-64-66-74
- ③ 79-85-87-90-92
- 95A-150-156-160
- ④ 70

NOTE: INCLUDE BUS BAR

NEG BUS1

NEG BUS2

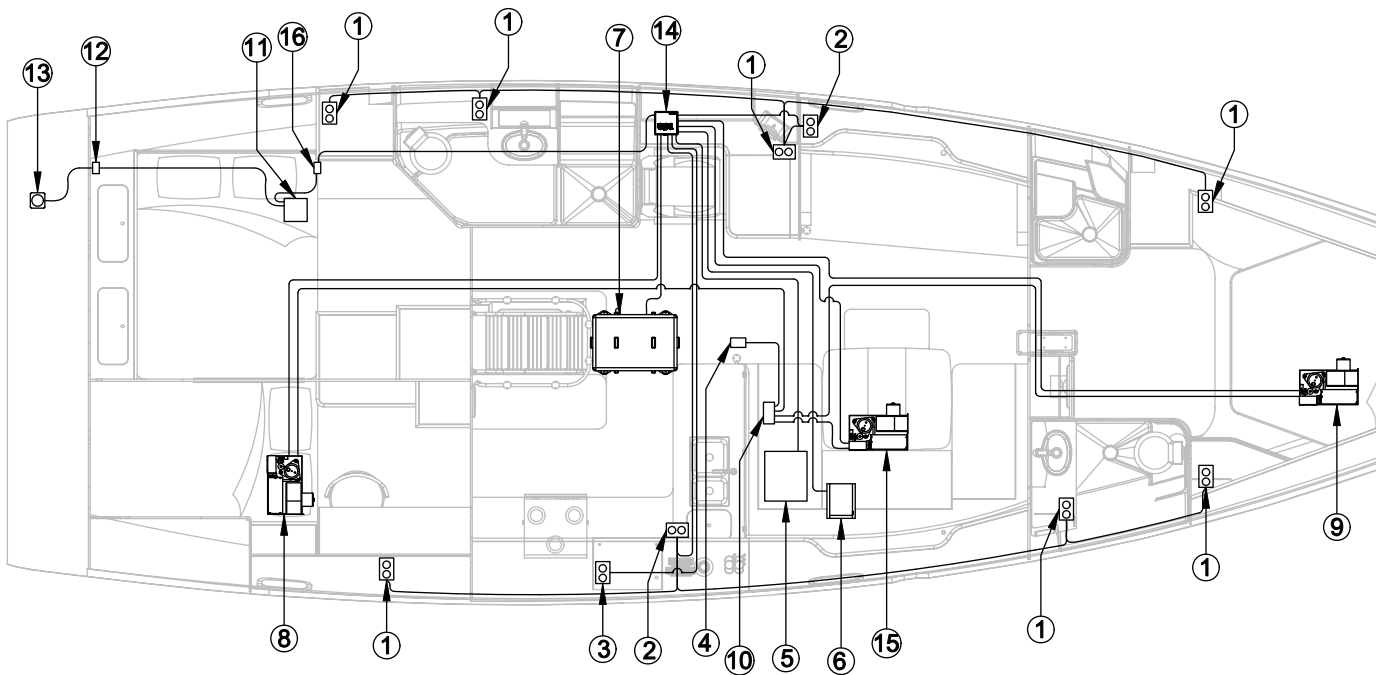
MARK WITH RED TAPE



Hunter 49

AC Electric

- | | |
|-------------------------------|-----------------------------------|
| 1. OUTLETS | 9. FWD AIR CONDITIONER |
| 2. GFCI OUTLETS | 10. AIR CONDITIONER PUMP |
| 3. MICROWAVE OUTLET | RELAY CONTROL |
| 4. AIR CONDITIONER WATER PUMP | 11. TRANSFORMER |
| (ONLY OUTLET ON CIRCUIT) | 12. SHORE POWER BREAKER |
| 5. WATER HEATER | 13. SHORE POWER INLETS |
| 6. INVERTER | 14. AC DISTRIBUTION BOX |
| 7. GENERATOR | 15. MID AIR CONDITIONER |
| 8. AFT AIR CONDITIONER | 16. SECONDARY TRANSFORMER BREAKER |



⚠ DANGER ⚠

Never work on an energized circuit, Always treat any circuit as if it were live!

Electricity cannot be detected without specialized test equipment. Never think you know whether a circuit is "live", always have qualified, competent professionals inspect or make repairs to your electrical systems.

Always run the blowers for at least four minutes before starting any engines.

Internal combustion engines produce carbon monoxide, a dangerous, poisonous gas. Be sure and read the boating safety chapter concerning Carbon Monoxide before starting any engines.

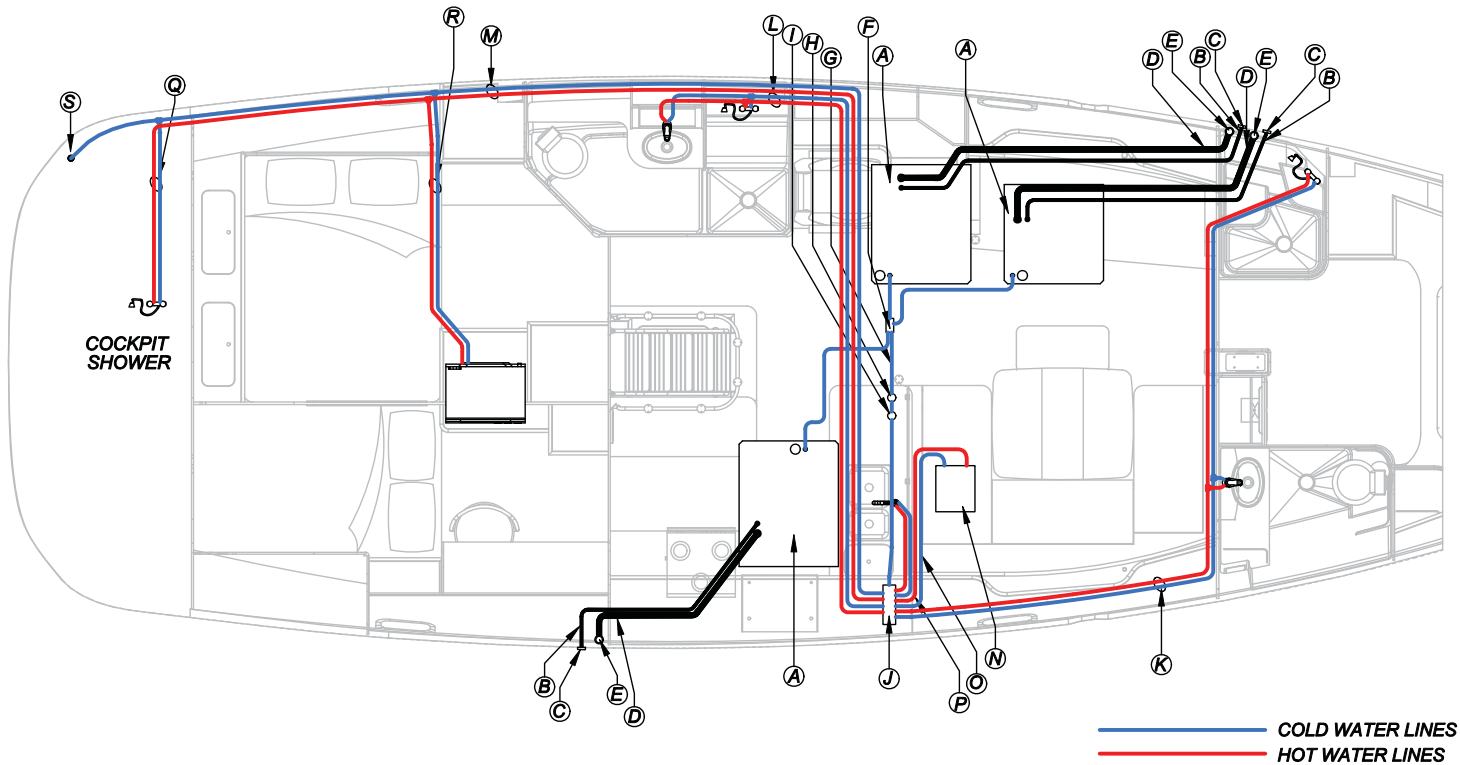
Alterations or extensions to the electrical system can cause electrical shock or fire.

Only trained, competent, and certified electricians should perform any electrical maintenance, work, or changes to your boats electrical system.



Hunter 49

Fresh Water Layout



⚠ WARNING ⚠

Allowing your boat to stay connected to dockside water supply while unattended, could result in a sunken boat.
A major leak or break in the system could flood the bilges, excess water in the bilges could, flood the batteries and result in your boat sinking.

Before connecting to a dockside water source, make certain the water is suitable for drinking. Water that may be of questionable quality could result in serious illness or death.

Hydrogen gas may form in a water heater if not used. You should always open the valves!

Do not smoke or use electrical appliances for several minutes before use.

⚠ CAUTION ⚠

Make sure that the water heater is full before energizing, bleed off any air by opening the hot water valve, close only when there is a steady flow of water, this will bleed the hot water system of air. Failure to follow these instructions could result in damage to the heating elements in your water heater.

- | | | | | |
|------------------|------------------------|-----------------------------------|--|---|
| Ⓐ WATER TANK | Ⓕ ISOLATOR VALVE | Ⓚ FORWARD VANITY AND SHOWER | Ⓞ COLD LINE TO WATER HEATER | Ⓡ HOT & COLD LINES TO OPTIONAL WASHER/DRYER |
| Ⓑ TANK VENT HOSE | Ⓖ LINE OUT TO MANIFOLD | Ⓛ AFT VANITY AND SHOWER | Ⓟ HOT LINE FROM WATER HEATER TO MANIFOLD | Ⓢ SHORE INLET |
| Ⓒ TANK VENT | Ⓡ WATER FILTER | Ⓜ COCKPIT SHOWER AND WASHER/DRYER | Ⓠ HOT & COLD LINES TO COCKPIT SHOWER | |
| Ⓓ TANK FILL HOSE | Ⓢ WATER PUMP | Ⓝ WATER HEATER | | |
| Ⓔ TANK FILL | Ⓣ WATER MANIFOLD | | | |

ALL WATER LINES ARE 15mm TUBING

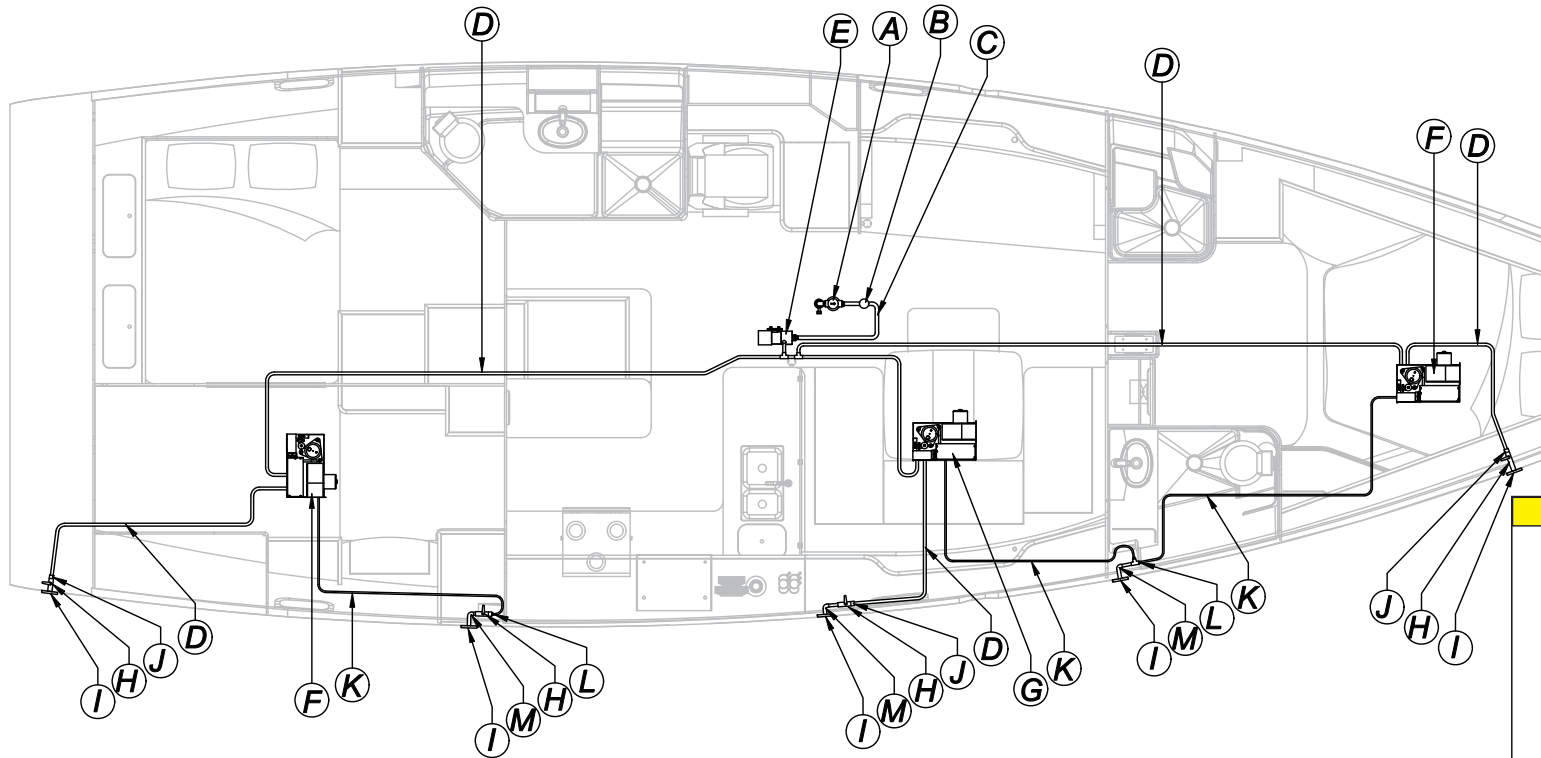
TANK VENT HOSE IS 3/4" (19mm)

TANK FILL HOSE IS 1-1/2" (38mm)



Hunter 49

A/C System Cooling Water (Raw Water)



- | | |
|--|---|
| A 3/4" (1.9cm) BALL VALVE WITH THRU-HULL | H 1/2" (1.27cm) BALL VALVE |
| B 3/4" (1.9cm) STRAINER | I 1/2" (1.27cm) DISCHARGE THRU-HULL FITTING |
| C 3/4" (1.9cm) HOSE | J 5/8" (1.6cm) HB TO 1/2" (1.27cm) MPT |
| D 5/8" (1.6cm) HOSE | K 1/4" (.64cm) TUBING |
| E A/C SEA WATER PUMP | L 1/2" (1.27cm) MPT TO 1/4" (.64cm) HB |
| F 10K BTU AIR CONDITIONER | M 1/2" (1.27cm) STREET ELBOW |
| G 18K BTU AIR CONDITIONER | |

CAUTION

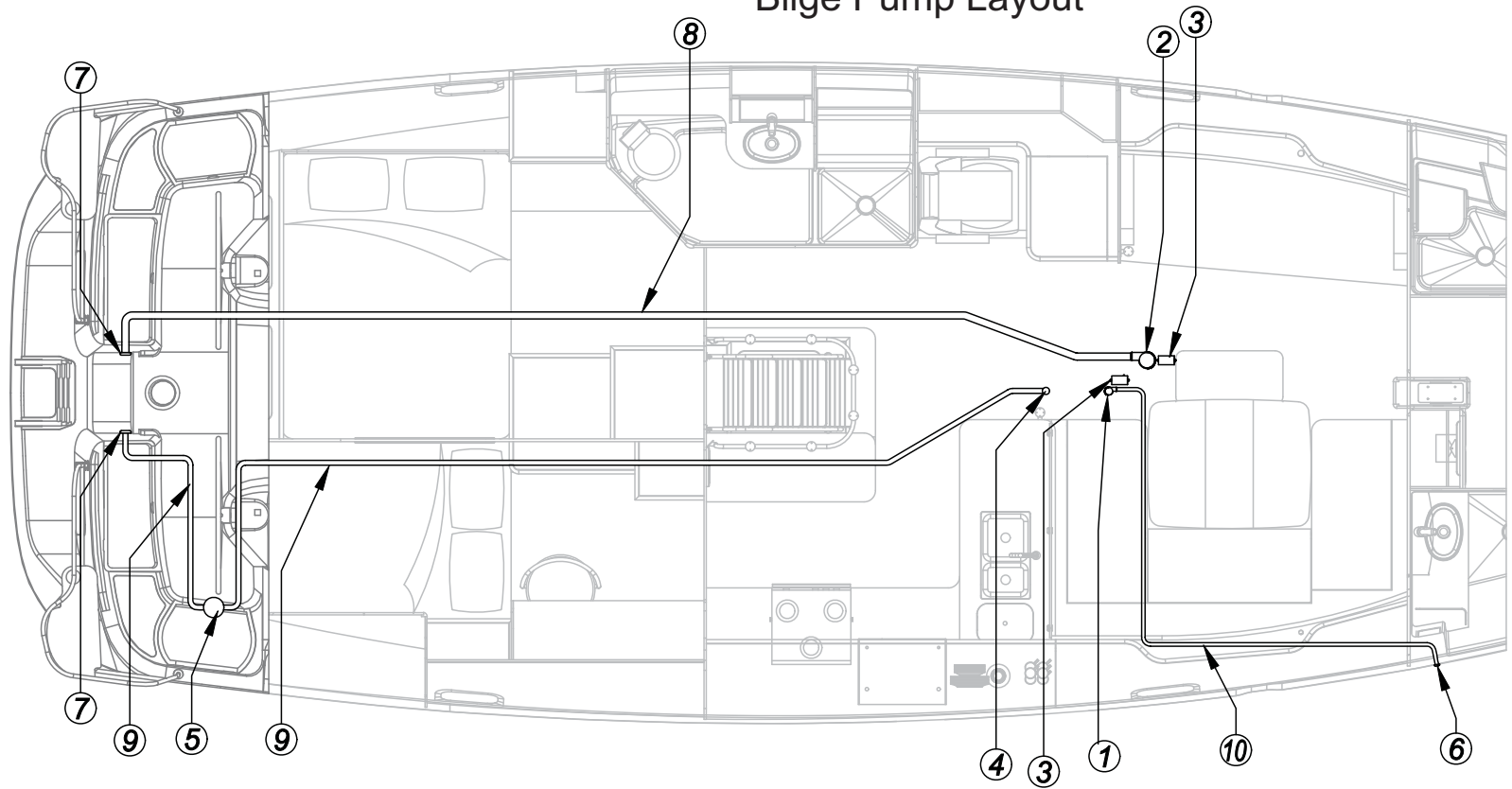
Always insure the intake valve for the AC pump is open before using the AC system

Never leave the intake valve open while the boat is unattended.

A major leak or break in the system will flood your boat!

Make sure you are aware of the laws for dumping waste overboard.

Hunter 49 Bilge Pump Layout

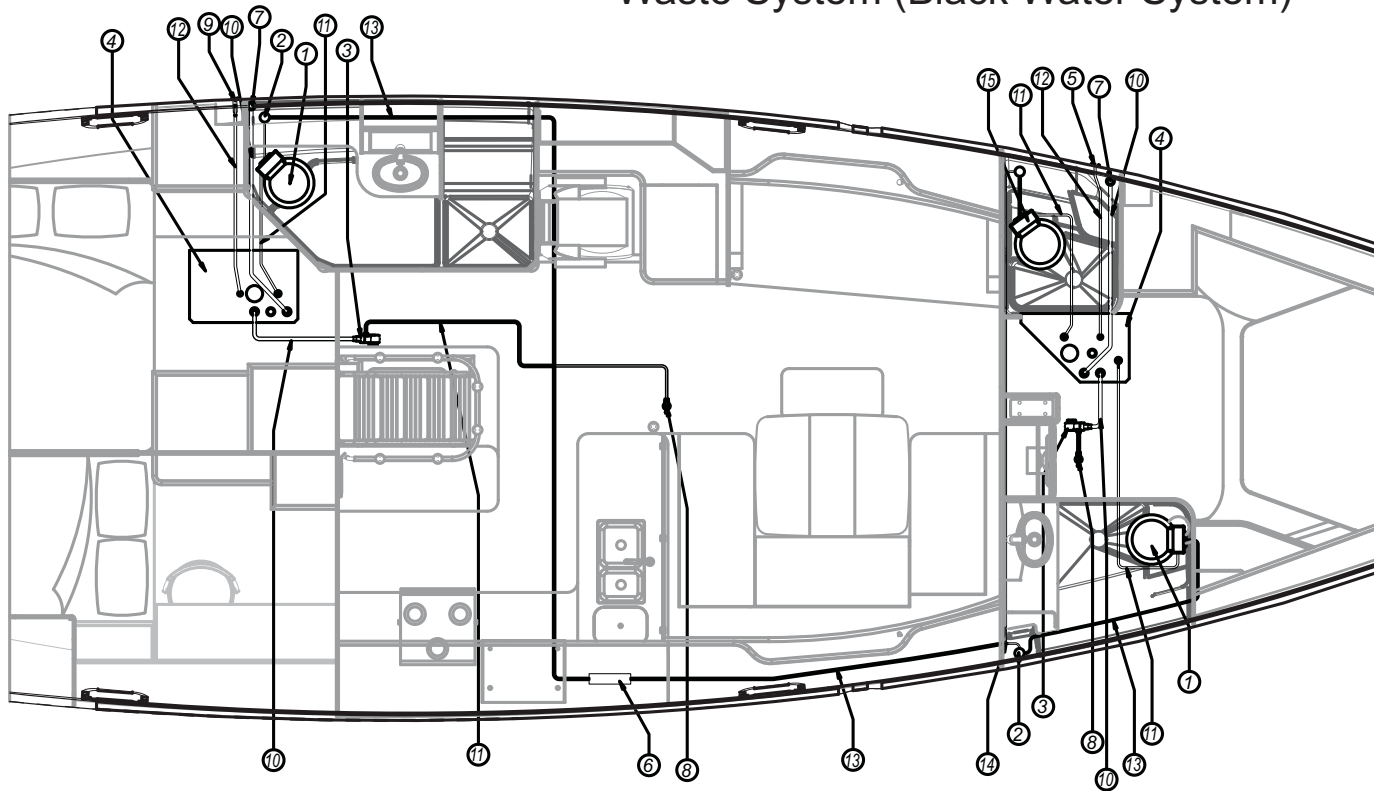


- | | |
|---|---------------------------------------|
| 1. ELECTRIC BILGE PUMP | 6. THRU HULL DISCHARGE |
| 2. HIGH WATER BILGE PUMP | 7. DISCHARGE LOCATED UNDER QUAD COVER |
| 3. FLOAT SWITCH | 8. 2" (5.1cm) HOSE |
| 4. MANUAL BILGE PUMP STRAINER | 9. 1 1/2" (3.8cm) HOSE |
| 5. MANUAL BILGE PUMP LOCATED IN COCKPIT | 10. 1" (2.54cm) HOSE |



Hunter 49

Waste System (Black Water System)



- | | |
|---------------------------|---|
| 1. QUIET FLUSH TOILET | 9. 3/4" (1.91cm) THRU HULL / BALL VALVE |
| 2. FRESH WATER SOLENOID | 10. 1 1/2" (3.8cm) HOSE |
| 3. MACERATOR PUMP | 11. 1" (2.54cm) HOSE |
| 4. WASTE TANK | 12. 5/8" (1.59cm) HOSE |
| 5. WASTE TANK VENT | 13. 15mm FRESH WATER LINE |
| 6. WATER MANIFOLD | 14. 15mm TEE FOR OPTIONAL THIRD TOILET |
| 7. DECK PUMP OUT FITTING | 15. OPTIONAL THIRD TOILET |
| 8. 1" (2.54cm) BALL VALVE | |

⚠ CAUTION ⚠

Always insure the intake valve for the AC pump is open before using the AC system

Never leave the intake valve open while the boat is unattended.

A major leak or break in the system will flood your boat!

Make sure you are aware of the laws for dumping waste overboard.

Save Our Seas

It is illegal to dump plastic trash anywhere into the ocean or navigable waters of the United States. Violation of these requirements may result in civil penalty up to \$25,000, a fine of \$50,000 and imprisonment for up to five years.

PLASTIC - Includes but is not limited to : plastic bags styrofoam cups and lids, sixpack holders, stirrers, synthetic fishing nets, ropes, lines, and bio or photo degradable plastics.

GARBAGE - Means paper, rags, glass, metal, crockery (generated in living spaces aboard the vessel-what we normally call trash) and all kinds of food, maintenance and cargo-associated waste "Garbage" does not include fresh fish or fish parts, dishwasher and gray water.

INSIDE 3 MILES

(and in U.S. Rivers, Bays and Sounds)
PLASTICS
DUNNAGE, LINING AND PACKING MATERIALS THAT FLOAT
ANY GARBAGE EXCEPT DISHWATER
GRAYWATER, FRESH FISH PARTS

3 TO 12 MILES

PLASTICS
DUNNAGE, LINING AND PACKING MATERIALS THAT FLOAT
ANY GARBAGE NOT GROUND TO LESS THAN ONE SQUARE INCH

12 TO 25 MILES

PLASTICS
DUNNAGE, LINING AND PACKING MATERIALS THAT FLOAT

12 TO 25 MILES

PLASTICS

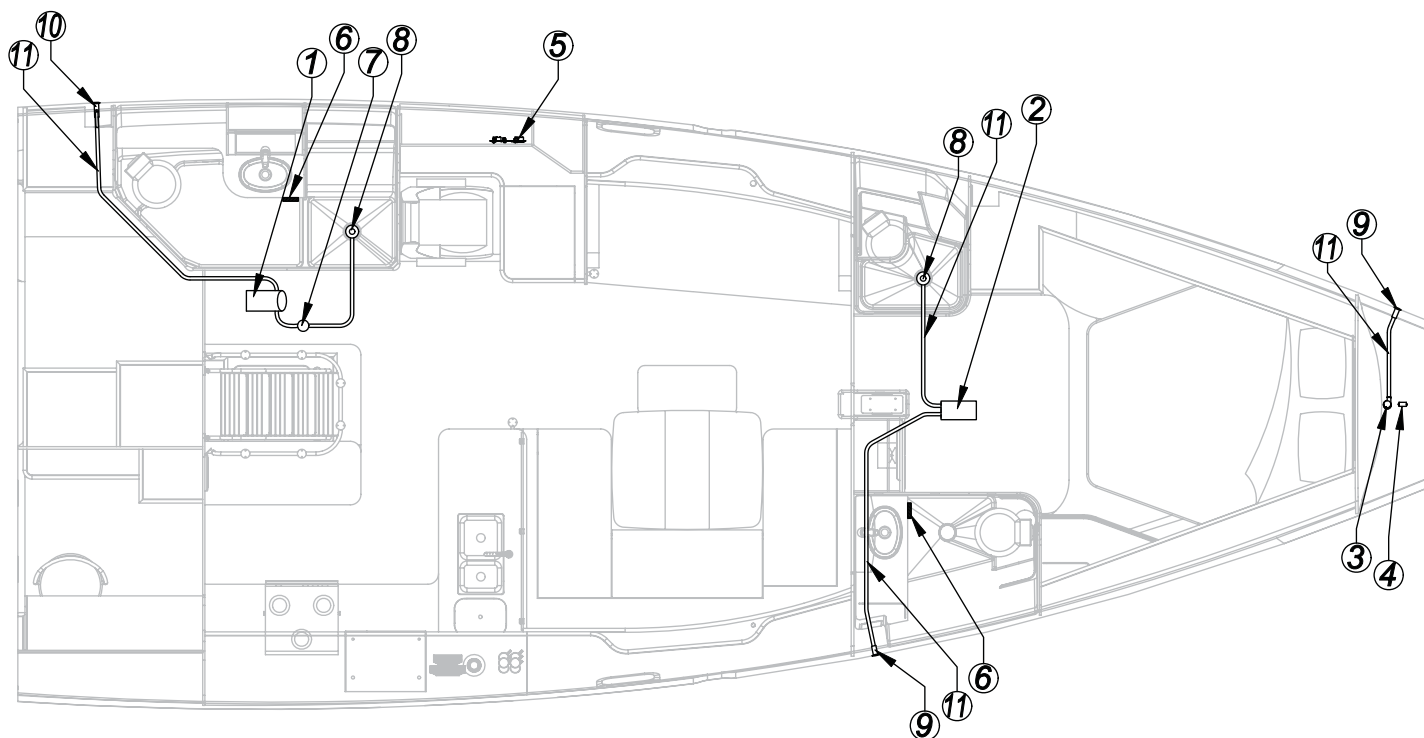
DUNNAGE-Material used to block and brace cargo, and is considered a cargo associated waste.

DISHWATER- Means the liquid residue from the manual or automatic washing of dishes and cooking utensils which have been pre-cleaned to the extent that any food particles adhering to them would normally interfere with the operation of automatic dishwashers.

GRAYWATER- Means drain age from a dishwasher, shower, laundry bath, and washbasin, and does not include drainage from toilets, urinals, hospitals, and cargo spaces.

Hunter 49

Waste System (Grey Water)



- | | |
|---|--|
| 1. SUMP PUMP | 7. FILTER |
| 2. SUMP PUMP BOX | 8. SHOWER DRAIN |
| 3. SAIL LOCKER PUMP (SWITCH ON AC/DC CONTROL PANEL) | 9. 3/4" (1.9cm) THRU-HULL |
| 4. FLOAT SWITCH | 10. 3/4" (1.9cm) THRU-HULL WITH BALL VALVE |
| 5. AC/DC CONTROL PANEL | 11. 3/4" (1.9cm) HOSE |
| 6. SUMP PUMP ON/OFF SWITCH | |

⚠ CAUTION ⚠

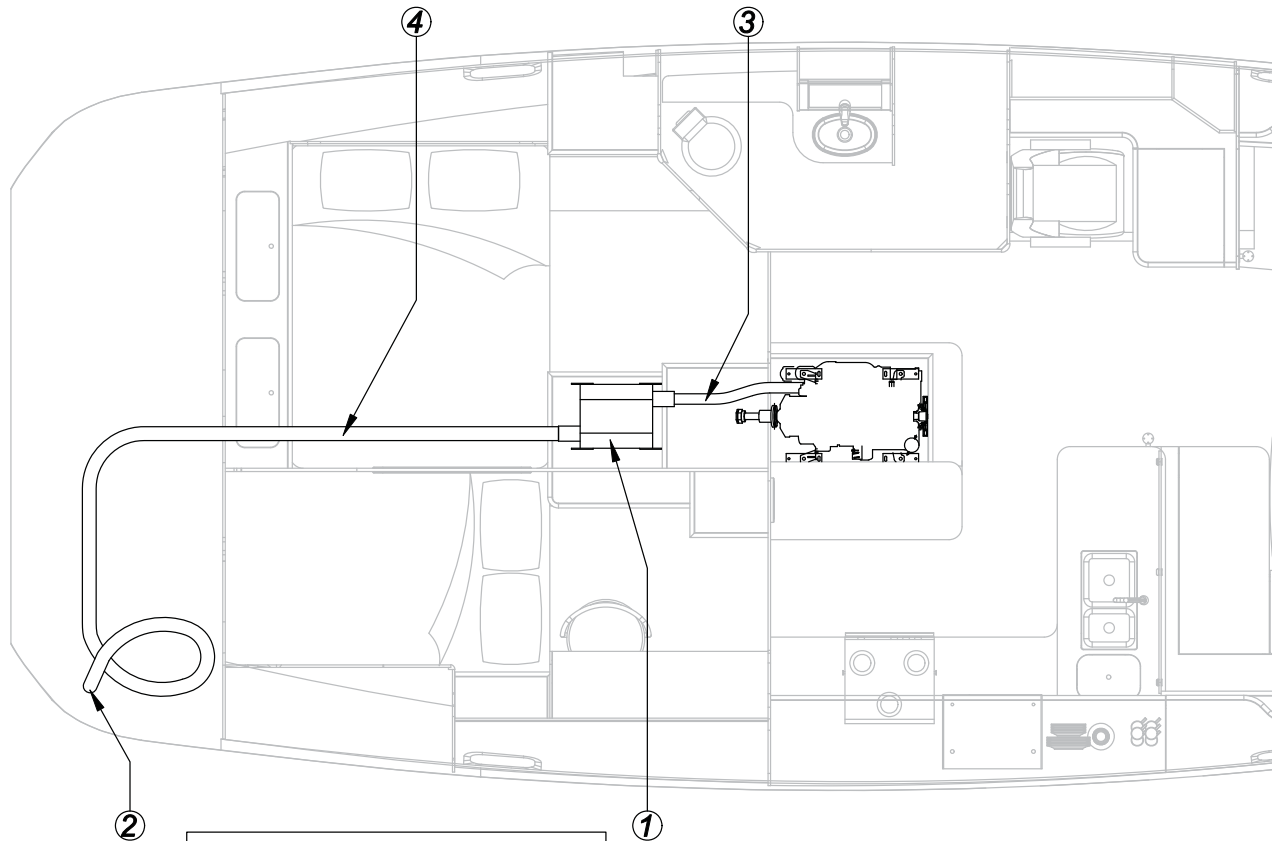
Always insure the intake valve for the AC pump is open before using the AC system

Never leave the intake valve open while the boat is unattended.
A major leak or break in the system will flood your boat!

Make sure you are aware of the laws for dumping waste overboard.



Hunter 49 Exhaust System



1. WET EXHAUST MUFFLER
2. ENGINE EXHAUST PORT
3. 3" (7.62cm) WET EXHAUST HOSE
4. 3 1/2" (8.89cm) WET EXHAUST HOSE

! DANGER !

Direct exposure to Carbon Monoxide will cause brain damage or death!

Carbon Monoxide is colorless, odorless, and dangerous!

All engines, generators, and open flame appliances produce Carbon Monoxide!

Signs of exposure include
nausea, dizziness and
drowsiness!

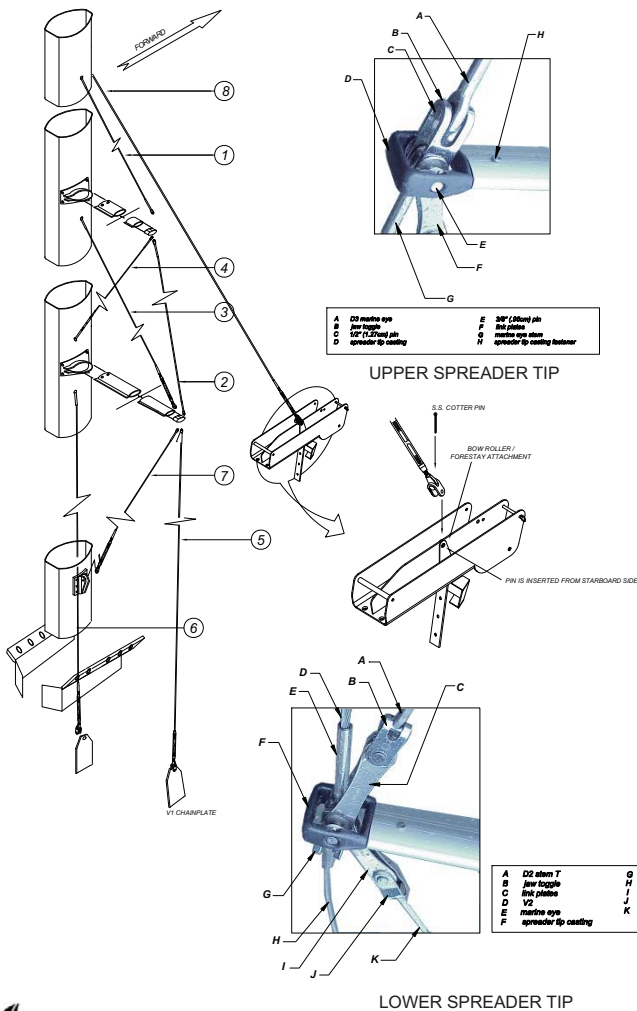
Avoid blockage of exhausts!

Keep cabin and cockpit well ventilated!

See Owner's / Operator's Manuals for more details!



Hunter 49 Standing Rigging

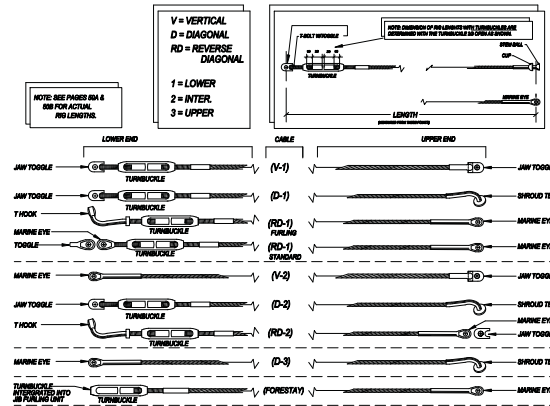


HUNTER 49 CONVENTIONAL STANDING RIGGING						
ITEM	QTY	WIRE SIZE	FITTINGS	CP / EOS		
1	D3	2 3/8" 10mm	EYE 308-365 FORK 308-318-01	18 ft. 2 1/2"	5550 mm	
2	V2	2 3/8" 10mm	EYE 308-365 EYE 308-365	18 ft. 1/2"	5500 mm	
3	D2	2 5/16" 8mm	STEMBALL 308-555 CUPS 308-674	18 ft.	5485 mm	
			1/2" STD/FORK TB 174-325-06			
4	RD2	2 9/32" 7mm	FORK 308-315-01 STD/FORK TB 174-324-10	17 ft. 9 3/8"	5420 mm	
5	V1	2 1/2" 12mm	FORK 308-318-01 BUSHING 306-539 IN FORK	18 ft. 7 1/4"	5670 mm	
			7/8" STD/TGLE TB NAVTEC N874-002828			
6	D1	2 1/2" 12mm	STEMBALL 308-557 3/4" STD/TGLE TB 174-327-12	19 ft 1/2"	5805 mm	
7	RD1	2 1/4" 6mm	FORK 308-314-01 STD/T TB 174-474-21	14 ft. 2 7/8"	4340 mm	
8	FORESTAY	1 3/8" 10mm	FURLEX 310-17 OVERALL CP-CP 039-027-64	56 ft. 4 1/2"	17185 mm	
			FURLEX 308-15 OVERALL CP-CP 039-027-61	41 ft. 10"	12750 mm	
			Option Not Shown			
SRIG-6936T						

1. CP = CENTER PIN; EOS = END OF STUD
2. LENGTHS DO NOT INCLUDE SPREADER TIP LINKAGE.
3. MEASURE T-TERMINALS & STEMBALLS FROM TOP OF FITTING.

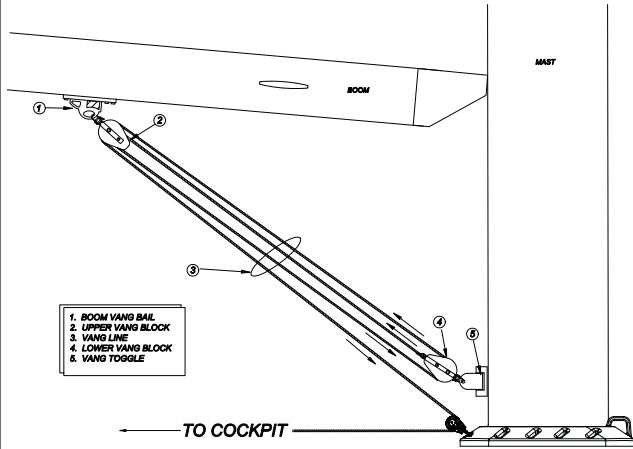
HUNTER 49 FURLING STANDING RIGGING						
ITEM	QTY	WIRE SIZE	FITTINGS	CP-CP OR CP-EOS		
1	D3	2 3/8" 10mm	EYE 308-365 FORK 308-318-01	18 ft. 2 1/2"	5550 mm	
2	V2	2 3/8" 10mm	EYE 308-365 EYE 308-365	18 ft. 1/2"	5500 mm	
3	D2	2 5/16" 8mm	T-TERMINAL 308-326 STD/FORK TB 174-325-06	16 ft. 11 1/8"	5160 mm	
4	RD2	2 9/32" 7mm	FORK 308-315-01 STD/FORK TB 174-324-10	17 ft. 9 3/8"	5420 mm	
5	V1	2 1/2" 12mm	FORK 308-318-01 BUSHING 306-539 IN FORK	18 ft. 7 1/4"	5670 mm	
			STD/TGLE TB 674-002828			
6	D1	2 1/2" 12mm	EYE 308-366 STD/TGLE TB 174-327-12	18 ft. 3 1/4"	5570 mm	
7	RD1	2 1/4" 6mm	FORK 308-314-01 STD/T TB 174-474-21	14 ft. 2 7/8"	4340 mm	
8	FORESTAY	1 3/8" 10mm	FURLEX 310-17 OVERALL CP-CP 039-027-64	56 ft. 4 1/2"	17185 mm	
			FURLEX 308-15 OVERALL CP-CP 039-027-61	41R 10"	12750 mm	
			Option Not Shown			
SRIG-6732						

1. CP = CENTER PIN / EOS = END OF STUD
2. LENGTHS DO NOT INCLUDE SPREADER TIP LINKAGE.
3. MEASURE T-TERMINALS & STEMBALLS FROM TOP OF FITTING.

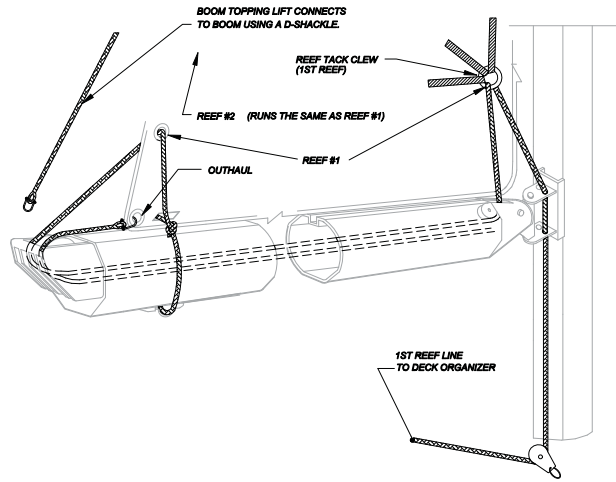


Hunter 49

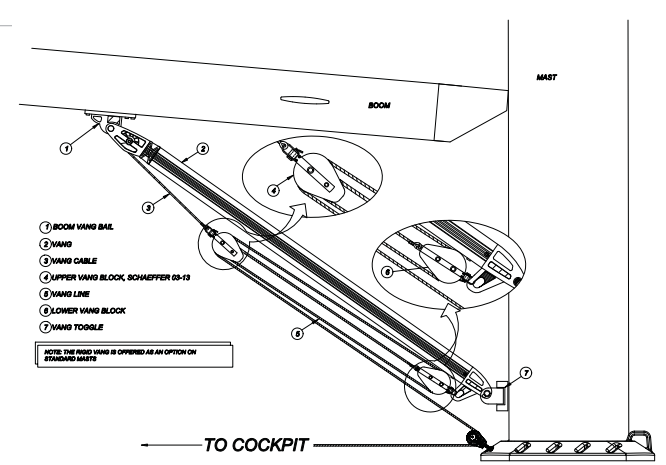
Boom and Mainsheet Purchase Layout



ROPE VANG DETAILS (STANDARD)

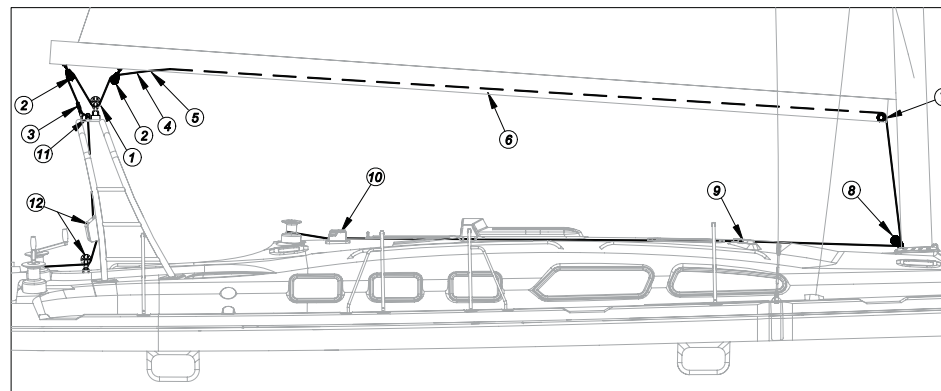


BOOM WITH REEFING LAYOUT



RIGID VANG (FURLING OPTION)

- 1 BLOCK ON TRAVELER CAR
- 2 BOOM BALE AND MAINSHEET BLOCK
- 3 ARCH BLOCK ON BALE TO ARCH UPPER SHEAVE
- 4 MAINSHEET
- 5 MAINSHEET BOOM EXIT
- 6 MAINSHEET RUN INSIDE BOOM
- 7 MAINSHEET SHEAVE INSIDE FWD BOOM END
- 8 MAINSHEET BLOCK AT MAST STEP
- 9 MAINSHEET THRU BLOCK ORGANIZERS
- 10 MAINSHEET THROUGH SHEET STOPPER TO WINCH
- 11 ARCH UPPER SHEAVE FOR MAIN SHEET (PORT SIDE)
- 12 MAINSHEET THROUGH SHEET STOPPER AND BLOCK TO WINCH



DUAL ENDED MAINSHEET PURCHASE LAYOUT



Hunter 49

Sailplans

E	21'-10"	6.65 m
P	51'-07 1/4"	15.73 m
P*	56'-02"	17.11 m
I	54'-07 1/4"	16.65 m
J	16'-06"	5.03 m

P* Optional Tail Rig

NON-OVERLAP JIB
NO STAYSAIL
JIB SHEETS ON
SELF-TACKING APPARATUS



STANDARD SAILPLAN

E	21'-10"	6.65 m
P	51'-07 1/4"	15.73 m
P*	55'-09 1/4"	17.00 m
I	54'-07 1/4"	16.65 m
I2	41'-03 1/2"	12.59 m
J	16'-06"	5.03 m
J2	11'-01"	3.38 m

P* Optional Tail Rig

VERTICAL BATTEN MAIN
OVERLAP JIB
STAYSAIL ON SELF-TACKING APPARATUS
JIB SHEETS ON SIDE DECK

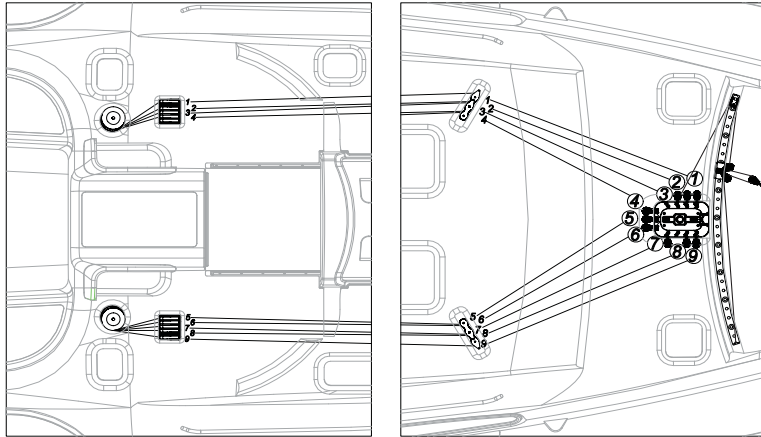


FURLING SAILPLAN



Hunter 49

Standard Running Rigging



- 1 OPTIONAL SPINNAKER HALYARD
- 2 JIB HALYARD *
- 3 SELF - TACKING JIB SHEET
- 4 #2 REEF *
- 5 VANG LINE
- 6 #1 REEF *
- 7 MAINSHEET
- 8 MAIN HALYARD
- 9 OPTIONAL STAYSAIL HALYARD

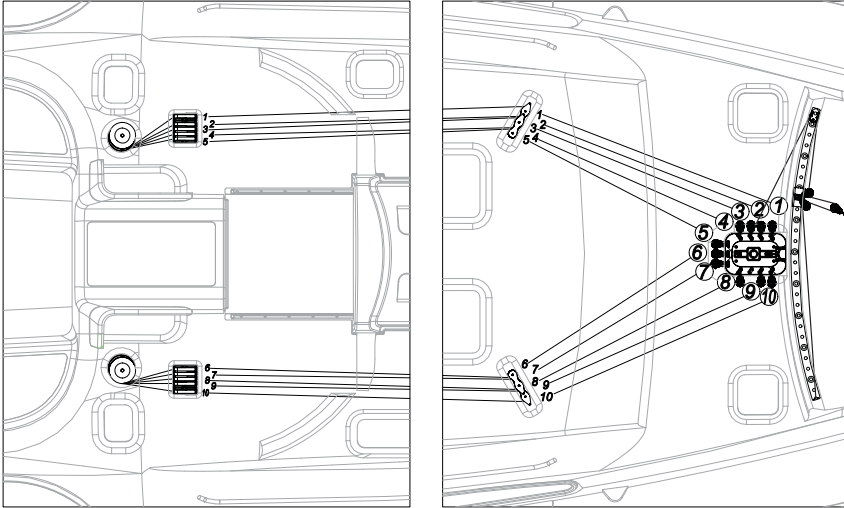
* RUNS THROUGH TOP ORGANIZER BLOCK

RUNNING RIGGING SPECIFICATIONS									
Boat: HUNTER 49 CONV TALL			Selden Mast # RRIIG-6936T			Date: 05/04/06			
OPT/STD	ITEM	QTY	Line Size	Line Type	Color	End 1	Length		End 2
1 STD	MAIN HALYARD	1	14mm (1/2")	32/3 pl	BLUE	307-444 SHACKLE/Knot	44 m	145ft	BARE
2 STD	JIB HALYARD	1	14mm (9/16")	32/3 pl	RED	307-047 SHACKLE/Knot	40.5 m	132ft	BARE
3 STD	MAIN TRAVELER LINE	2	10mm (3/8")	16/16 pl	WHITE	EYE	9 m	29ft	BARE
4 STD	MAINSHEET	1	14mm (9/16")	16/16 pl	BLUE	EYE	52 m	170ft	BARE
5 STD	REEFING LINE #1	1	14mm (9/16")	32/3 pl	BLUE	BARE	22 m	72ft	BARE
6 STD	REEFING LINE #2	1	14mm (9/16")	32/3 pl	RED	BARE	28 m	92ft	BARE
7 STD	JIB SHEETS	2	14mm (9/16")	16/16 pl	RED	BARE	25 m	82ft	BARE
8 OPT	SELF TACKING SHEET	1	12mm (1/2")	32/3 pl	RED	BARE	27	89ft	BARE
9 OPT	CRUISING SPINN. SHEET	2	12mm (1/2")	16/16 pl	WHITE	BARE	30.5 m	100ft	BARE
10 OPT	SPINNAKER HALYARD	1	14mm (9/16")	32/3 pl	WHITE	307-339 Shackle / Knot	43 m	141ft	BARE
11 STD	RODKICKER TACKLE	1	12mm (1/2")	16/16 pl	WHITE	EYE	9 m	30ft	BARE
12 STD	BOOM TOPPING LIFT	1	10mm (3/8")	32/3 pl	WHITE	307-037 / Knot	44 m	145ft	BARE
13 OPT	STAYSAIL HALYARD	1	12mm (1/2")	32/3 pl	BLUE	307-339 Shackle / Knot	33m	108ft	BARE
14 OPT	STAYSAIL SHEET	1	12mm (1/2")	32/3 pl	RED	BARE	27m	89ft	BARE
15 STD	LAZY JACK WIRE	2	4mm (5/32")	PVC Wire	WHITE	307-010 Shackle	6m	20ft	Block
16 STD	Fixed Lazy Jack Line	2	10mm (3/8")	16/16 pl	WHITE	BARE	8m	26ft	BARE
17 STD	Adjustable Lazy Jack Line	2	10mm (3/8")	16/16 pl	WHITE	Plastic Thimble	9m	30ft	BARE



Hunter 49

Furling Running Rigging



- 1 OPTIONAL SPINNAKER HALYARD
- 2 JIB HALYARD *
- 3 SELF - TACKING JIB SHEET
- 4 FURLING LINE *
- 5 FURLING LINE
- 6 VANG LINE
- 7 OUTHAUL *
- 8 MAINSHEET
- 9 MAIN HALYARD *
- 10 STAYSAIL HALYARD

* RUNS THROUGH TOP ORGANIZER BLOCK

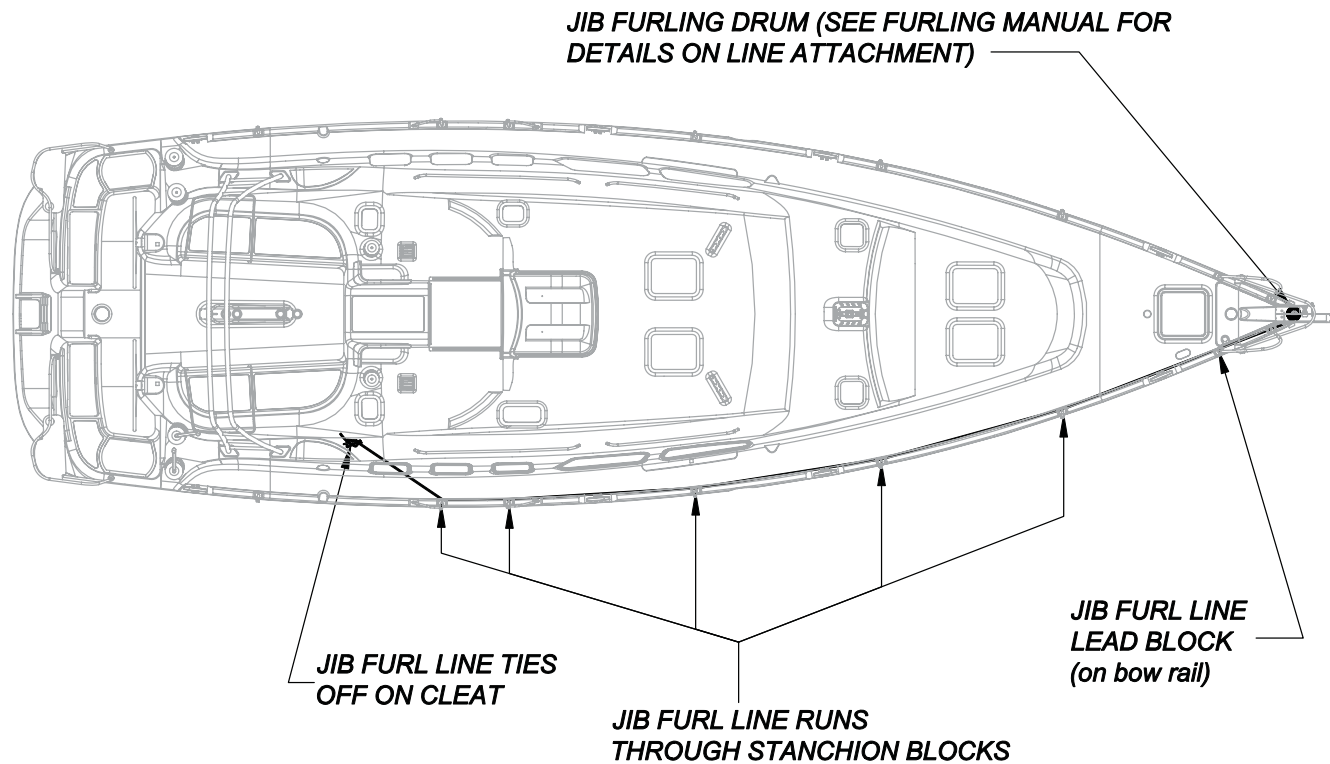
RUNNING RIGGING SPECIFICATIONS									
Boat: HUNTER 49 FURL TALL		Selden Mast # RRI6-6732T				Date: 05/04/06			
OPT/STD	ITEM	QTY	Line Size	Line Type	Color	End 1	Length		End 2
1 STD	MAIN HALYARD	1	12mm (1/2")	HMPE	WHITE	EYE	44 m	145ft	BARE
2 STD	JIB HALYARD	1	14mm (9/16")	32/3 pl	RED	307-047 SHACKLE/Knot	40.5 m	132ft	BARE
3 STD	MAIN TRAVELER LINE	2	10mm (3/8")	16/16 pl	WHITE	EYE	9 m	29ft	BARE
4 STD	MAINSHEET	1	14mm (9/16")	16/16 pl	BLUE	EYE	52 m	170ft	BARE
5 STD	JIB SHEETS	2	14mm (9/16")	16/16 pl	RED	BARE	25 m	82ft	BARE
6 OPT	SELF TACKING SHEET	1	12mm (1/2")	32/3 pl	RED	BARE	27	89ft	BARE
7 OPT	CRUISING SPINN. SHEET	2	12mm (1/2")	16/16 pl	WHITE	BARE	30.5 m	100ft	BARE
8 OPT	SPINNAKER HALYARD	1	14mm (9/16")	32/3 pl	WHITE	307-339 Shackle / Knot	43 m	141ft	BARE
9 STD	RODKICKER TACKLE	1	12mm (1/2")	16/16 pl	WHITE	EYE	9 m	30ft	BARE
10 STD	BOOM TOPPING LIFT	1	10mm (3/8")	32/3 pl	WHITE	307-037 / Knot	44 m	145ft	BARE
11 OPT	STAYSAIL HALYARD	1	12mm (1/2")	32/3 pl	BLUE	307-339 Shackle / Knot	33m	108ft	BARE
12 OPT	STAYSAIL SHEET	1	12mm (1/2")	32/3 pl	RED	BARE	27m	89ft	BARE
13 STD	FURLIN LINE	1	10mm (3/8")	16/16 pl	YELLOW	BARE	20m	65ft	BARE

RUNNING RIGGING SPECIFICATIONS									
Boat: HUNTER 49 FURL		Selden Mast # RRI6-6732				Date: 05/04/06			
OPT/STD	ITEM	QTY	Line Size	Line Type	Color	End 1	Length		End 2
1 STD	MAIN HALYARD	1	12mm (1/2")	HMPE	WHITE	EYE	40 m	131ft	BARE
2 STD	JIB HALYARD	1	14mm (9/16")	32/3 pl	RED	307-047 SHACKLE/Knot	40.5 m	132ft	BARE
3 STD	MAIN TRAVELER LINE	2	10mm (3/8")	16/16 pl	WHITE	EYE	9 m	29ft	BARE
4 STD	MAINSHEET	1	14mm (9/16")	16/16 pl	BLUE	EYE	52 m	170ft	BARE
5 STD	JIB SHEETS	2	14mm (9/16")	16/16 pl	RED	BARE	25 m	82ft	BARE
6 OPT	SELF TACKING SHEET	1	12mm (1/2")	32/3 pl	RED	BARE	27	89ft	BARE
7 OPT	CRUISING SPINN. SHEET	2	12mm (1/2")	16/16 pl	WHITE	BARE	30.5 m	100ft	BARE
8 OPT	SPINNAKER HALYARD	1	14mm (9/16")	32/3 pl	WHITE	307-339 Shackle / Knot	43 m	141ft	BARE
9 STD	RODKICKER TACKLE	1	12mm (1/2")	16/16 pl	WHITE	EYE	9 m	30ft	BARE
10 STD	BOOM TOPPING LIFT	1	10mm (3/8")	32/3 pl	WHITE	307-037 / Knot	40 m	131ft	BARE
11 OPT	STAYSAIL HALYARD	1	12mm (1/2")	32/3 pl	BLUE	307-339 Shackle / Knot	33m	108ft	BARE
12 OPT	STAYSAIL SHEET	1	12mm (1/2")	32/3 pl	RED	BARE	27m	89ft	BARE
13 STD	FURLIN LINE	1	10mm (3/8")	16/16 pl	YELLOW	BARE	20m	65ft	BARE



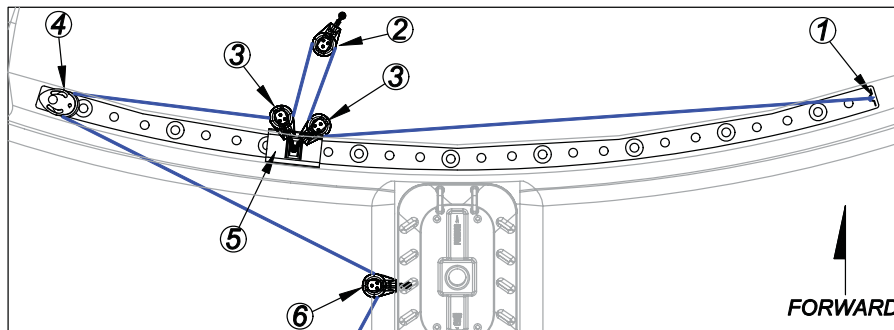
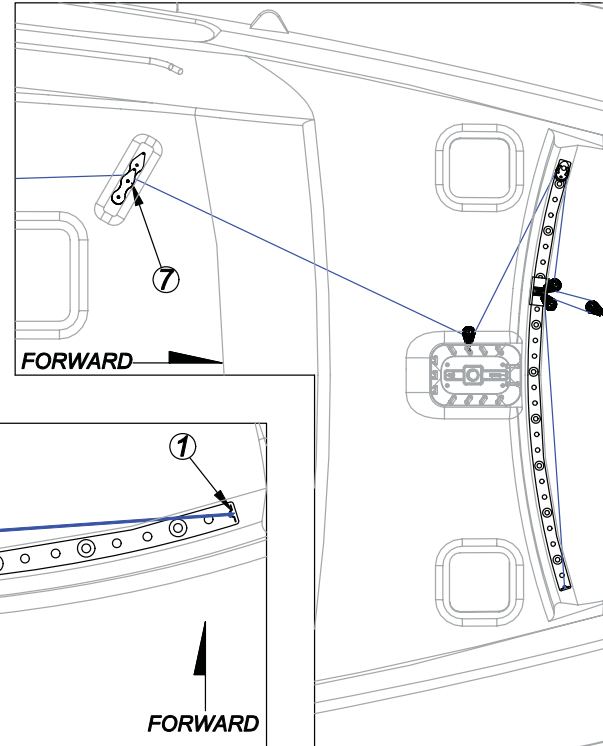
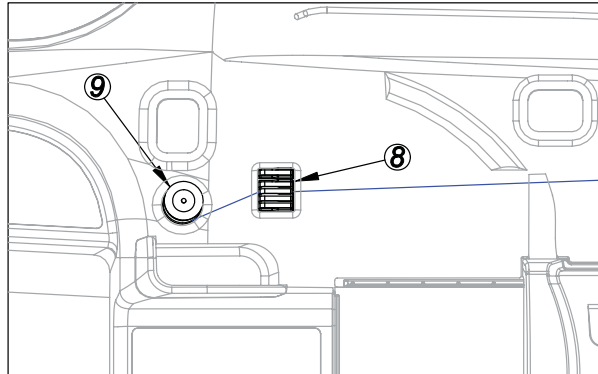
Hunter 49

Jib Furling Line Layout



Hunter 49

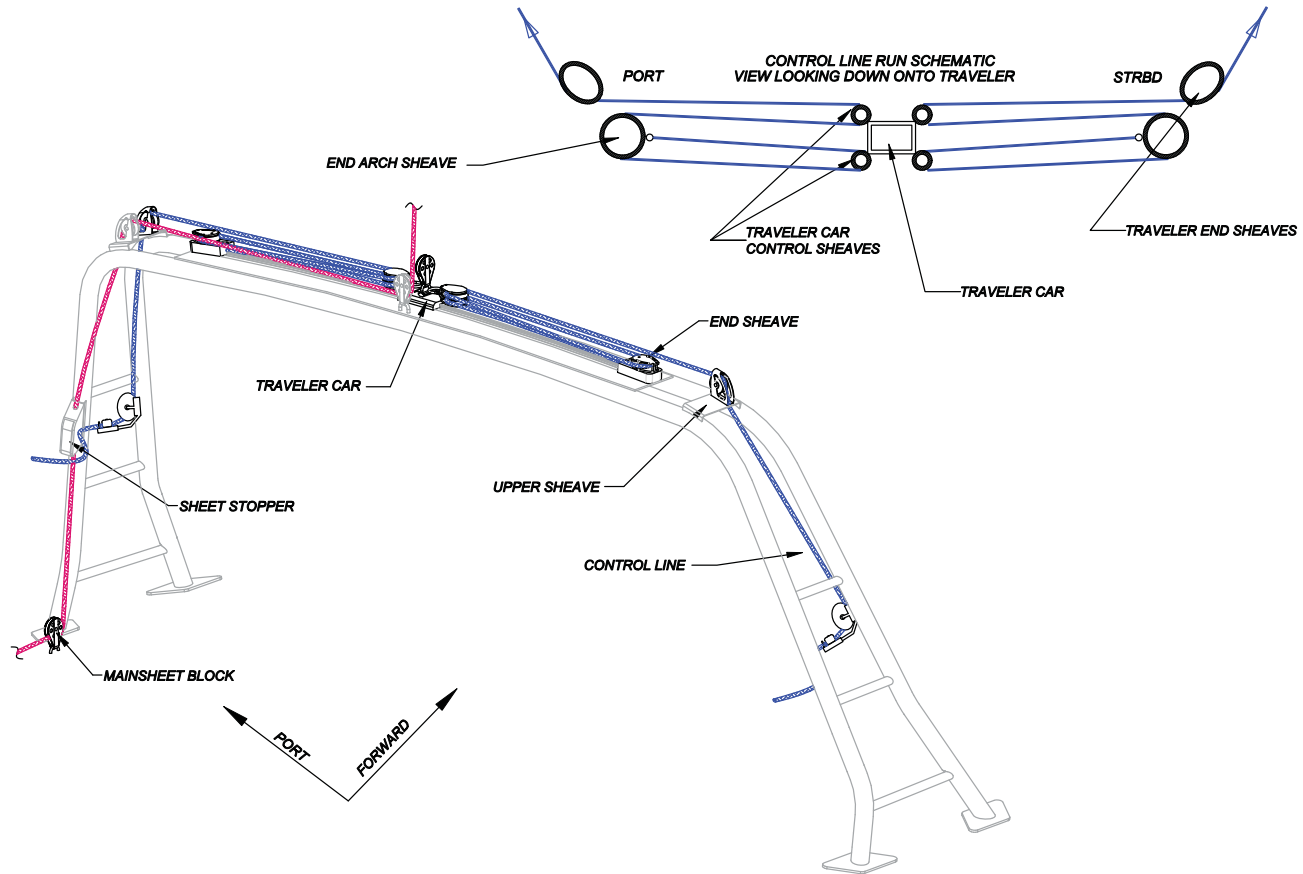
Self-Tacking Jib Sheet



- | | |
|----------------------------------|-------------------|
| 1 JIB SHEET BAIL FOR DEAD END | 6 JIB SHEET BLOCK |
| 2 JIB CLEW BLOCK | 7 DECK ORGANIZER |
| 3 JIB SHEET CAR BLOCK | 8 SHEET STOPPER |
| 4 JIB SHEET TRACK TURNING SHEAVE | 9 WINCH |
| 5 JIB SHEET CAR | |



Hunter 49 Mainsheet Traveler



Hunter 49

Arch Installation

ARCH INSTALLATION: NOTES AND TOOL LIST

NOTES:

1. IMPORTANT: READ ALL OF THE INSTALLATION INSTRUCTIONS THOROUGHLY BEFORE BEGINNING.
2. THIS JOB REQUIRES TWO PEOPLE. IT IS IMPORTANT THAT THE ARCH IS FIRMLY SUPPORTED UNTIL IT IS FULLY ATTACHED TO THE DECK.
3. WHEN INSTALLING ARCH: TO AVOID POSSIBLE INJURY, ORIENT THE DIRECTION OF THE ARCH PRIOR TO BEGINNING THE INSTALLATION PROCESS.
4. SEE BELOW FOR A LIST OF TOOLS SUGGESTED FOR THE INSTALLATION PROCESS.
5. IMPORTANT: REMEMBER TO CHECK ALL THE ARCH BOLTS / NUTS AFTER THE INITIAL SEA TRIAL AND RETIGHTEN AS NECESSARY

SUGGESTED TOOL LIST:
 DRILL AND 3/8" DRILL BIT (TO CLEAR SEALANT FROM HOLES)
 3/8" DRIVE RATCHET
 6" EXTENSION
 9/16" DEEP & REGULAR SOCKET
 9/16" WRENCH
 SCREW DRIVER-PHILLIPS HEAD (LARGE P-4)
 CAULK GUN
 TUBE OF SEALANT (3M 5200)
 NEVER SEIZE (BOLT LUBE)
 RAZOR KNIFE
 WIRE STRIPPERS/CRIMPS
 RAGS
 ACETONE OR LACQUER THINNER / CLEAN UP

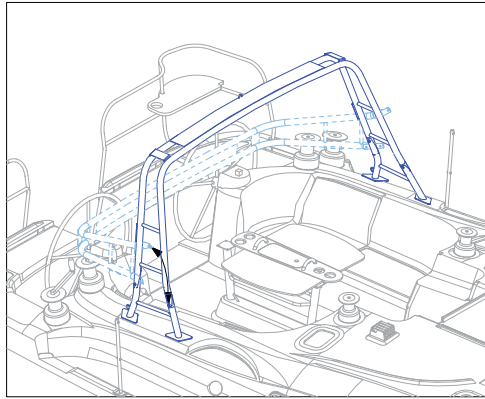
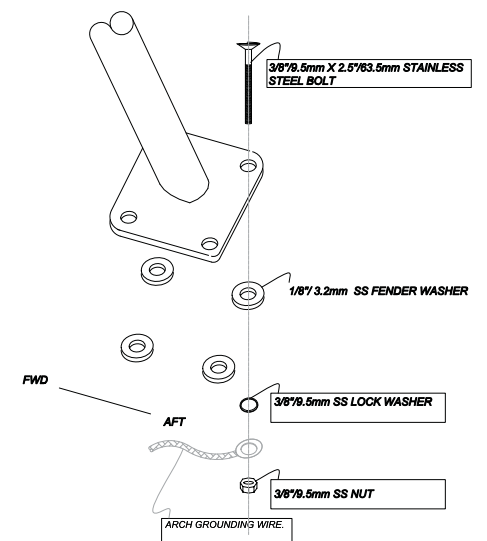
NOTE: THE ARCH SHOULD BE IN THE UPRIGHT POSITION (NOT FOLDED BACK) WHEN INSTALLING.

1. REMOVE ALL ACCESSORIES STOWED IN THE COCKPIT LOCKERS. THIS WILL ENABLE EASIER ACCESS WHEN FASTENING THE ARCH BOLTS.
2. WITH 3/8" DRILL BIT, REMOVE ANY SEALANT FROM PRE-DRILLED ARCH HOLES.
3. CLEAN AROUND THE MOUNTING HOLES USING ACETONE OR LACQUER THINNER.
4. APPLY A GENEROUS AMOUNT OF 3M 5200 SEALANT AT THE ARCH MOUNTING HOLE LOCATIONS ON THE FOOT DECK.
5. TO AVOID POSSIBLE INJURY, ORIENT THE ARCH (LEANING BACKWARD) PRIOR TO PLACING IT ON THE BOAT.
6. PLACE THE ARCH ON THE DECK OF THE BOAT. ALIGN THE ARCH FOOT HOLES ON ONE SIDE (EITHER PORT OR STARBOARD) WITH THE CORRESPONDING PRE DRILLED DECK HOLES.
7. INSERT 3/8"(9.5mm) STAINLESS STEEL BOLTS THRU ALL HOLES IN ARCH FOOT AND INTO THE COAMING.
8. REPEAT STEP 8 WITH OTHER ARCH FOOT.
9. ACCESS THE UNDERSIDES OF THE DECK AT THE ARCH FOOT
10. INSTALL THE 1/8" (3.2mm) FENDER WASHERS ON THE INSIDE OF THE COAMING AND INSTALL LOCK WASHER AND S.S. NUT ON THE BOLT WHICH HAS BEEN INSERTED. TIGHTEN BOLT COMPLETELY. (IT IS IMPORTANT TO APPLY A SMALL AMOUNT OF NEVER SEIZE TO THE BOLT TO PREVENT "GALLING" OF THE THREADS.)
11. BE SURE TO INSTALL THE ARCH GROUNDING WIRE
12. RECHECK THE ARCH FIT ONTO THE DECK. THE HEIGHT SHOULD MEASURE AT LEAST 6" 2" (1.88)
13. SECURELY TIGHTEN ALL THE NUTS AND BOLTS USING A CROSS TIGHTENING PATTERN. (DO NOT FORGET TO USE A SMALL AMOUNT OF LUBRICANT FOR THE BOLTS).
14. CLEAN EXCESS SEALANT FROM AROUND THE ARCH FEET AND COAMING AREAS USING ACETONE OR LACQUER THINNER.
15. RECHECK THE BOLTS AFTER THE INITIAL SEA TRIAL AND TIGHTEN AS NECESSARY.

NOTE: THE BOAT IS DELIVERED TO THE DEALER WITH THE ARCH MOUNTED AND IN THE FOLDED DOWN POSITION.

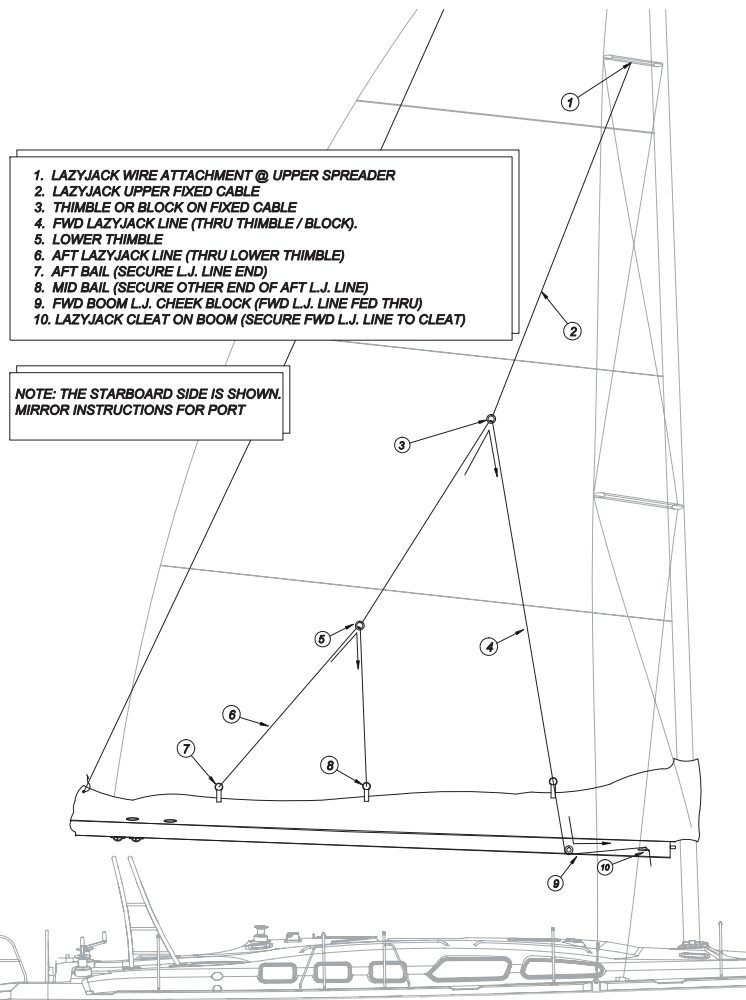
1. LOCATE THE COUNTERSINK MACHINE SCREWS AND TUBE OF LOCTITE (SHOULD BE AT THE NAV STATION IN THE CHART TABLE)
2. WHILE LIFTING THE ARCH TO THE UPRIGHT POSITION, FEED WIRE LOOM INTO ARCH LEG.
3. ALIGN BOLT HOLES ON THE FWD ARCH CLAMPS FIRST AND START MACHINE SCREWS. APPLY LOCTITE TO THE TIP OF SCREWS ONLY.
4. AFTER ALL SCREWS ARE STARTED, GO BACK AND TIGHTEN MOUNTING HOLE LOCATIONS ON THE FOOT DECK.
5. RECHECK THE BOLTS AFTER THE INITIAL SEA TRIAL AND TIGHTEN AS NECESSARY.

TYPICAL ARCH FOOT



Hunter 49

Lazyjack Installation



1. LAZYJACK WIRE ATTACHMENT @ UPPER SPREADER
2. LAZYJACK UPPER FIXED CABLE
3. THIMBLE OR BLOCK ON FIXED CABLE
4. FWD LAZYJACK LINE (THRU THIMBLE / BLOCK).
5. LOWER THIMBLE
6. AFT LAZYJACK LINE (THRU LOWER THIMBLE)
7. AFT BAIL (SECURE L.J. LINE END)
8. MID BAIL (SECURE OTHER END OF AFT L.J. LINE)
9. FWD BOOM L.J. CHEEK BLOCK (FWD L.J. LINE FED THRU)
10. LAZYJACK CLEAT ON BOOM (SECURE FWD L.J. LINE TO CLEAT)

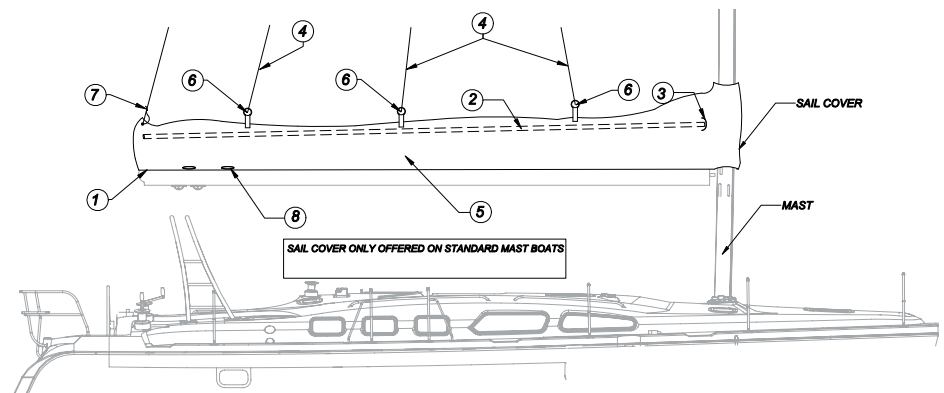
NOTE: THE STARBOARD SIDE IS SHOWN.
MIRROR INSTRUCTIONS FOR PORT

SLIDE THE BOLTROPE INTO BOOM TRACK ①. START FROM THE AFT END AND MAKE YOUR WAY FORWARD.

INSTALL THE PVC BATTENS ② INTO EACH HALF OF THE SAIL COVER. THERE ARE POCKETS ③ THAT OPEN TOWARDS THE FRONT, ON THE INSIDE OF THE COVER. SLIDE THE BATTENS INTO PLACE FROM THE FRONT, AND ROLL THE INSIDE LIP OF THE POCKET BACK IN ORDER TO HOLD THE BATTENS STATIONARY.

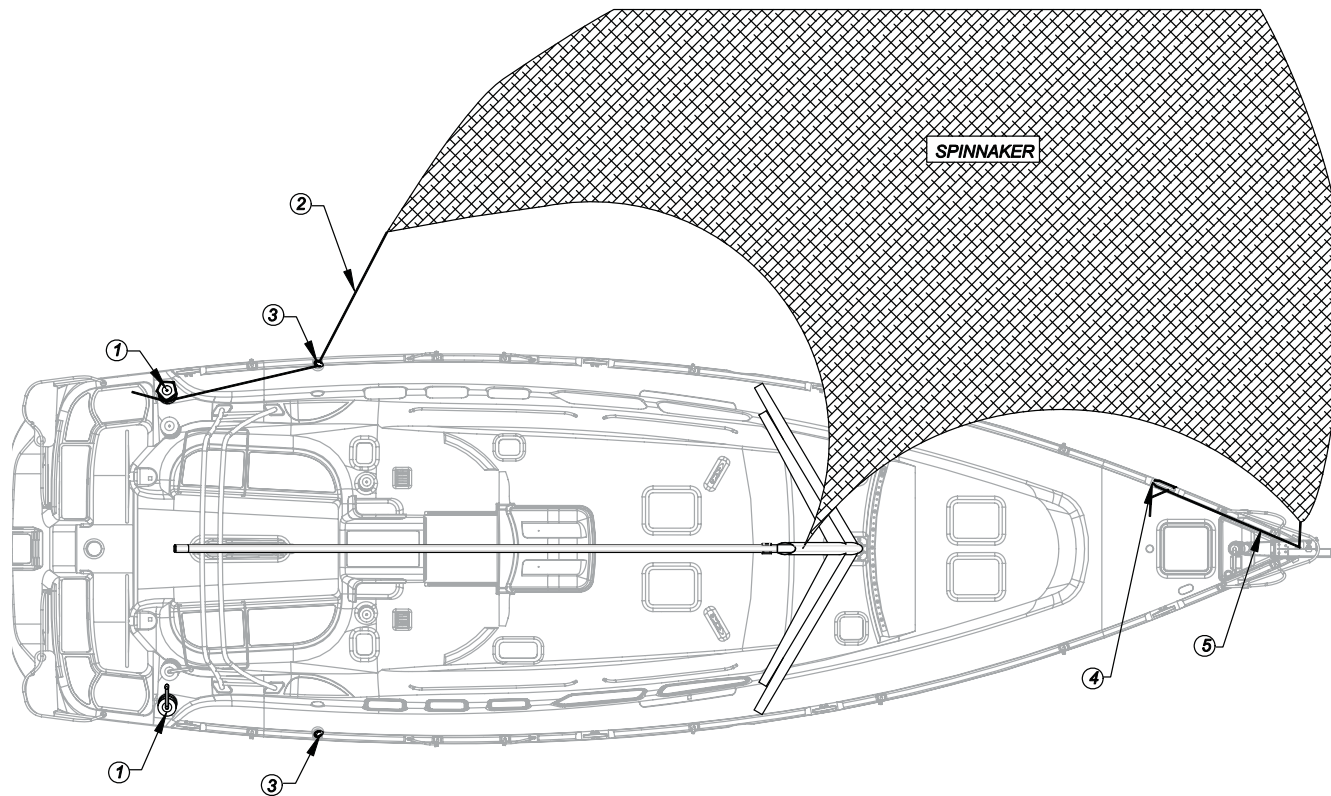
FEED THE LAZYJACK LINES ④ TO THE SAIL COVER ⑤ AND DEAD END THE LINES TO THE FWD AND AFT BAILS ⑥ ON THE SAIL COVER.

TIE THE AFT END OF THE SAIL COVER UP TO THE TOPPING LIFT LINE USING THE PIECE OF STRING PROVIDED ⑦. USE HALF HITCH KNOTS TO SECURE THE COVER IN PLACE AT THE OUTER END OF THE BOOM. THE REEF LINES RUN OUT THROUGH THE COVER SLOTS ⑧ AND TIE OFF.



Hunter 49

Optional Spinnaker Layout



- 1. SPINNAKER WINCH
- 2. SPINNAKER SHEET
- 3. SPINNAKER SHEET BLOCK
- 4. SPINNAKER TACK LINE CLEAT
- 5. SPINNAKER TACK LINE

SEE PAGES 42A-1&2 FOR SPINNAKER
HALYARD LAYOUT

