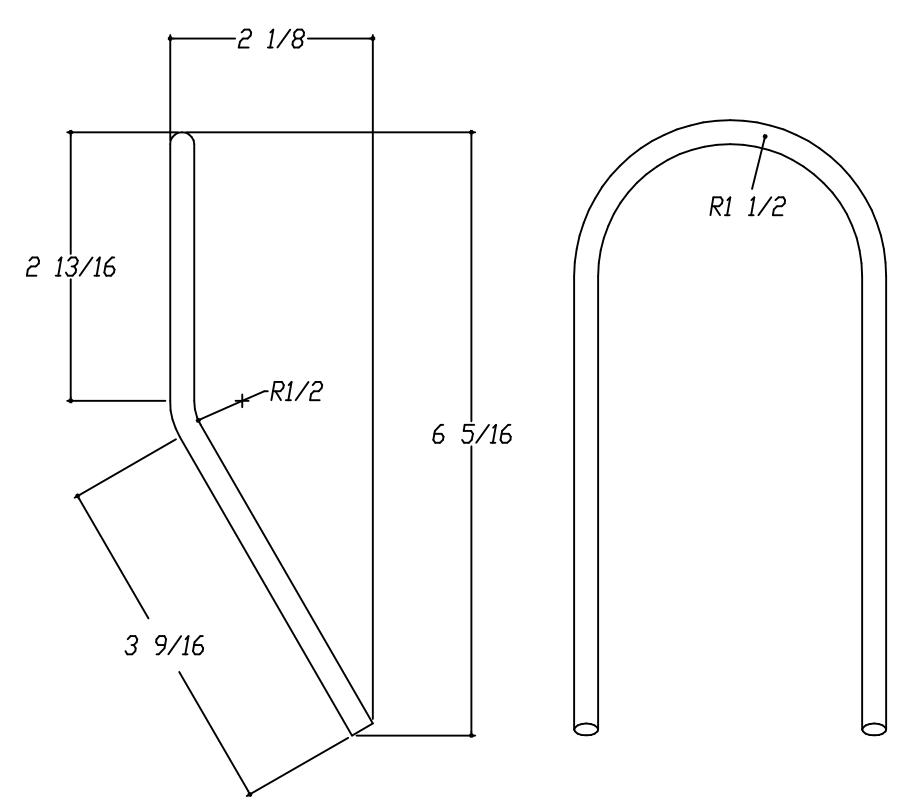
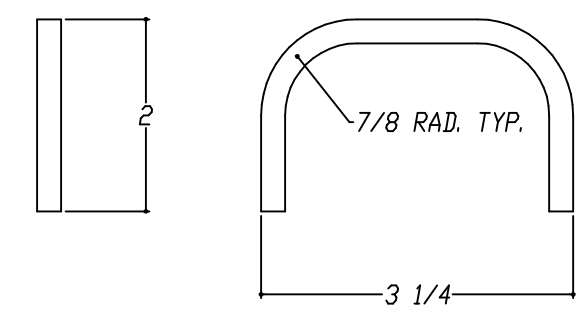


TOP VIEW



FORWARD RETAINER  
MAT'L: 1/4" DIA. S/S ROD



AFT RETAINER  
MAT'L: 1/4" DIA. S/S ROD

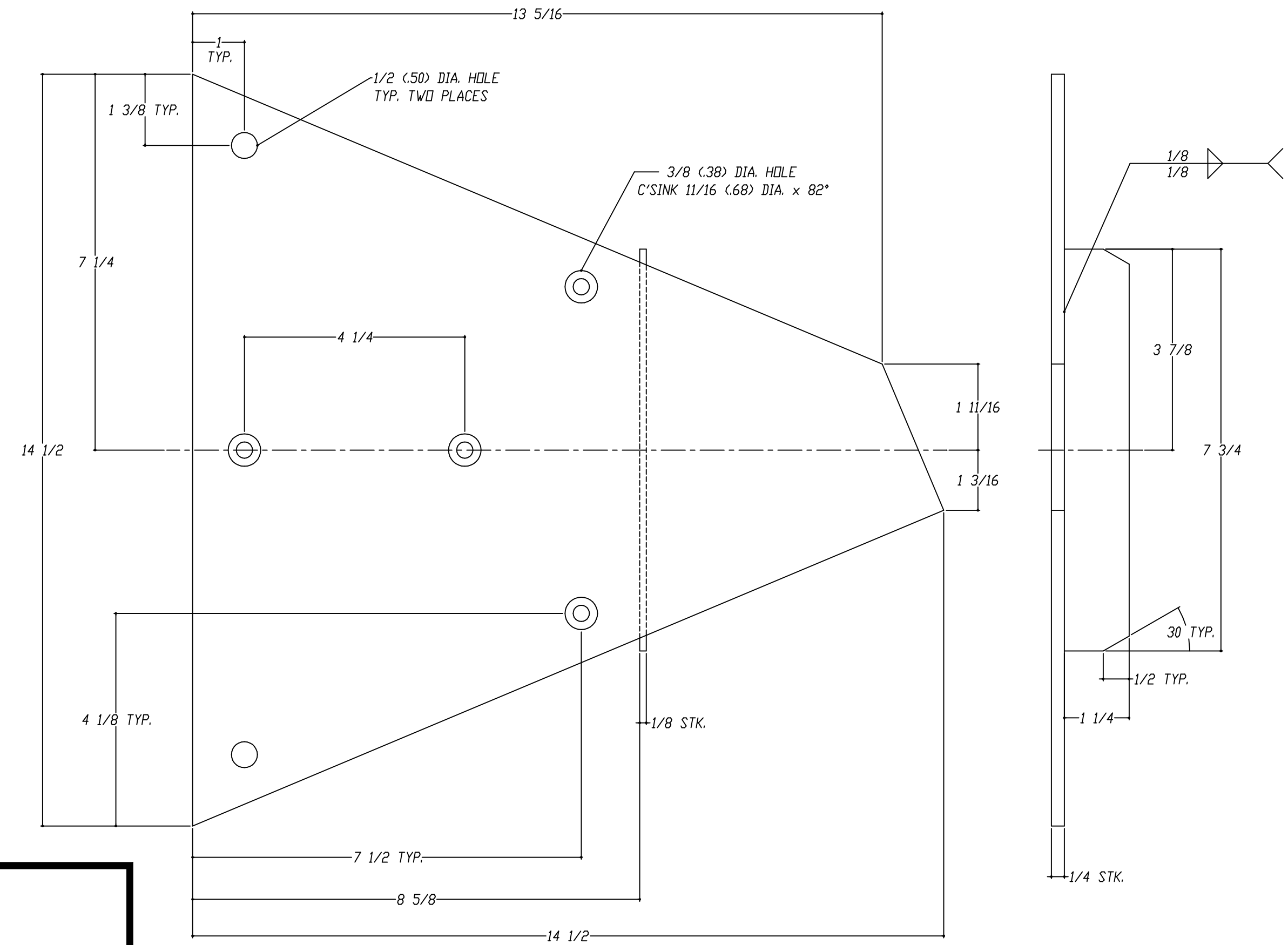
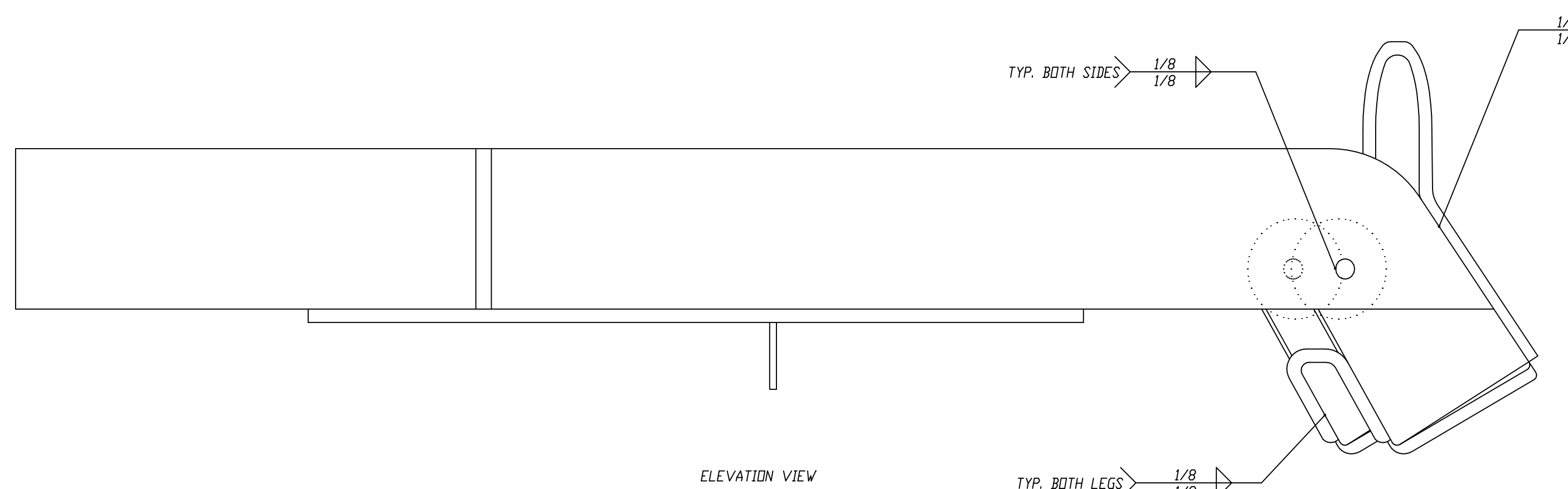
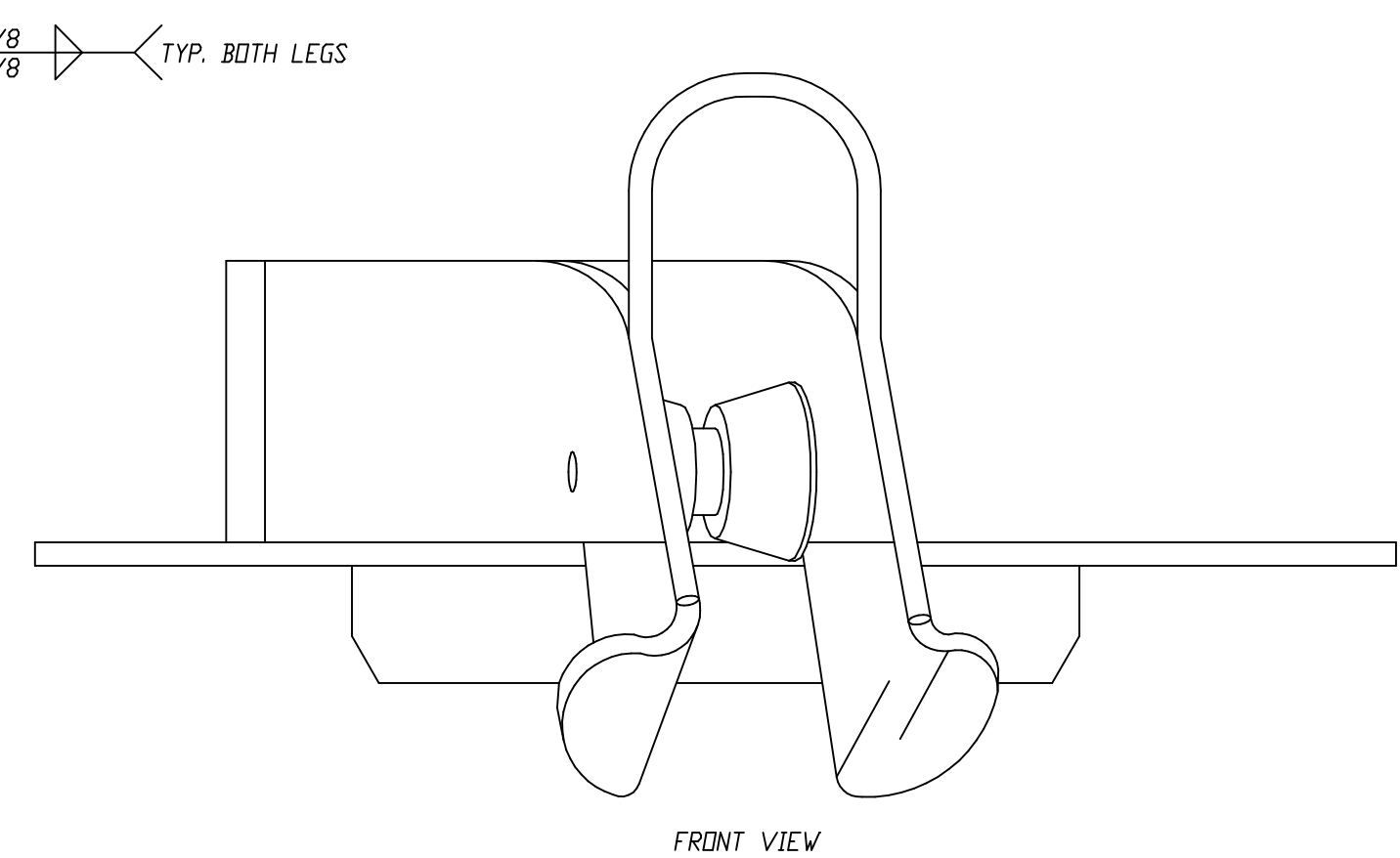


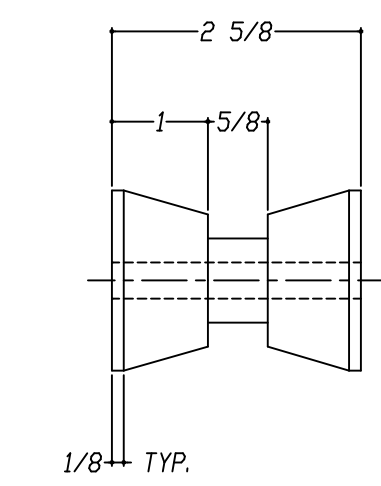
PLATE DETAIL  
MAT'L: 1/4" S/S PLATE  
MAT'L: 1/8" S/S BAR



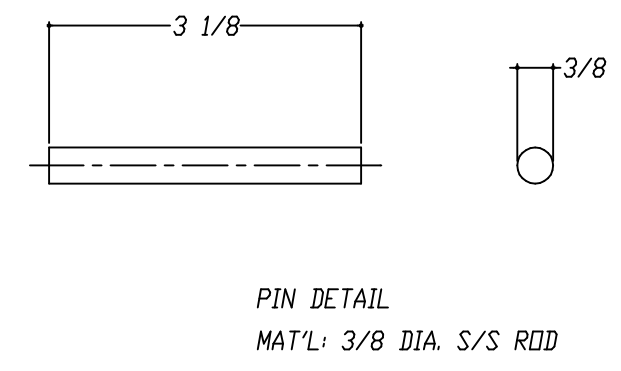
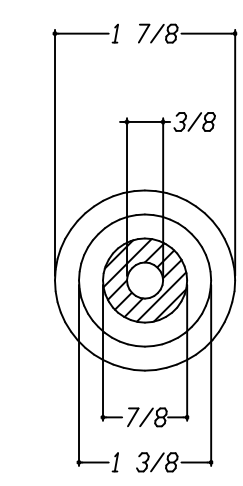
ELEVATION VIEW



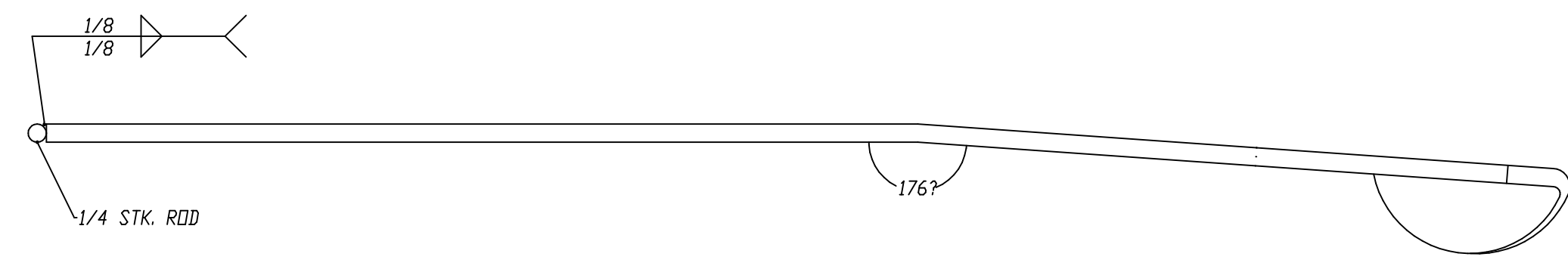
FRONT VIEW



ROLLER DETAIL  
MAT'L: UHMWPE ROD



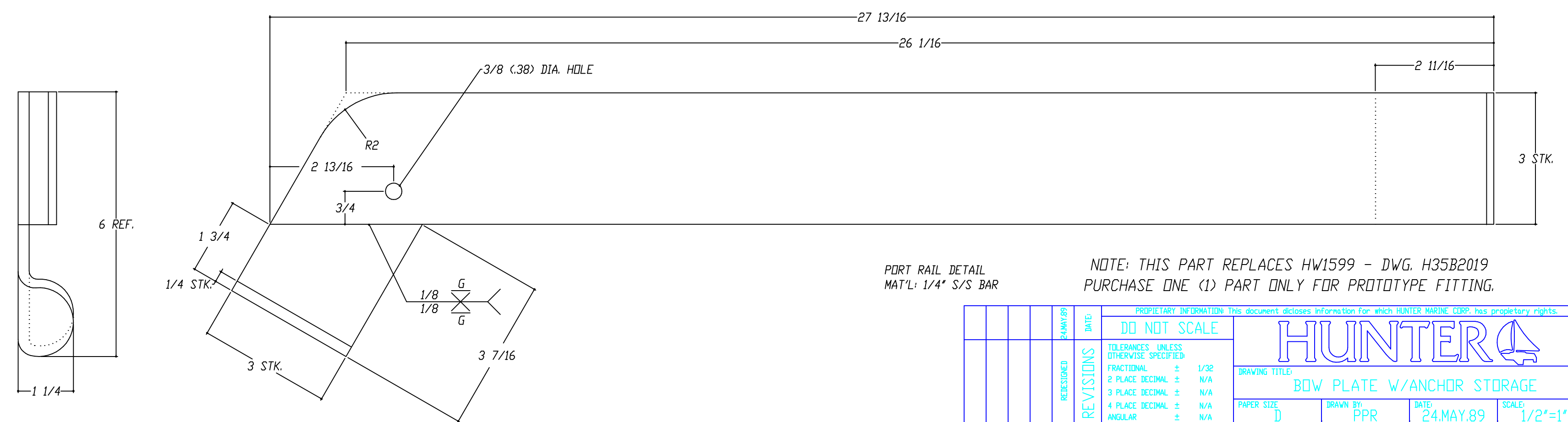
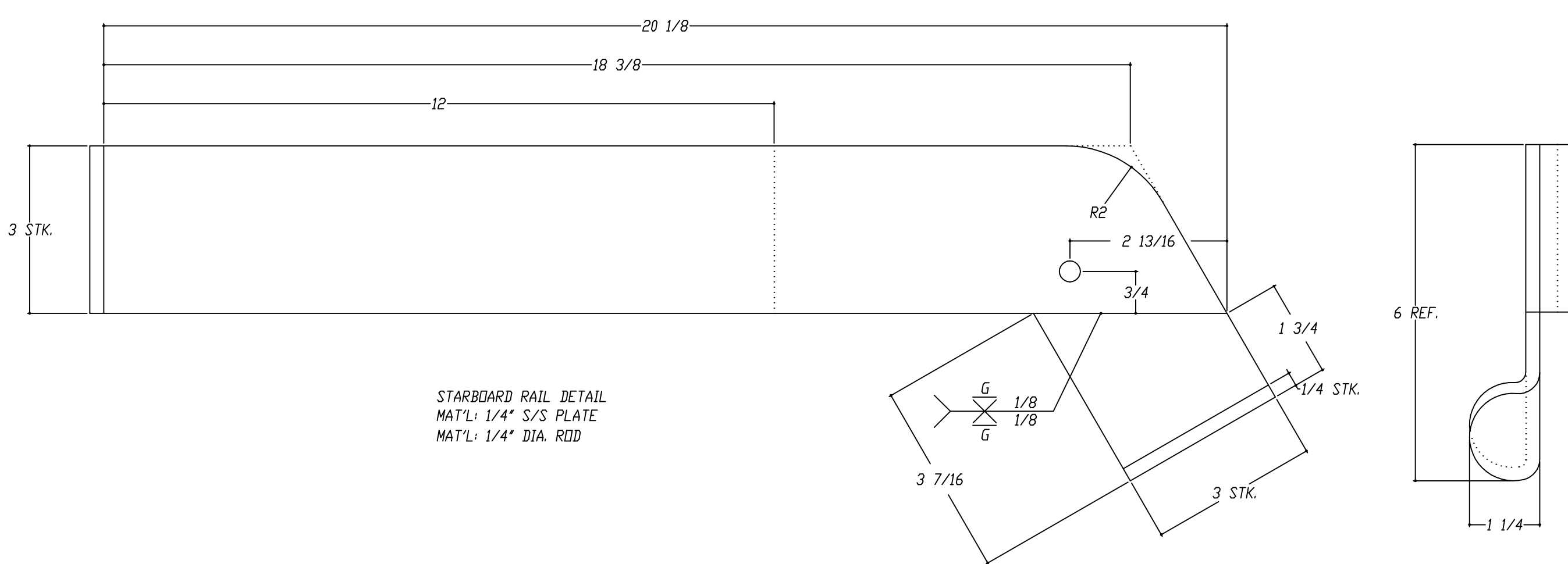
PIN DETAIL  
MAT'L: 3/8 DIA. S/S ROD



STARBOARD RAIL DETAIL  
MAT'L: 1/4" S/S PLATE  
MAT'L: 1/4" DIA. ROD



PORT RAIL DETAIL  
MAT'L: 1/4" S/S BAR



NOTE: THIS PART REPLACES HW1599 - DWG. H35B2019  
PURCHASE ONE (1) PART ONLY FOR PROTOTYPE FITTING.

REV	DATE	DESCRIPTION
A	24 MAY 89	ISSUE FOR PROTOTYPE FITTING

DO NOT SCALE	SCALE: 1/2"=1"
TOLERANCES UNLESS OTHERWISE SPECIFIED:	
FRACTIONAL	± 1/32
2 PLACE DECIMAL	N/A
3 PLACE DECIMAL	N/A
4 PLACE DECIMAL	N/A
ANGULAR	± 1/4
BREAK ALL SHARP EDGES, DEBURR	
FINISH - HIGH POLISH	

DRAWING TITLE: BOW PLATE W/ANCHOR STORAGE	
PAPER SIZE: D	DATE: 24 MAY 89
SCALE: 5=1	SCALE: 1/2"=1"
PROJECT NO: HW1597	DRAWING NO: H35-D-2021