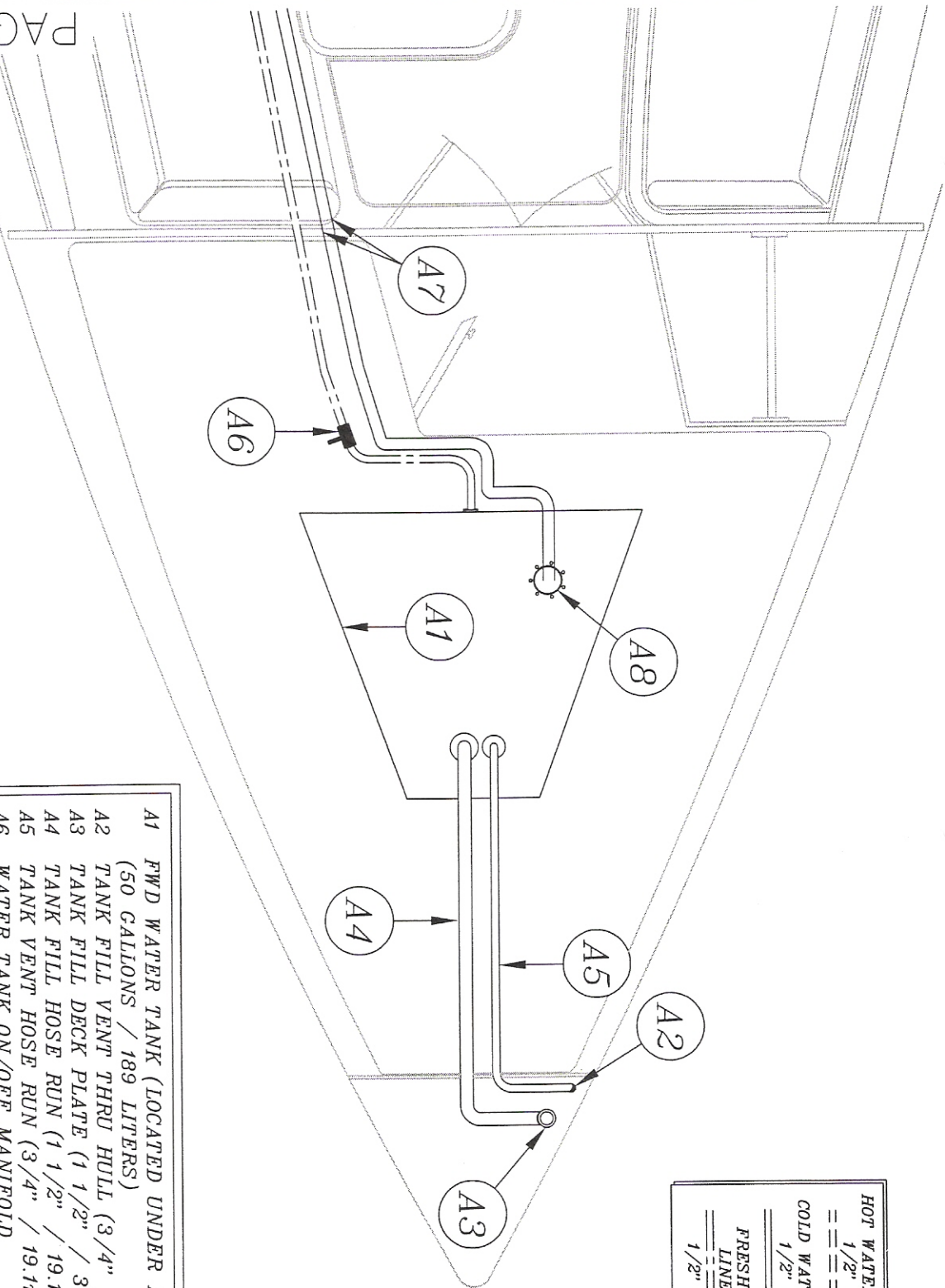


SEE FOLLOWING PAGE FOR THE WATER SYSTEM DESCRIPTIONS.

HOT WATER WHALE LINES (RED)
 =====
 1/2" (12.7mm)
COLD WATER WHALE LINES (COLD)
 =====
 1/2" (12.7mm)
FRESH WATER FEED LINES TO PUMP
 =====
 1/2" (12.7mm)

H326 FRESH WATER SYSTEM LAYOUT		HUNTER
3268057B-1	NONE	
ENGINEERING DEPT.	11/08/99	

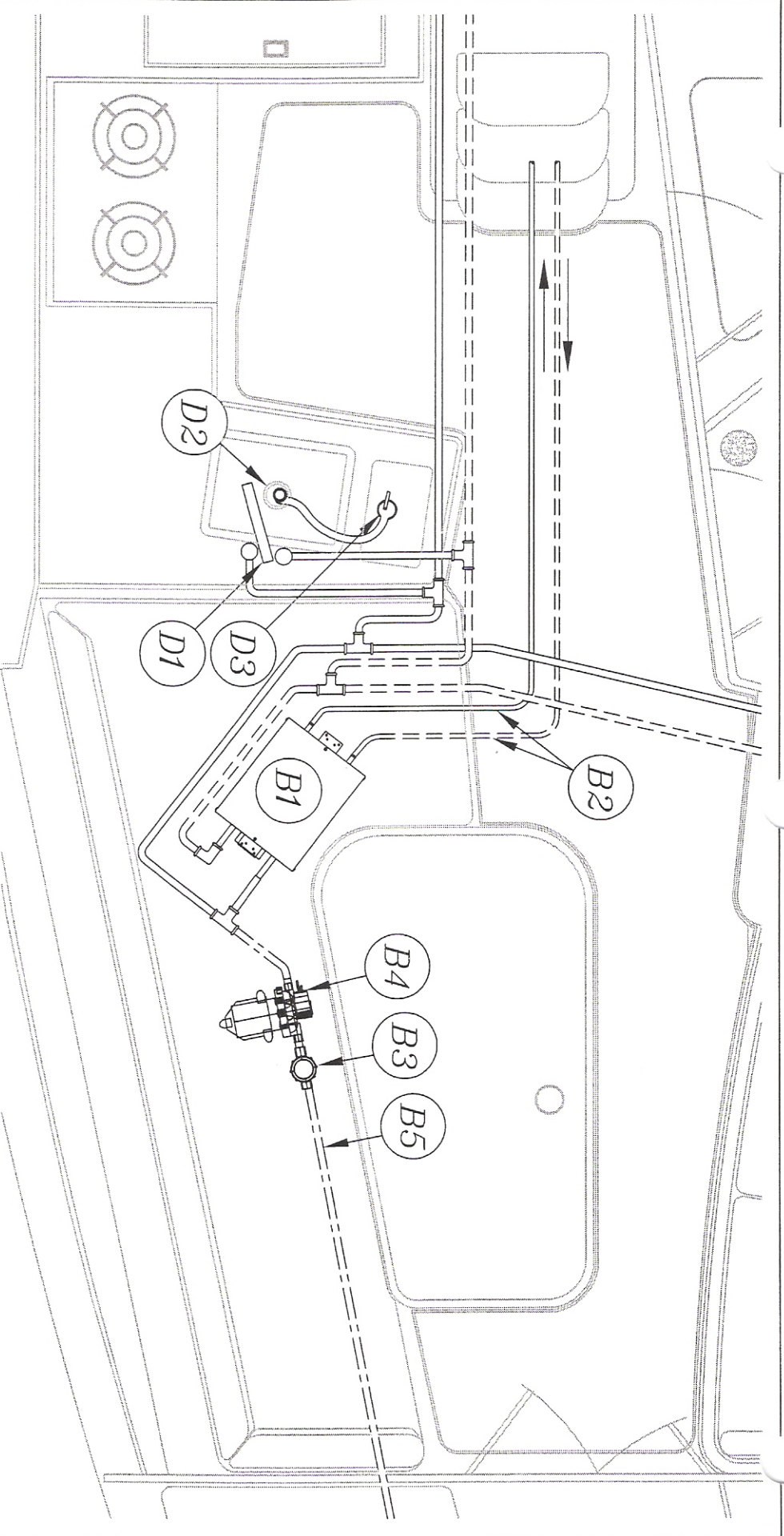


HOT WATER WHALE LINES
 1/2" (12.7mm)
 COLD WATER WHALE LINES
 1/2" (12.7mm)
 FRESH WATER FEED LINES TO PUMP
 1/2" (12.7mm)

- A1 FWD WATER TANK (LOCATED UNDER FWD BERTH) (50 GALLONS / 189 LITERS)
- A2 TANK FILL VENT THRU HULL (3/4" / 19.1mm)
- A3 TANK FILL DECK PLATE (1 1/2" / 38.1mm)
- A4 TANK FILL HOSE RUN (1 1/2" / 19.1mm)
- A5 TANK VENT HOSE RUN (3/4" / 19.1mm)
- A6 WATER TANK ON/OFF MANIFOLD (ACCESS MANIFOLD THRU STBD LOWER FWD V-BERTH CABINET ACCESS PANEL)
- A7 TANK SENDING UNIT POWER / GAUGE LEADS
- A8 TANK SENDING UNIT (ACCESS THRU FWD V-BERTH PANEL)

H326 FWD WATER TANK COMPONENT DETAIL
 326057C-1 NONE
 ENGINEERING DEPT. 11/08/99

HUNTER



HOT WATER WHALE LINES
 1/2" (12.7mm)
 COLD WATER WHALE LINES
 1/2" (12.7mm)
 FRESH WATER FEED
 LINES TO PUMP
 1/2" (12.7mm)

- B1 SYSTEM WATER HEATER (6 GALLONS / 23 LITERS)
- B2 HEAT EXCHANGER LINES RUN TO AND FROM ENGINE
- B3 IN LINE WATER FILTER (LOCATED UNDER STBD AFT MAIN SALON SETTEE)
- B4 12 V.D.C. WATER PUMP (PRESSURIZES THE SYSTEM)
- B5 WATER TANK FEED LINE (1/2" / 12.7mm) (SEE DETAIL PREVIOUS PAGE)
- D1 GALLEY SINK FAUCET
- D2 GALLEY SINK DRAIN HOSE TO DISCHARGE SEACOCK (1 1/2" / 38.1mm)
- D3 GALLEY SINK DRAIN DISCHARGE SEACOCK (1 1/2" / 38.1mm)

H326 WATER PUMP / GALLEY COMPONENTS	
3268057C-2	NONE
ENGINEERING DEPT.	11/08/99

HUNTER