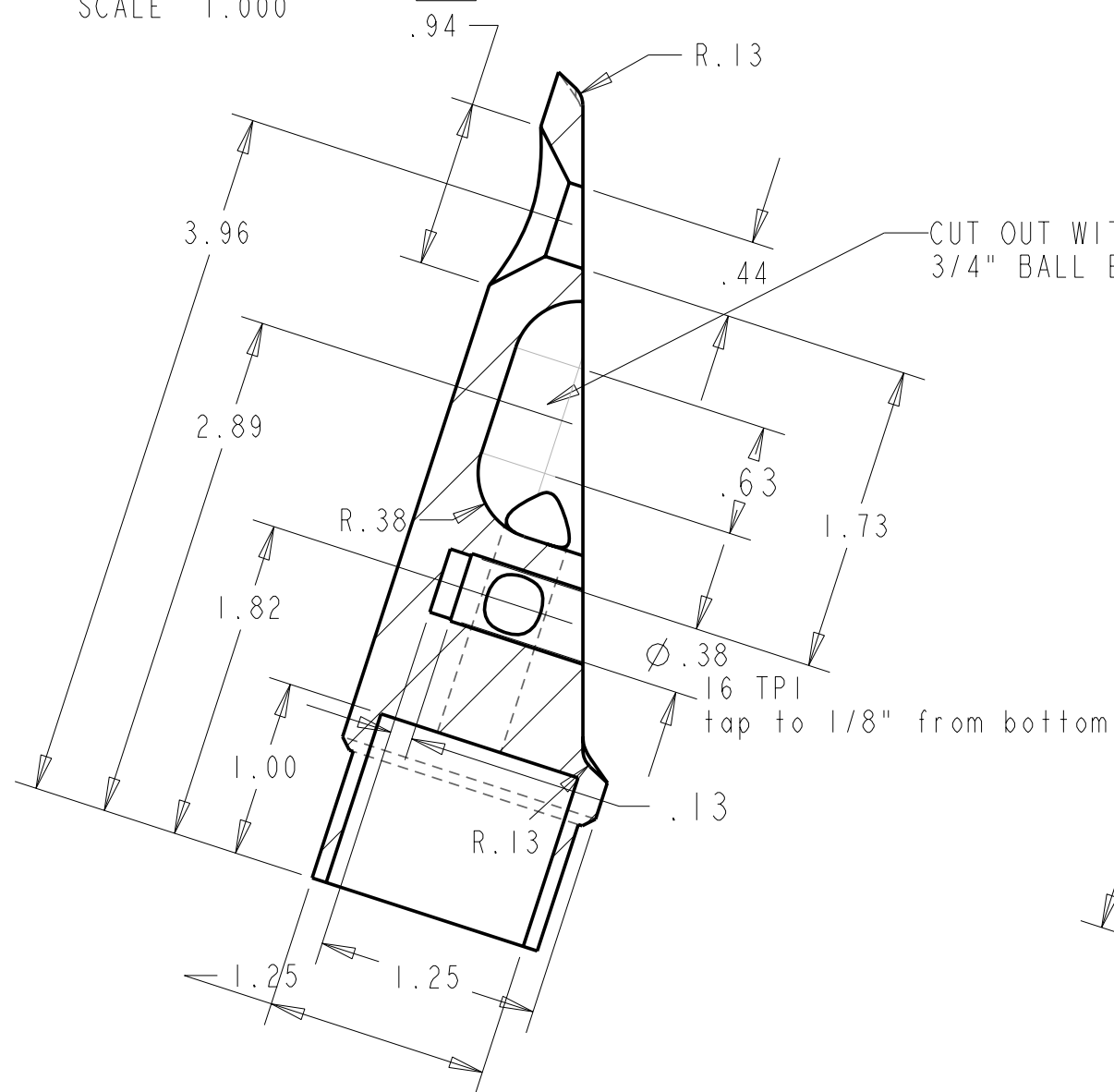
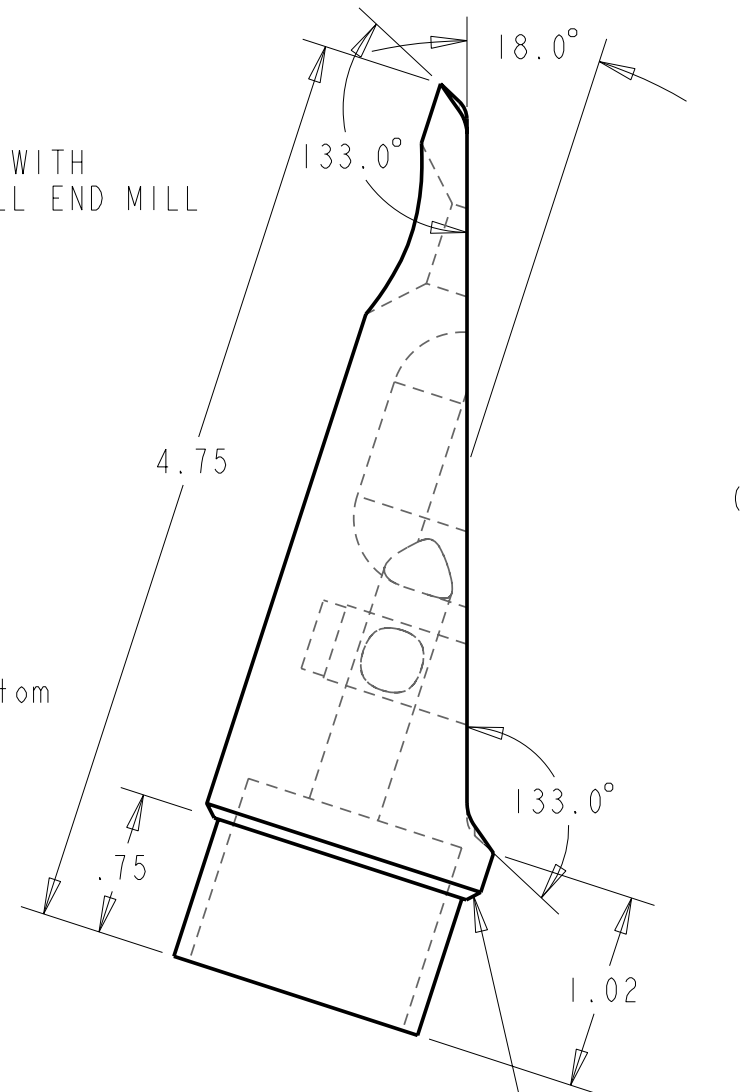


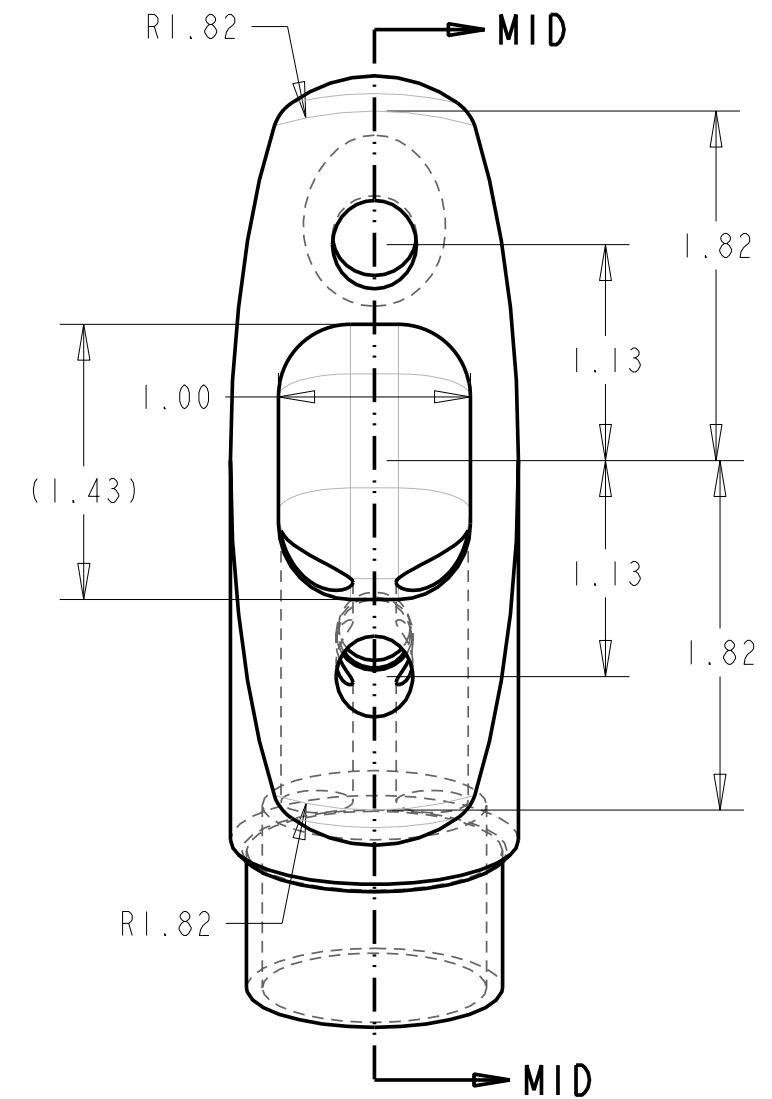
SECTION MID-MID  
SCALE 1.000



CUT OUT WITH  
3/4" BALL END MILL



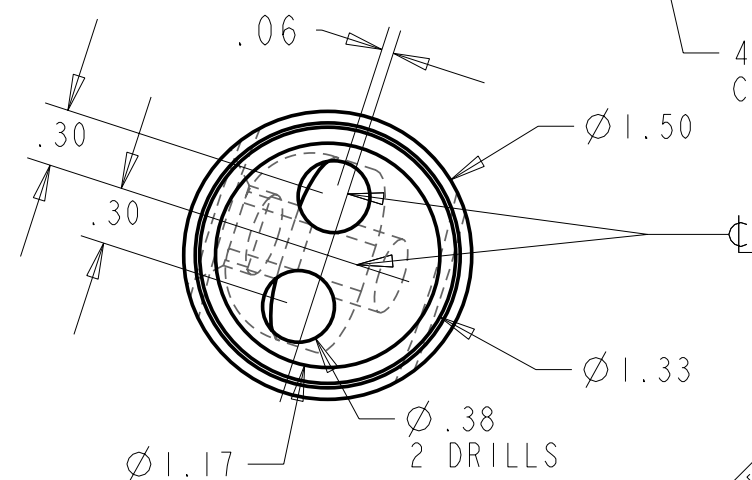
SYMBOL	REVISIONS	DATE	ENG
A	UPDATE COUNTERSINK DIM	11/17/2004	JLK
B	UPDATE COUNTERSINK DIM	11/19/2004	JLK



CAST 1.5" ARCH PART- FWD

NOTES: SCALE=1.000

1. MATERIAL: CAST STAINLESS  
MINIMUM THICKNESS: .083"
2. ALL DIMENSIONS ARE INCHES AND DEGREES
3. ALL WELDS TO MEET AWS STANDARDS.
4. BREAK AND DEBURR ALL EDGES
5. BRIGHT POLISH AFTER FABRICATION
6. 4 PARTS PER BOAT



PROPRIETARY INFORMATION: THIS DRAWING CONTAINS INFORMATION FOR WHICH HUNTER MARINE CORPORATION HAS PROPRIETARY RIGHTS.



HUNTER

30

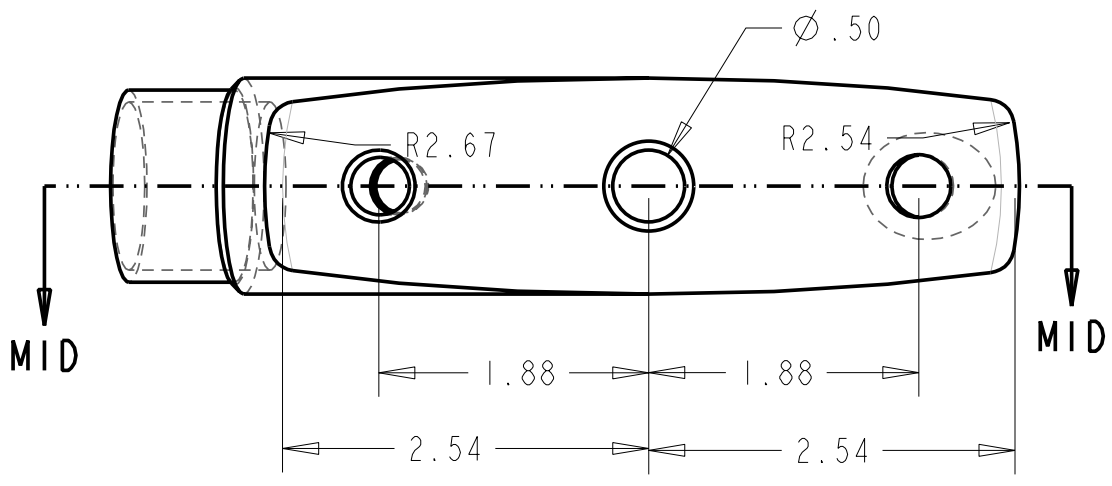
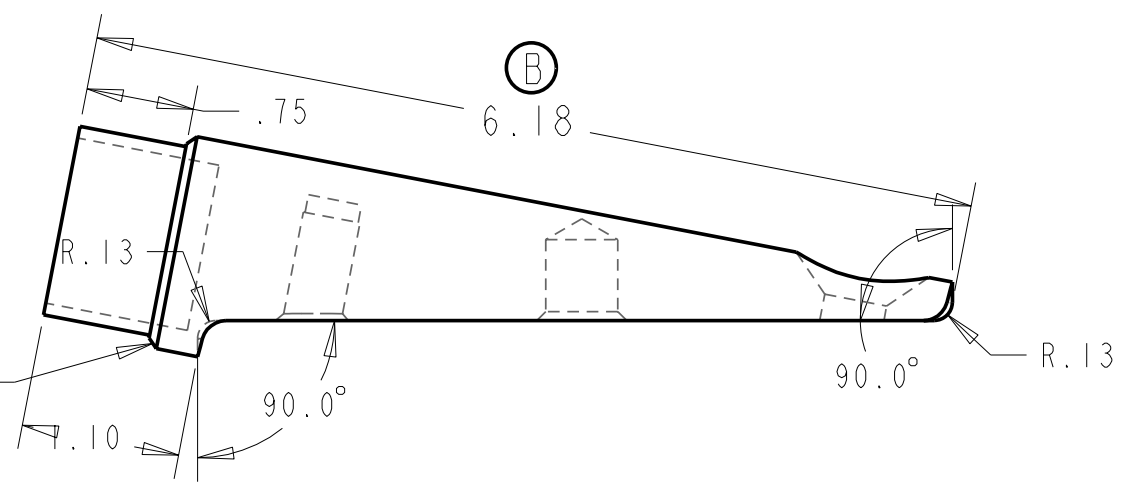
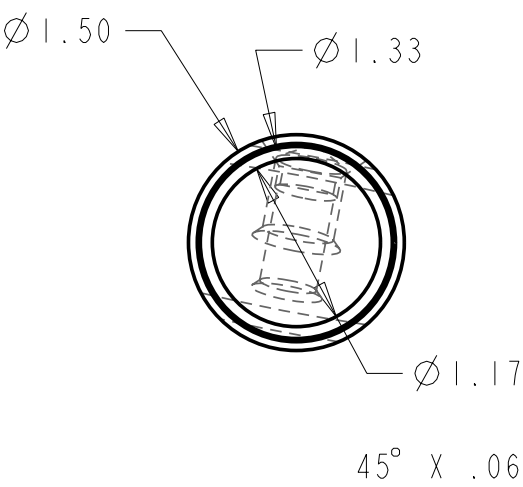
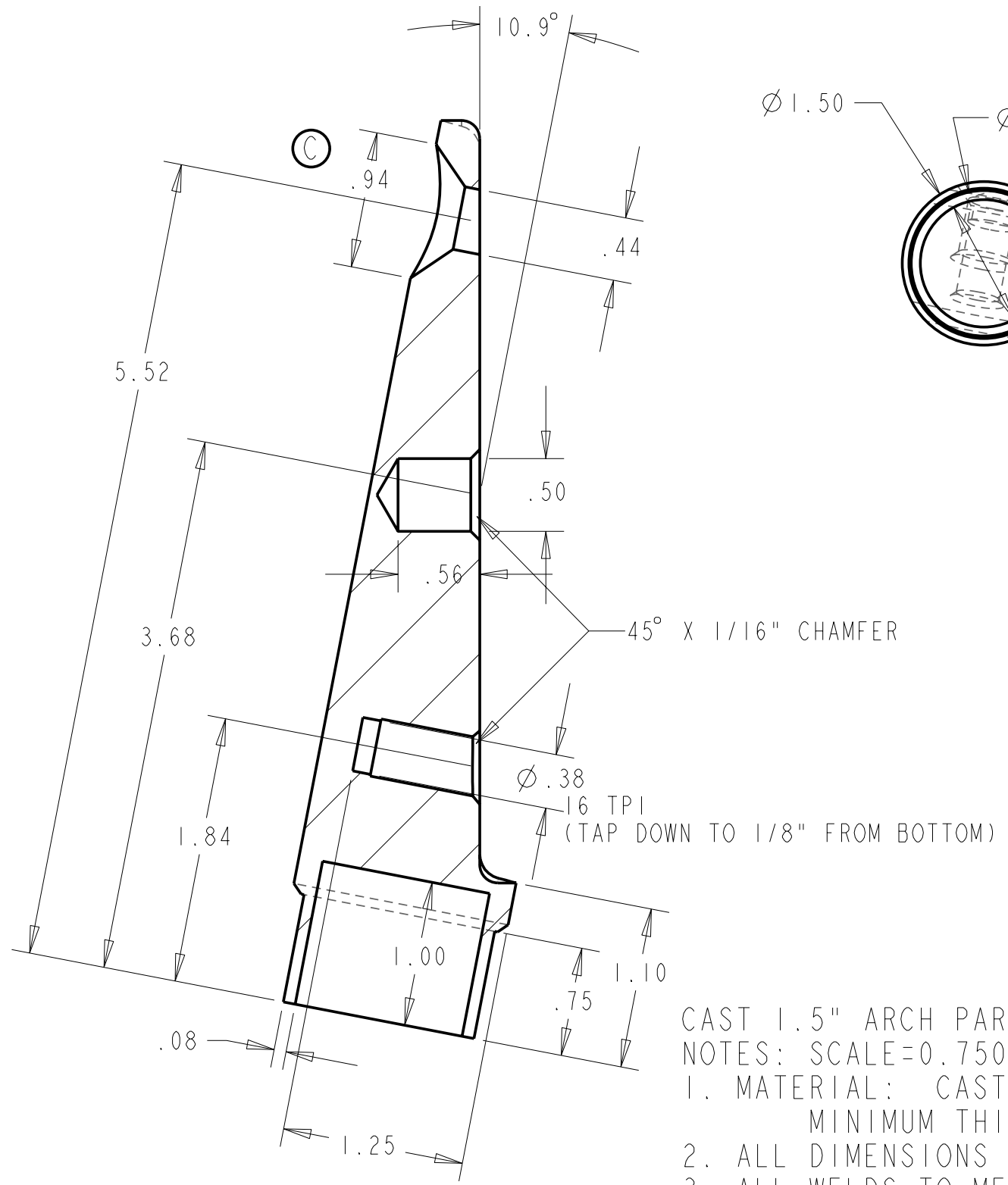
DRAWING TITLE:

**CAST 15" ARCH PART- FWD**

DRAWN BY: <b>JTM</b>	DATE: <b>27-Jul-04</b>	SHEET <b>1</b>	OF <b>4</b>
SCALE: <b>1.000</b>	HUNTER PART NO. <b>TBD</b>	REVISION	DRAW # <b>ARCH FOLD 1-5IN PARTS</b>

CHECKED:


SYMBOL	REVISIONS	DATE	ENG
B	SHORTEN OVERALL HEIGHT BY 3/32" ENLARGE CHAMFER TO Ø 1 1/16"	11/4/04	JTM
C	UPDATE COUNTERSINK DIM	11/19/2004	JLK



SECTION MID-MID  
SCALE 1.000

- CAST 1.5" ARCH PART- AFT  
NOTES: SCALE=0.750
1. MATERIAL: CAST STAINLESS STEEL  
MINIMUM THICKNESS: .083"
  2. ALL DIMENSIONS ARE INCHES AND DEGREES
  3. ALL WELDS TO MEET AWS STANDARDS.
  4. BREAK AND DEBURR ALL EDGES
  5. BRIGHT POLISH AFTER FABRICATION
  6. 4 PARTS PER BOAT

PROPRIETARY INFORMATION: THIS DRAWING CONTAINS INFORMATION FOR WHICH HUNTER MARINE CORPORATION HAS PROPRIETARY RIGHTS.



**HUNTER** 30

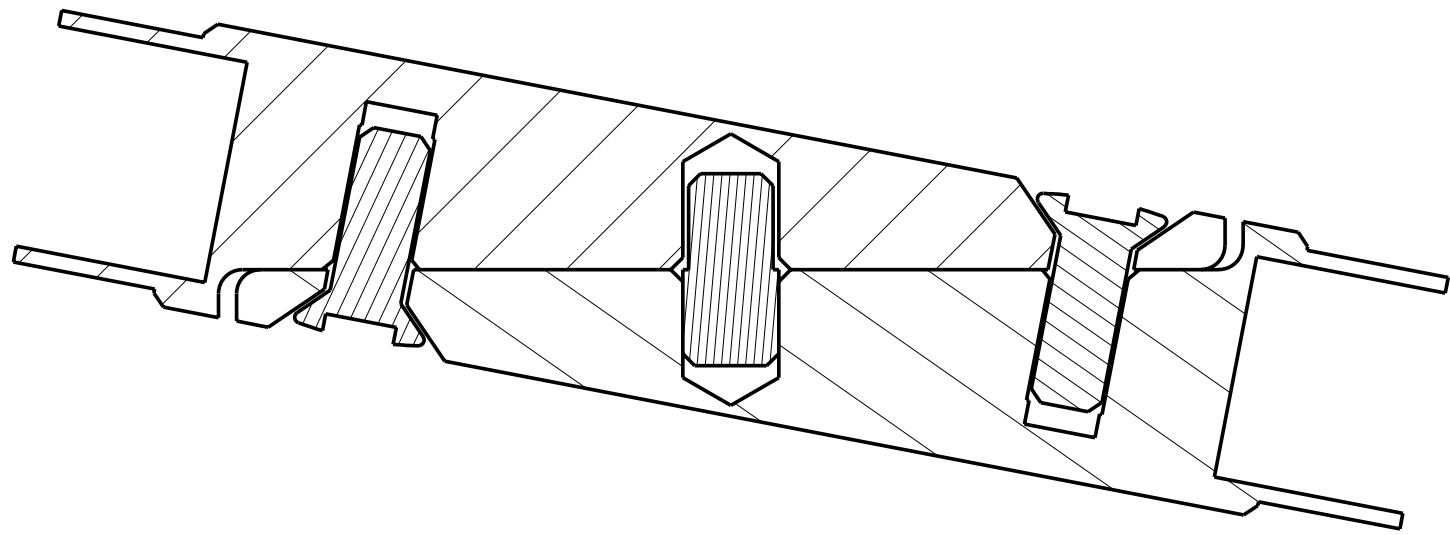
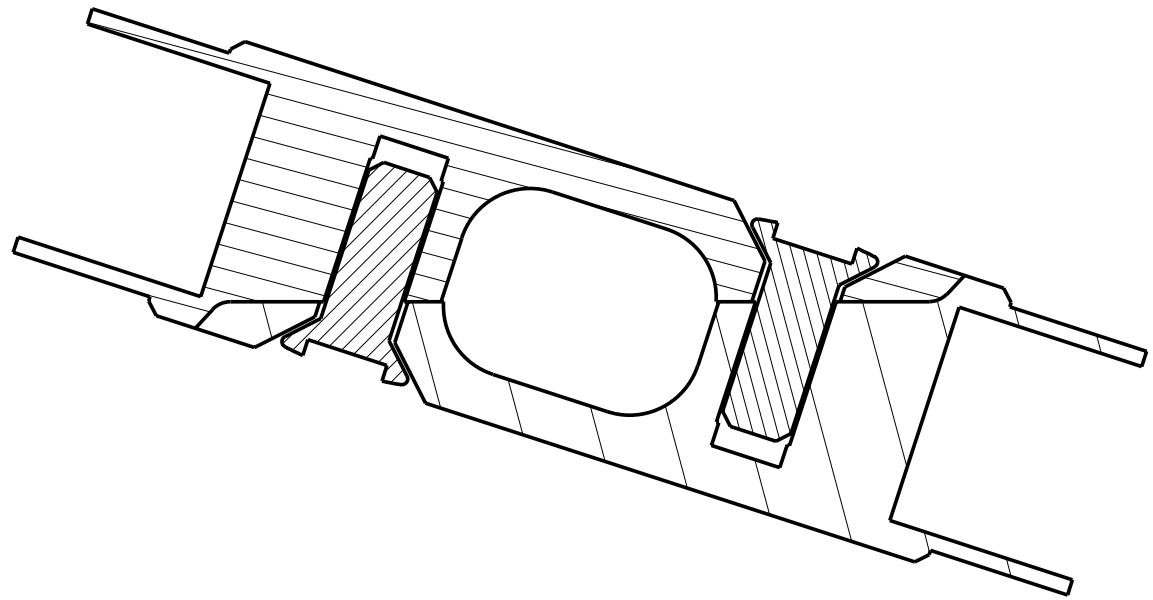
DRAWING TITLE:  
**CAST 15" ARCH PART- AFT**

DRAWN BY: **JTM** DATE: **27-Jul-04** SHEET **2** OF **4**

SCALE: **0.750** HUNTER PART NO. **TBD** REVISION DRAW #  
**ARCH FOLD 1-5IN PARTS**

CHECKED:

SYMBOL	REVISIONS	DATE	ENG



SECTION FITMENT-FITMENT  
SCALE 1.000

PROPRIETARY INFORMATION: THIS DRAWING CONTAINS INFORMATION FOR WHICH HUNTER MARINE CORPORATION HAS PROPRIETARY RIGHTS.



HUNTER

30

DRAWING TITLE:

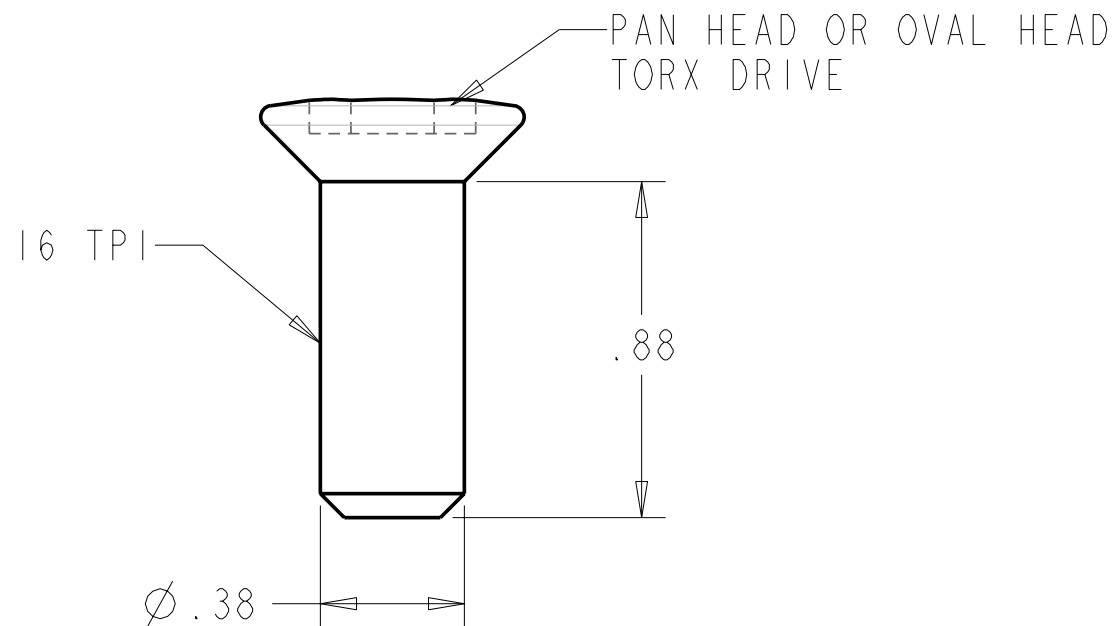
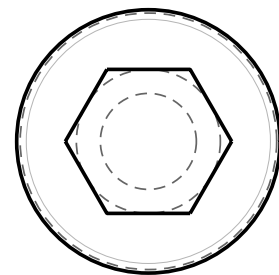
**ARCH FOLD 15"- ASSEMBLY**

DRAWN BY:	JTM	DATE:	27-Jul-04	SHEET	3	OF	4
SCALE:	0.333	HUNTER PART NO.:	TBD	REVISION:	-	DRAW #	ARCH FOLD 15IN PARTS

CHECKED:

SYMBOL	REVISIONS	DATE	ENG

TORX BOLT

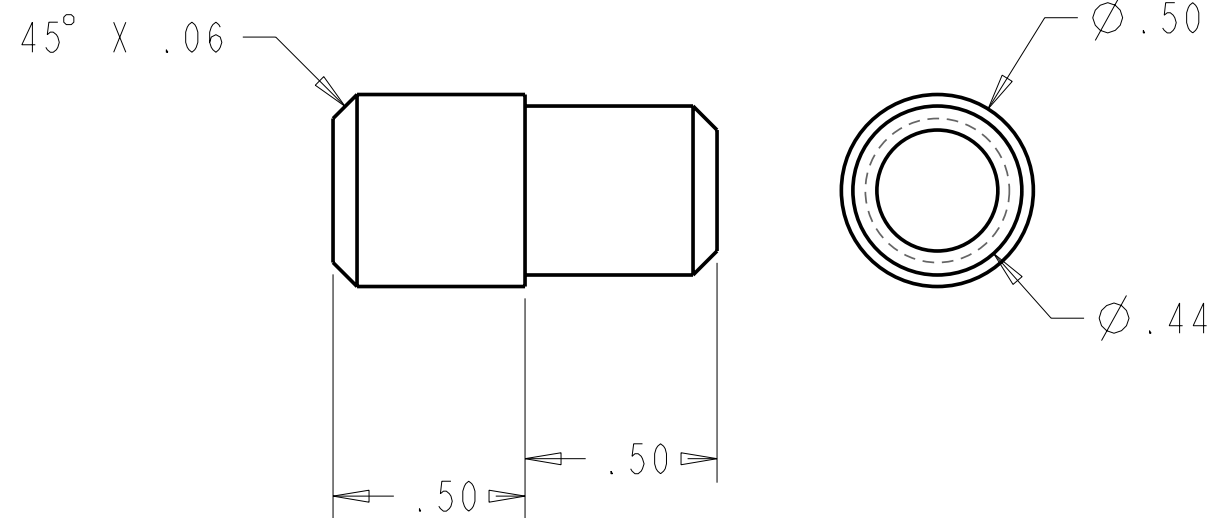


TORX BOLT 3/8" x 1"

NOTES: SCALE=2.000

1. MATERIAL: STAINLESS STEEL
2. ALL DIMENSIONS ARE INCHES AND DEGREES
3. ALL WELDS TO MEET AWS STANDARDS.
4. BREAK AND DEBURR ALL EDGES
5. BRIGHT POLISH AFTER FABRICATION
6. 8 PARTS PER BOAT

PIVOT STUD



ARCH PIVOT STUD

NOTES: SCALE=2.000

1. MATERIAL: STAINLESS STEEL
2. ALL DIMENSIONS ARE INCHES AND DEGREES
3. ALL WELDS TO MEET AWS STANDARDS.
4. BREAK AND DEBURR ALL EDGES
5. BRIGHT POLISH AFTER FABRICATION
6. 2 PARTS PER BOAT

PROPRIETARY INFORMATION: THIS DRAWING CONTAINS INFORMATION FOR WHICH HUNTER MARINE CORPORATION HAS PROPRIETARY RIGHTS.



HUNTER

30

DRAWING TITLE:

**TORX BOLT 3/8" x 1" & STUD**

DRAWN BY:

JTM

DATE:

05-Aug-04

SHEET

4

OF

4

SCALE:

2.000

HUNTER PART NO.

TBD

REVISION

DRAW #

ARCH FOLD 1-5IN PARTS

CHECKED: