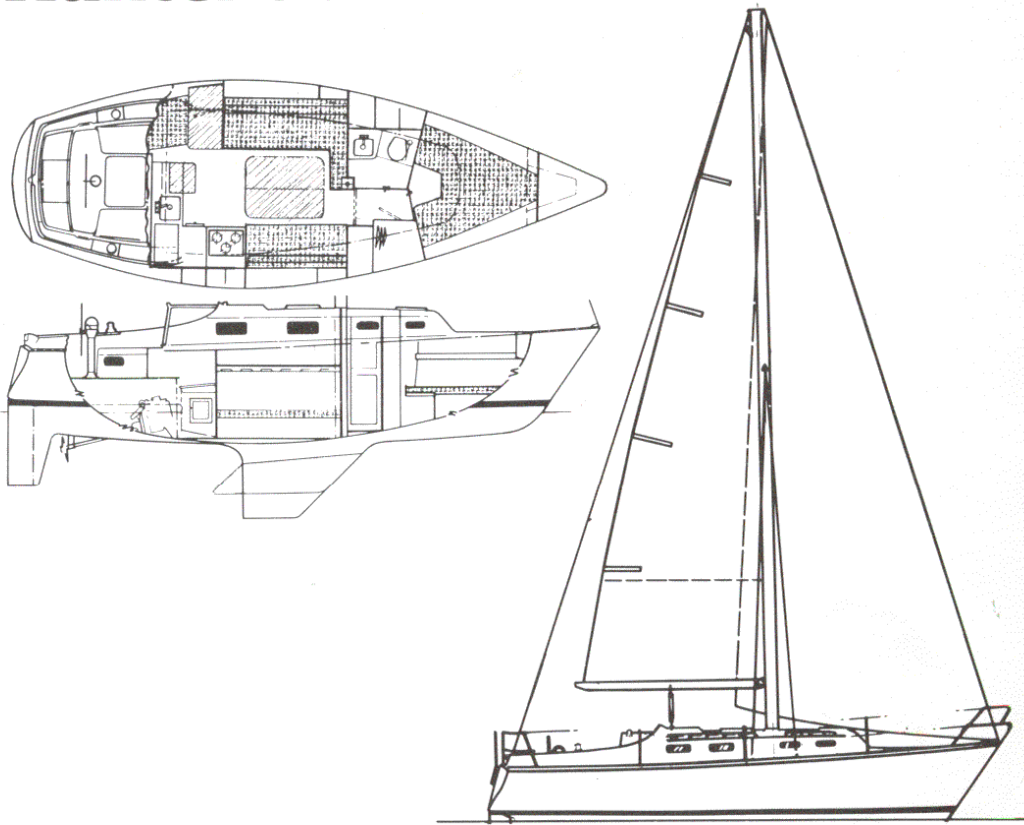


-- Drawings on Below Pages for Cherubini Hunter 30 and 33 -- From the Original Hunter Owner's Manual

Hunter 30

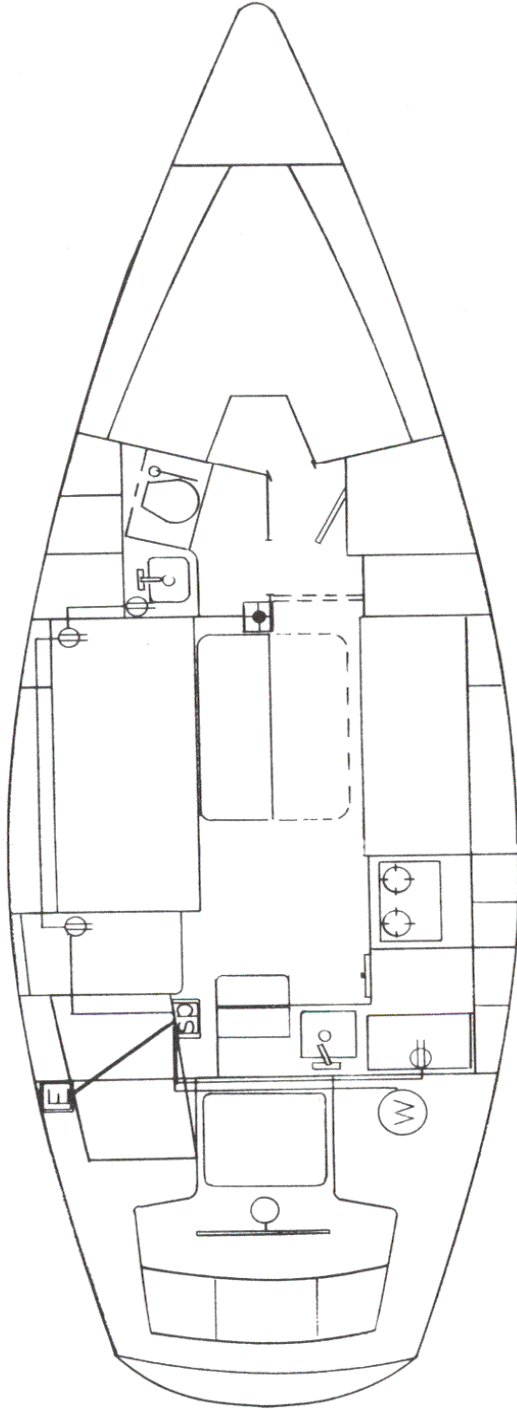








SPECIFICATIONS:

E (Mainsail foot)	10'9"	3.28 m.
J (Foretriangle base)	12'10"	3.91 m.
P (Mainsail luff)	37'0"	11.28 m.
I (Foretriangle ht.)	42'0"	17.80 m.
L.O.A.	29'11 1/2"	9.09 m.
L.W.L.	25'9"	7.83 m.
Beam	10'1 1/2"	3.04 m.
Sail area	473.1 sq. ft.	43.95 sq. m.
Displacement	9,700 lbs.	4,399.9 kg.
Ballast	Shoal 4,000 lbs.	1,816.00 kg.
	Deep 4,000 lbs.	1,816.00 kg.
Draft	Shaft 4'0"	1.20 m.
	Deep 5'3"	1.50 m.
	Mast height	40'6"
from waterline	47'0"	14.33 m.
Headroom	6'4"	1.90 m.

Hunter 30

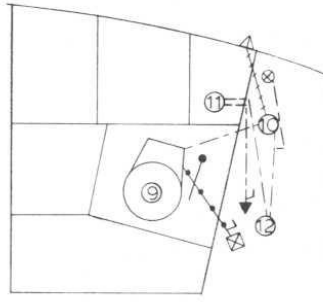
WIRING DIAGRAM (AC)



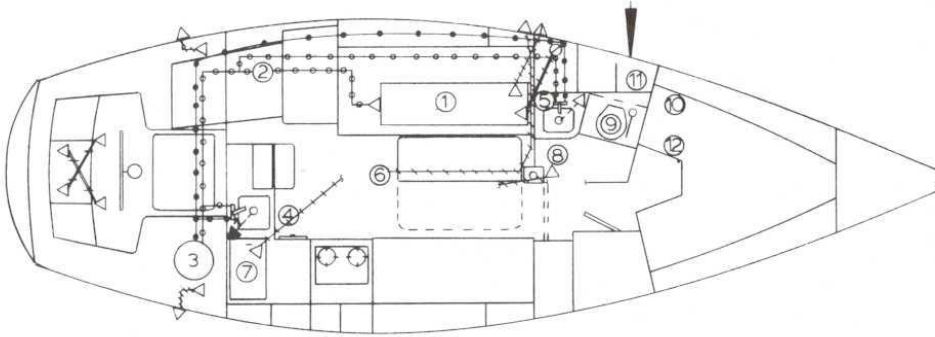
- LEGEND:**
-  ELECTRICAL DECK PLATE
 -  SWITCH PANEL
 -  WATER HEATER
 -  110v OUTLET
 -  10/3 MARINE POWER CABLE (AC SUPPLY)
 -  14/3 MARINE POWER CABLE (TO OUTLETS/WATER HEATER)

Hunter 30

PLUMBING DIAGRAM



HEAD DETAIL
 ●—● 3/4" BLK. HOSE

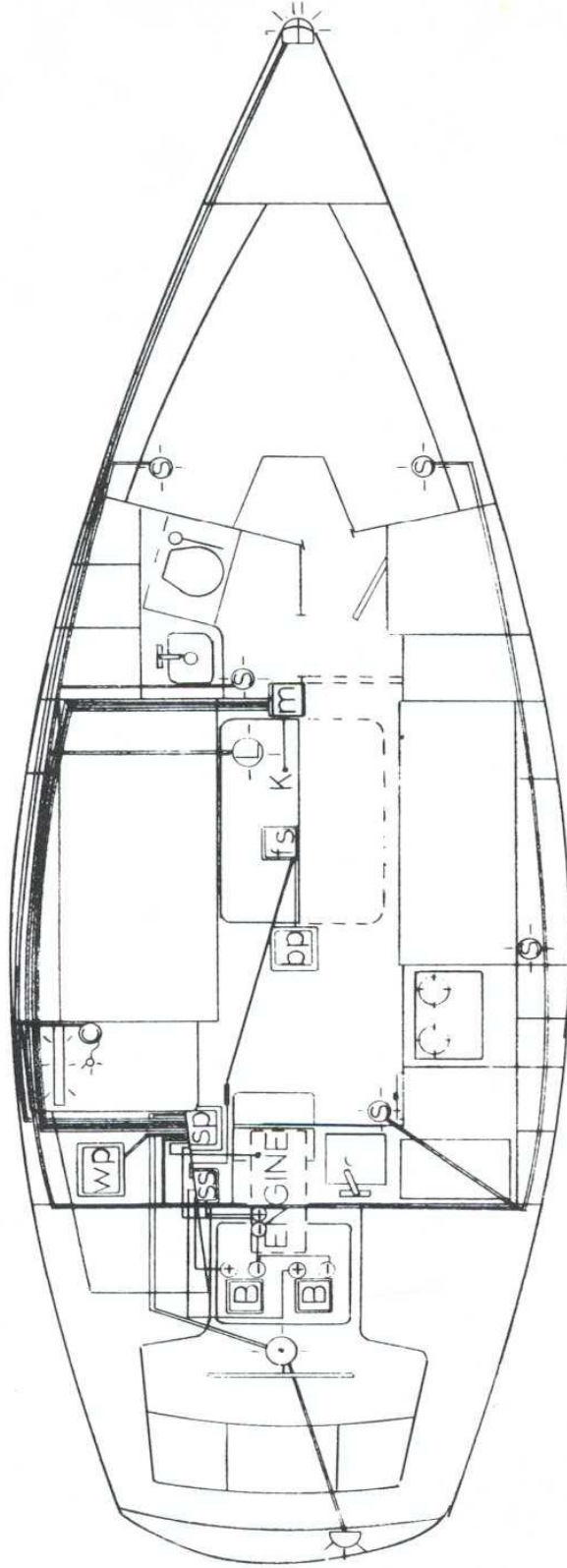


LEGEND:	HOSES & FITTINGS:
① WATER TANK	—●—● 5/8" WH. HOSE (COLD WATER)
② WATER PUMP	—●—● 5/8" WH. HOSE (HOT WATER)
③ WATER HEATER	—●—● 3/4" SHIELDVAC (W/CUFFS)
④ GALLEY	—●—● 1-1/2" SHIELDVAC (W/CUFFS)
⑤ VANITY	—●—● 1-1/4" SHIELDFLEX (GREEN)
⑥ BILGE PUMP (ELEC.)	—●—● 1-1/2" SHIELDFLEX (GREEN)
⑦ ICEBOX	△ THRU HULL (PLASTIC)
⑧ SHOWER	▲ THRU HULL (BRONZE)
⑨ HEAD	⊗ DECK PLATE (WATER)
⑩ HOLDING BAG	⊗ DECK PLATE (WASTE)
⑪ 1-1/2" VENTED LOOP (BRONZE)	⊗ SALT WATER PICKUP
⑫ WASTE PUMP (MANUAL)	△ WATER & WASTE VENTS
	7 GATE VALVE

SUBSYSTEMS:
 FRESH WATER
 WASTE DISPOSAL
 DRAINS

Hunter 30

WIRING DIAGRAM (DC)



DC SUPPLY TO SWITCH PANEL

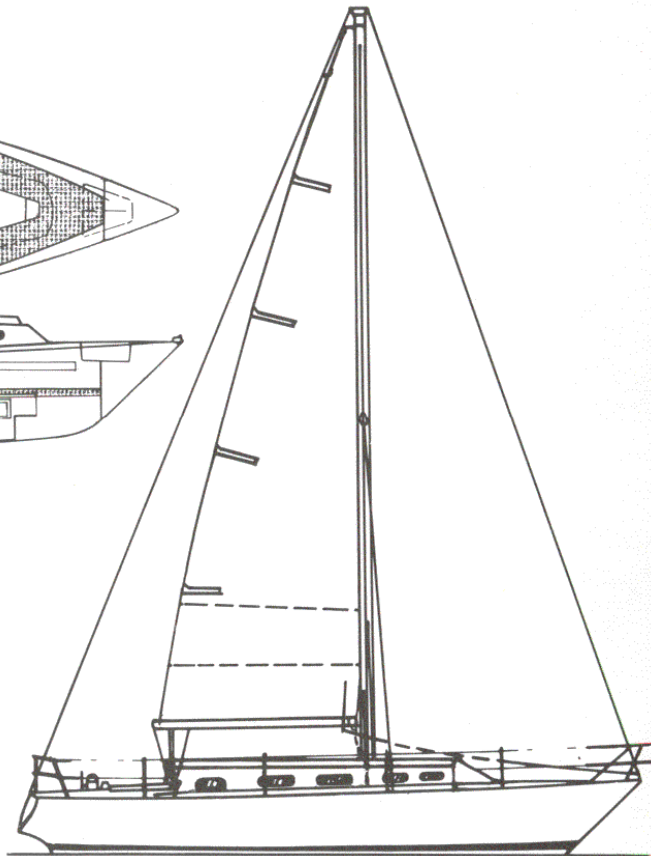
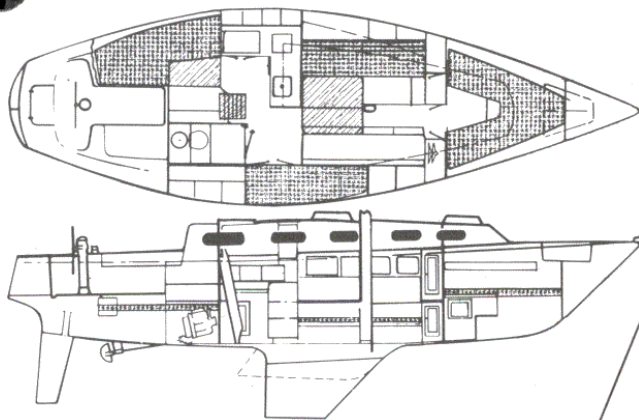
LEGEND:

- B BATTERY (2-72 A.)
- SP SWITCH PANEL
- SS SAFETY MAIN SWITCH
- WP WATER PUMP
- BP BILGE PUMP (750 GPH)
- FS FLOAT SWITCH
- M MAST
- K KEEL

- SM. ROUND LIGHT
- LG. ROUND LIGHT
- LG. FLOOR LIGHT
- SM. FLOOR LIGHT
- CHART LIGHT
- IN-LINE FUSE
- FLOOR LIGHT AT CHART TABLE IS RED.

WIRING NOTES:	COLOR	GAUGE	APPLICATION
	RED	4	BATTERY CABLE/SAFETY MAIN SW.
	WHITE	8	MAST GROUND
	RED	10	DC SUPPLY TO SWITCH PANEL
	RED	12	WATER PUMP
	BLUE	16	CABIN LIGHTS
	WHITE	16	RUNNING LIGHTS (BOW)
	"	"	" (STERN/COMPASS)
	GREEN	16	STEAMING LIGHTS
	RED	16	ANCHOR LIGHT
	BROWN	16	BILGE PUMP
	TAN	16	BILGE FLOAT SWITCH
● ALL LEADS (EXCEPT FLOAT SWITCH AND MAST GRD) ARE RUN WITH BLACK GROUND OF EQUAL GAUGE. THESE ARE CONNECTED TO A COMMON GROUND AT THE SWITCH PANEL WHICH IS GROUND TO THE ENGINE WITH A 10 GAUGE BLACK WIRE.			

Hunter 33

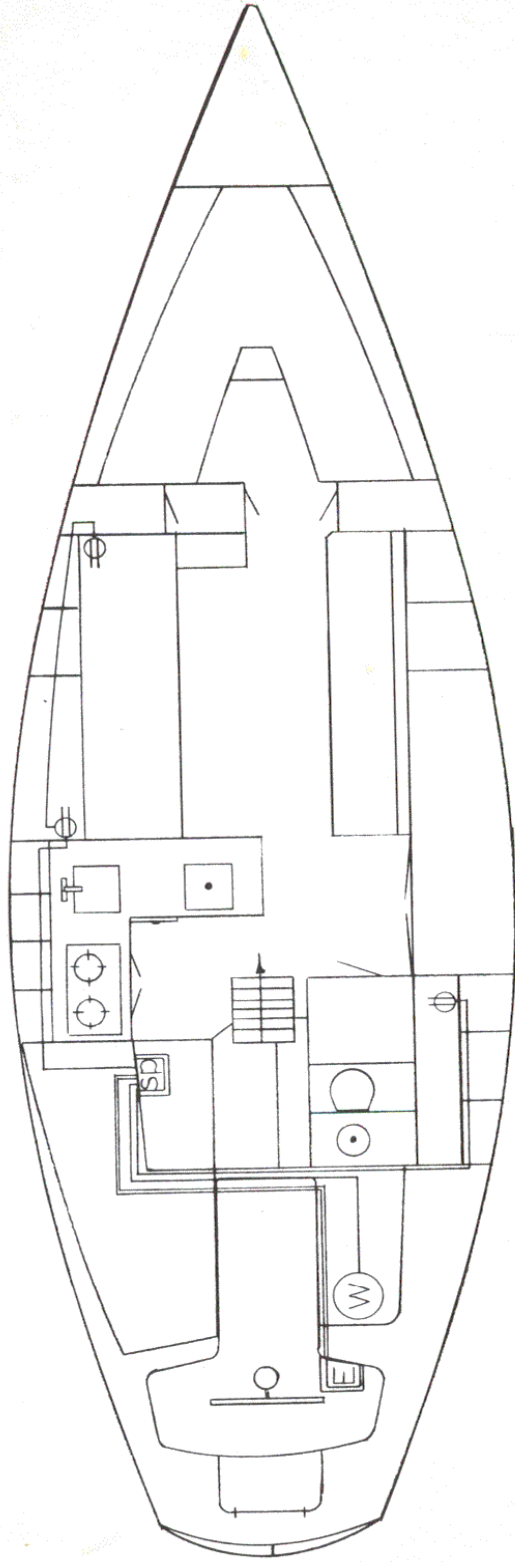


SPECIFICATIONS:

E (Mainsail foot)	10'9"	3.82 m.
J (Foretriangle base)	14'0"	4.40 m.
P (Mainsail luff)	37'1"	11.23 m.
I (Foretriangle ht.)	42'6"	12.95 m.
L.O.A.	32'8"	9.90 m.
L.W.L.	27'1"	8.23 m.
Beam	10'1½"	41.10 m.
Sail area	496.7 sq. ft.	46.97 sq. m.
Displacement	10,600 lbs.	4,808.16 kg.
Ballast	Shoal 4,300 lbs.	1,952.20 kg.
	Deep 4,100 lbs.	1,862.40 kg.
Draft	Shoal 4'0"	1.20 m.
	Deep 5'3"	1.576 m.
Mast height from waterline	41'0"	12.50 m.
	47'3"	13.78 m.
Headroom	6'4"	1.90 m.

Hunter 33

WIRING DIAGRAM (AC)

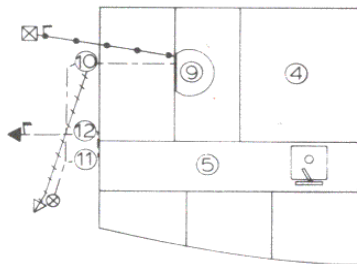
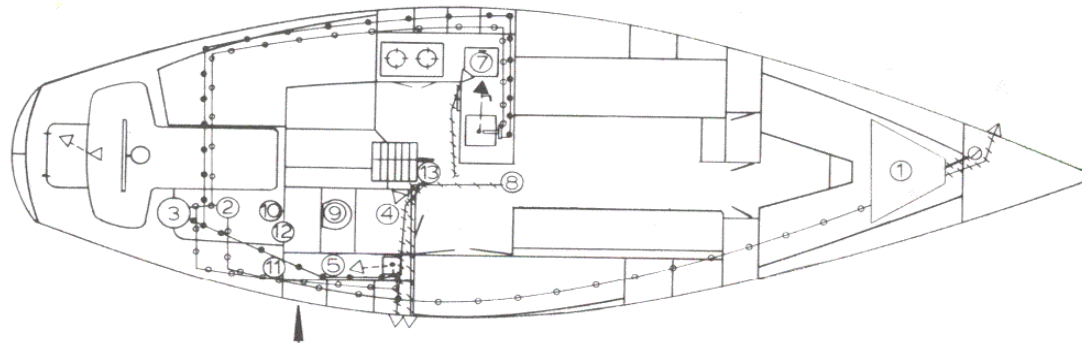


LEGEND:

	ELECTRICAL DECK PLATE
	SWITCH PANEL
	WATER HEATER
	110V OUTLET
	10/3 MARINE POWER CABLE (AC SUPPLY)
	14/3 MARINE POWER CABLE (TO OUTLETS/WATER HEATER)

Hunter 33

PLUMBING DIAGRAM



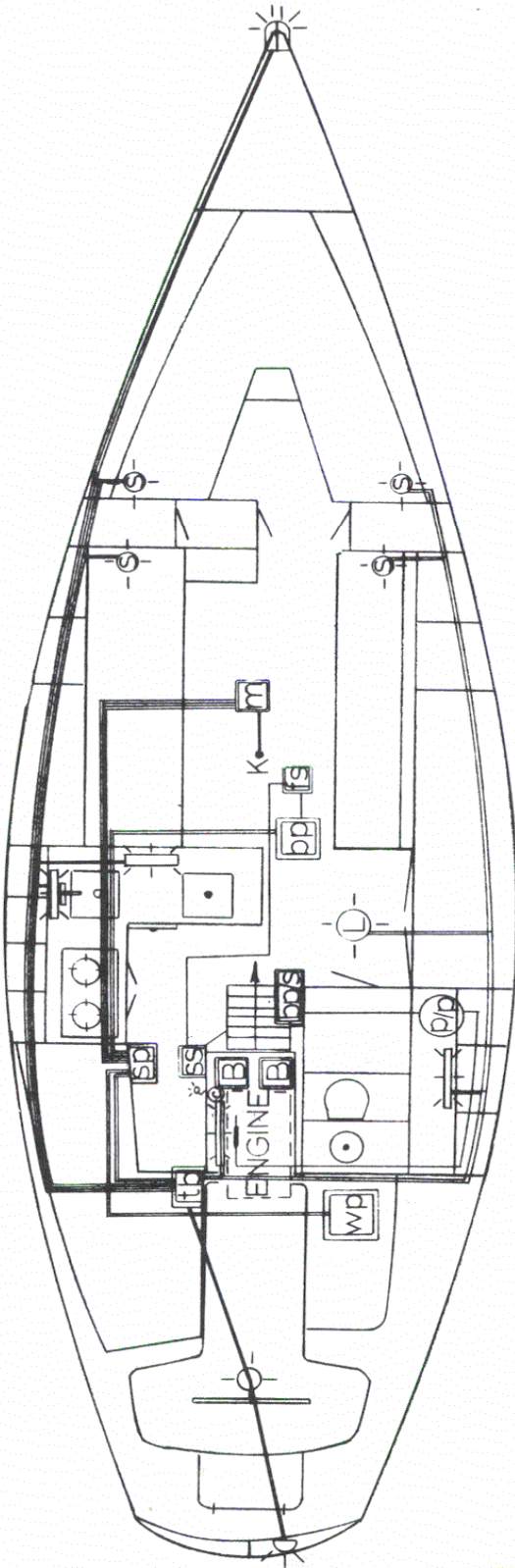
HEAD DETAIL
 ↳ 3/4" BLK. HOSE

SUBSYSTEMS:
 FRESH WATER
 WASTE DISPOSAL
 DRAINS

LEGEND:	HOSES & FITTINGS:
① WATER TANK	—•—•— 5/8" WH. HOSE (COLD WATER)
② WATER PUMP	—•••— 5/8" WH. HOSE (HOT WATER)
③ WATER HEATER	--- 3/4" SHIELDVAC (W/CUFFS)
④ SHOWER	--- 1-1/2" SHIELDVAC (W/CUFFS)
⑤ VANITY	--- 1-1/4" SHIELDFLEX (GREEN)
⑥ GALLEY	--- 1-1/2" SHIELDFLEX (GREEN)
⑦ ICEBOX	△ THRU HULL (PLASTIC)
⑧ BILGE PUMP (ELEC.)	▲ THRU HULL (BRONZE)
⑨ HEAD	○ DECK PLATE (WATER)
⑩ HOLDING BAG	⊗ DECK PLATE (WASTE)
⑪ WASTE PUMP (MANUAL)	⊠ SALT WATER PICKUP
⑫ 1-1/2" VENTED LOOP (BRONZE)	△ WATER & WASTE VENTS
⑬ BILGE PUMP/SHOWER	7 GATE VALVE

Hunter 33

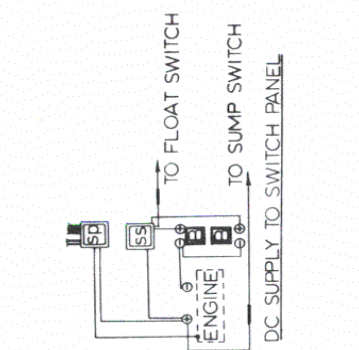
WIRING DIAGRAM (DC)



WIRING NOTES:

COLOR	GAUGE	APPLICATION
RED	4	BATTERY CABLE/SAFETY MAIN SW.
WHITE	8	MAST GROUND
RED	10	DC SUPPLY TO SWITCH PANEL
RED	12	WATER PUMP
BLUE	16	CABIN LIGHTS
WHITE	16	RUNNING LIGHTS (BOW)
"	"	" " (STERN/COMPASS)
GREEN	16	STEAMING LIGHTS
RED	16	ANCHOR LIGHT
BROWN	16	BILGE PUMP
TAN	16	BILGE FLOAT SWITCH

● ALL LEADS (EXCEPT FLOAT SWITCH AND MAST GROUND) ARE RUN WITH A BLACK GROUND OF EQUAL GAUGE. THESE ARE CONNECTED TO A COMMON GROUND AT THE SWITCH PANEL WHICH IS GROUNDED TO THE ENGINE WITH A 10 GAUGE BLACK WIRE.



LEGEND:

B	BATTERY (2-72 A.)	SL	SM. ROUND LIGHT
SP	SWITCH PANEL	LL	LG. ROUND LIGHT
SS	SAFETY MAIN SWITCH	LF	LG. FLOOR LIGHT
WP	WATER PUMP	SFL	SM. FLOOR LIGHT
BP	BILGE PUMP (750 GPH)	CL	CHART LIGHT
FS	BILGE FLOAT SWITCH	IF	IN-LINE FUSE
M	MAST	K	KEEL
SDS	BILGE PUMP/SHOWER (750 GPH)	FLCT	FLOOR LIGHT AT CHART TABLE IS RED.
PP	PUSH/PULL SWITCH	TB	TERMINAL BLOCK