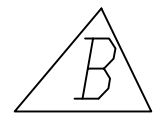
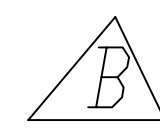
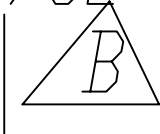
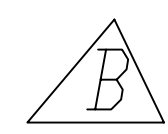
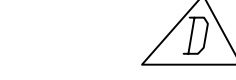


13/16" DIA HOLE FOR 3/4" HEX HD SS MS - 3" LNG



25/32" HOLE FOR 3/4" DIA PIN

3/4" SS NUT

WELD TO UNDERSIDE OF 1/2" PLATE

CENTERLINE OF ALIGNMENT PIN

CHAMFER EDGES 1/8"

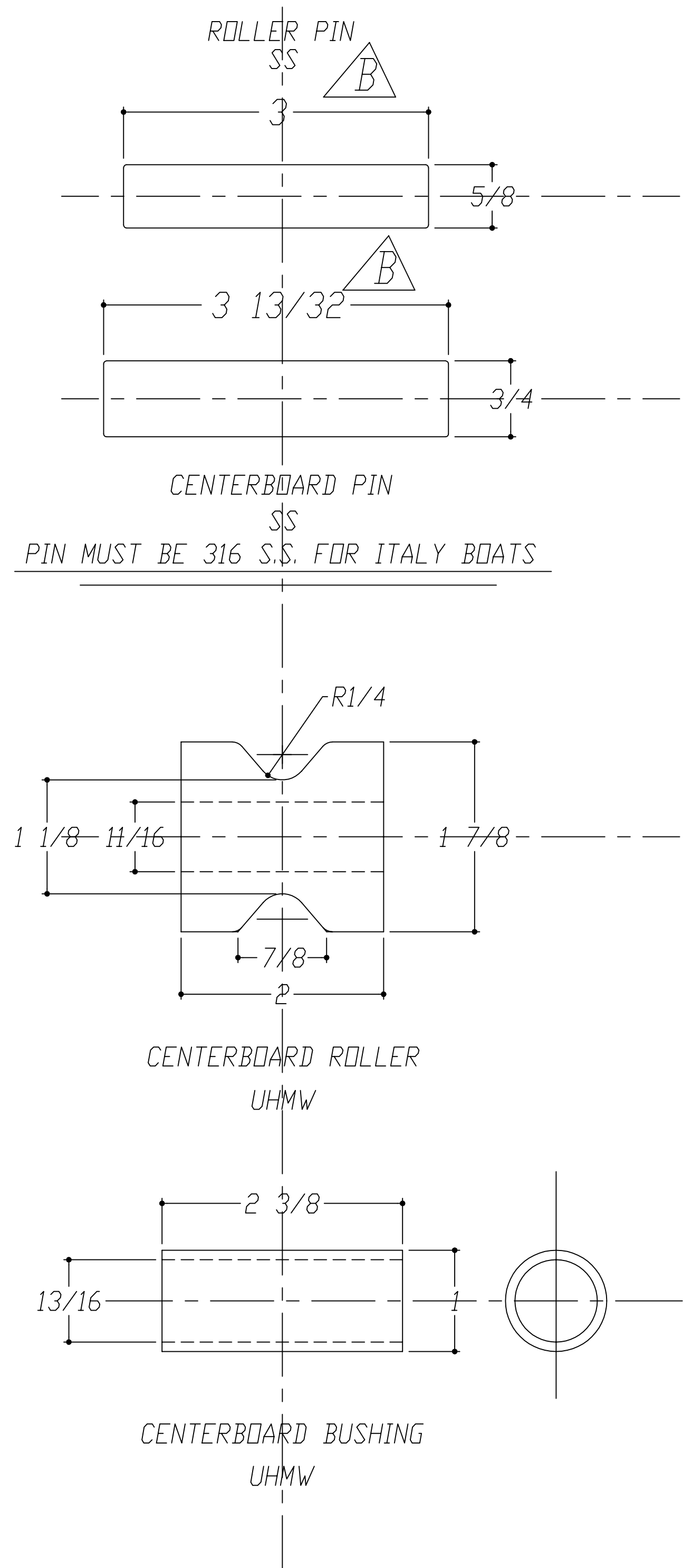
WELD CORNERS FULL LENGTH

21/32" HOLE FOR 5/8" DIA PIN

FABRICATE FROM 3/16" SS PLATE

CS FOR #10-24 FHMS (USE LOCTITE)
REVISION C
GRIND FLUSH FOR INSTALLATION
SCREWS TAPPED INTO SS

DRILL & CNSK FOR #10-24 SS FH MS - 3 REQD EACH SIDE



1/4" X 1-1/2" UHMW CHAFFE BLOCKS

REVISIONS		DO NOT SCALE		PROPRIETARY INFORMATION This document discloses information for which HUNTER MARINE CORP. has proprietary rights.	
REV	DATE	BY	DATE	HUNTER	
D	4/2/93	RLM	7/13/94	DRAWING TITLE	
C	7/17/94	RLM	7/17/94	H19, 23.5, 26 CENTERBOARD BRACKET	
B	6/21/94	RLM	6/21/94	PAPER SIZE	
A		RLM		D	
TOLERANCES UNLESS OTHERWISE SPECIFIED		DRAWN BY		DATE	
FRACTIONAL ± N/A		RLM		7/16/92	
3 PLACE DECIMAL ± N/A		SCALE		FULL SIZE	
4 PLACE DECIMAL ± N/A		HUNTER PART NO.		N/A	
ANGULAR ± N/A		DRAWING NO.		H26-D-1501	
FINISH REAL NECE		PLANT SCALE		1=1	