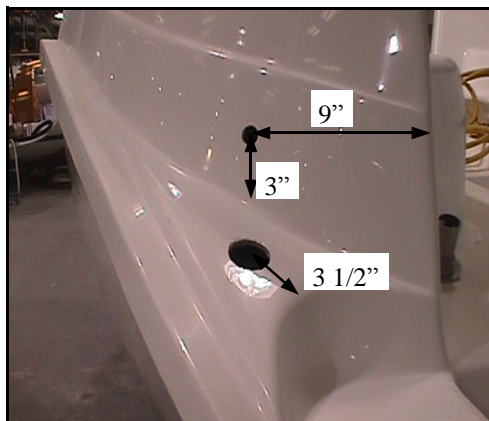


INSTALLATION OF OPTIONAL MARINE HEAD THRU-HULL, VENT, AND DECK PLATE



DRILLING HOLES FOR THE WASTE VENT AND WASTE DECK PLATE:

Drilling hole for the waste vent.

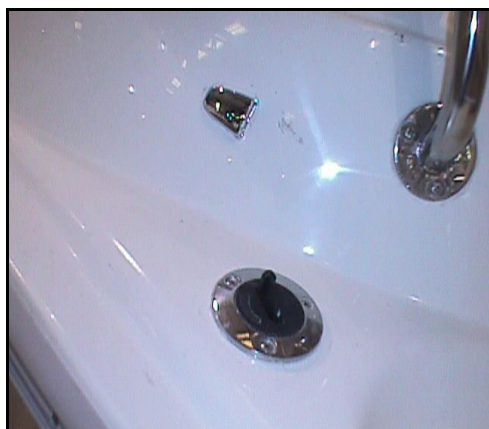
- Measure from the walk through outboard 9".
- Measure from the radius up 3".
- Drill hole using a 7/8" hole saw.

Drilling hole for the deck plate.

- Measure from the center of the radius step pad 3 1/2".
- Make sure it is centered in the middle of the platform.
- Drill hole using a 1 7/8" hole saw.

Installation of the vent and deck plate:

- Set deck plate in the 1 7/8" hole.
- Mark holes with a pencil.
- Pull plate back out.
- Drill holes using 5/32 drill bit.
- Apply 739 white caulk around the deck plate and the vent.
- Install the vent and tighten from the inside.
- Install the deck plate and secure using #10 x 3/4 oval head screws.

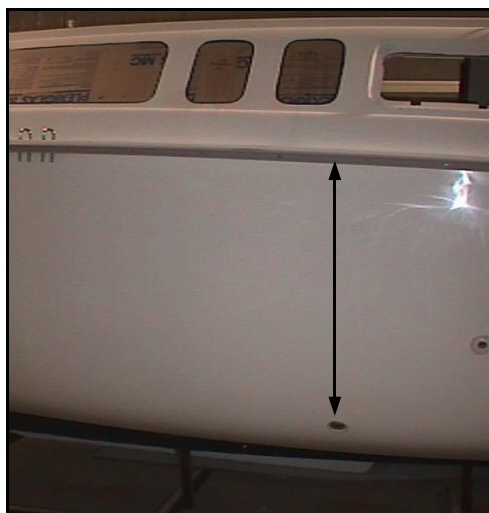


HARDWARE:

1 EA Deck plate (brown)#356217
1 EA Fuel vent (water) #353157

FASTENERS:

739 White Caulk
3 EA #10 x 3/4" O/H



INSTALLATION OF MARINE HEAD RAW WATER PICK UP.

- Locate the aft fixed window on the **port** side.
- Align with aft of the embossment.
- Measure from the bottom of the flange 39 1/2".
- Drill hole using a 1 3/8" hole saw.
- Apply 5200 marine adhesive caulk to the thru-hull.
- Install and secure thru-hull.

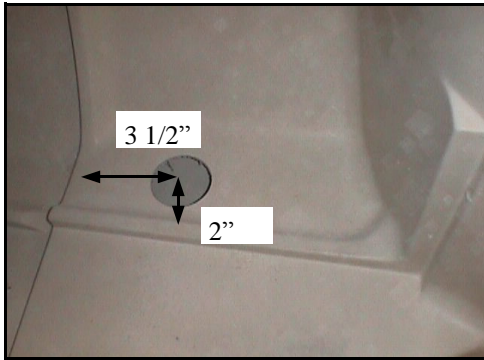
HARDWARE:

1 EA Brass Thru-hull 3/4 #352617

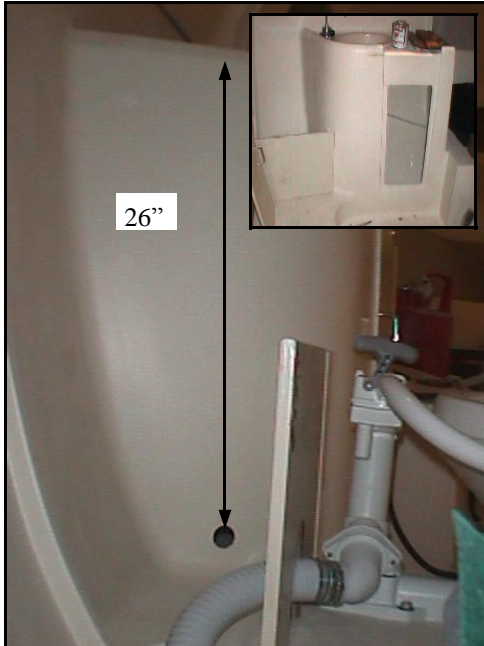
FASTENERS:

5200 Marine adhesive caulk

WASTE TANK AND HEAD OPTION


DRILLING HOLES IN PREPARATION FOR THE RAW HEAD DISCHARGE AND THE RAW WATER FEED FROM THE VANITY:

- Measure 3 1/2" from the aft edge, and mark with a pencil.
- Measure 2" from the inboard edge, and mark with a pencil.
- Drill hole using a 3" hole saw.



- Measure down 26" and center a mark.
- Drill hole using a 1 1/8" hole saw.


TRIMMING THE CHAFE GUARD AND INSTALL:

- Trim chafe guard as shown.



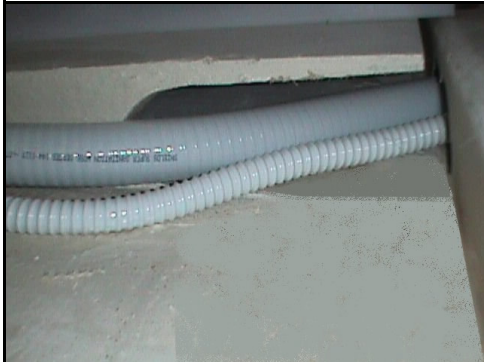
- Set chafe guard in 3" hole.
- Pre-drill 1/8" drill bit.
- Secure the chafe guard using #8 x 5/8" P/H

HARDWARE:

1 EA Chafe Guard, 3" #314440

FASTENERS:

2 EA #8 x 5/8 P/H

WASTE TANK AND HEAD OPTION**FEEDING WASTE DISCHARGE HOSE TO THE AFT END OF THE TANK PLATFORM:**

- Feed 1 1/2" waste hose through the 3" hole.
- Push it aft into the first bunk drop in.
- In the aft bunk feed it into the 2" PVC pipe on the outboard most side.
- Keep feeding the waste hose aft till it exits the pan.
- Feed under the platform for an excess of 3 feet.

**PLACEMENT OF HEAD:**

- Center head on platform.
- Mark holes with a pencil.
- Drill holes using a 1/4" drill bit.
- Apply 739 white caulk to the holes.
- Secure head to the platform using 5/16 lag bolts, 5/16 neo washers.

HARDWARE:

1 EA Toilet #29090 RH #350169

FASTENERS:

739 White Caulk
4 EA 5/16 x 2" Lag bolts
4 EA 5/16 Neo Washers

260
WASTE TANK AND HEAD OPTION

INSTALLATION OF MARINE HEAD:



- Loosen screws and rotate the discharge elbow as shown.



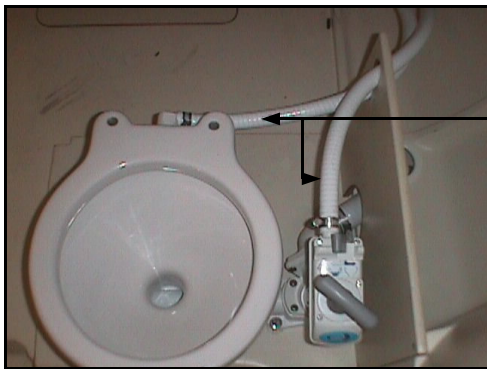
- Connect 1 1/2" discharge hose to the elbow using two #24 hose clamps.
- Disconnect and discard this hose, not used for anything.



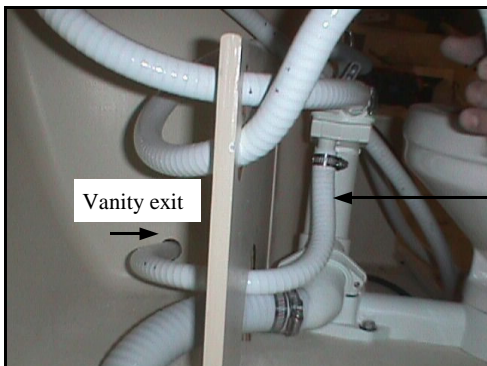
- Drill two 1 1/8" holes for vented loop hoses.

(NOTE: LEAVE ENOUGH ROOM FOR THE 3/4" RAW WATER PICK UP HOSE TO RUN THROUGH THE SAME HORSE SHOE CUT OUT.)

- Slide divider in position and mark where cut out will need to be.



- Connect the vented loop hoses to these two fittings on the head.
- Run these two hoses through the two 1 1/8" holes drilled in the divider board.



Vanity exit

- Run a 3/4" hose from the vanity cabinet through the divider board to the raw water feed on the marine head.

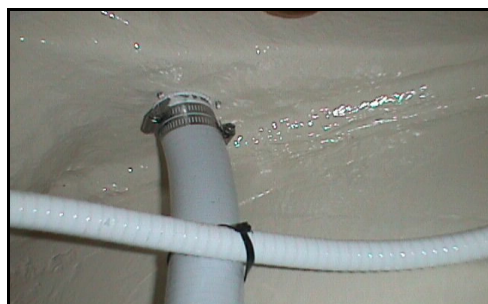
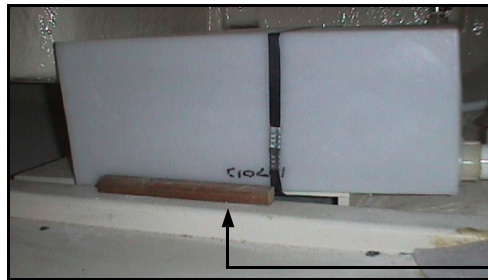
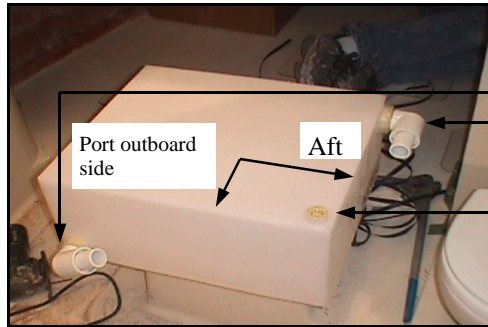
HARDWARE:

6 FT	Hose Santi 3/4"	#358035
6 FT	Hose Santi 3/4"	#358035
4 FT	Hose Santi 3/4"	#358035

FASTENERS:

3 EA	#10 Hose Clamps
2 EA	#24 Hose Clamps

WASTE TANK AND HEAD OPTION

**INSTALLATION OF WASTE TANK FITTINGS:**

- Install PVC elbow 90 degree 1 1/2" slip x MPT, using pipe sealant, for tank exit.
- Install PVC elbow 90 degree 1 1/2" slip x MPT, using pipe sealant, for tank in.
- Install adapters 1 1/2" x 1 1/2" using PVC Glue.
- Install 3/4" black hose barb using pipe sealant for the tank vent.

CONNECTION OF WASTE DISCHARGE HOSE INLET TO TANK:

- Connect 1 1/2" waste discharge hose from marine head to elbow fitting aft upper part of the tank. **(This needs to be secured before the tank can be secured)**

INSTALLATION OF THE TANK:

- Slide tank onto the platform.
- Wrap banding material around the tank twice.
- Space 18" from back to front.
- Tighten with banding tools.
- Clamp in two places on the strip joint.
- Place a batten on the forward end of tank, and secure using 2 #10x 1 1/4" F/H

CONNECTION OF WASTE PUMP OUT HOSE, AND TANK VENT HOSE:

- Connect the 6 FT x 1 1/2" hose to the lower elbow on the forward out board side of the tank using pipe sealant and 2 #24 hose clamps.

- Connect the 3/4" hose to the 3/4" black hose barb for the tank vent using #10 hose clamp and pipe sealant.

CONNECTION OF THE HOSES TO THE VENT AND DECK FILL PLATE:

- Connect the 3/4" hose the 3/4" hose barb on the chrome vent. (INSTALLED ON OPT PAGE 1)
- Connect the 1 1/2" hose to the deck fill plate using 2 #24 hose clamps and pipe sealant. (INSTALLED ON OPT PAGE 1)

HARDWARE:

1 EA	Tank holding 13ga #356492
2 EA	1 1/2"x1 1/2" adpt #341513
1 EA	Barb, hose 3/4" #355335
2 EA	Elbow PVC 1 1/2" #354867
6 FT	Hose Santi 1 1/2" #358413
6 FT	Hose Santi 3/4" #358035
11 FT	Hose Santi 1 1/2" #358413

FASTENERS:

6 EA	#24 Hose Clamps
2 EA	#10 Hose Clamps
2 EA	#10 x 1 1/4" F/H
4 EA	Banding buckles
12 FT	Banding Material
	Rector seal
	PVC Glue

260
WASTE TANK AND HEAD OPTION

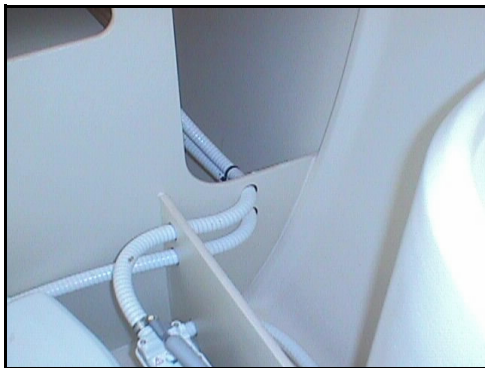


INSTALLATION OF THE BALL VALVE TO THE PICKUP THRU-HULL:

- Install a brass ball valve using rector seal on the thru-hull. (Previously installed on option page 1).
- Install a 90 degree street L onto the ball valve using rector seal.
- Install a Barb, Hose Brass 3/4" to the 90 degree elbow.
- Connect the 3/4" shield vac hose for the head pick up to the 3/4" hose brass barb using a #10 hose clamp and rector seal.

HARDWARE:	
1 EA	Ball Valve 3/4" # 353931
1 EA	Barb, brass 3/4" # 354057
1 EA	Elbow 90 Degree # 355803

FASTENERS:	
	Rector Seal
1 EA	#10 hose clamp



INSTALLATION OF THE VENTED LOOP:

- Drill two 1 1/8" holes through this bulkhead, keeping it level with the holes in the divider board.
- Feed hoses through the bulkhead to the hanging locker.
- Zip tie the hoses together after entering the hanging locker.

- Attach the hoses to the vented loop using #10 hose clamps and rector seal.
- Attach the vented loop to the inboard bulkhead in the hanging locker with #8 x 5/8" P/H.

HARDWARE:	
1 EA	Vented loop 3/4" # 352293

FASTENERS:	
	Rector Seal
2 EA	#10 hose clamp

